



SZABO SCANDIC

Part of Europa Biosite

Produktinformation



Forschungsprodukte & Biochemikalien



Zellkultur & Verbrauchsmaterial



Diagnostik & molekulare Diagnostik



Laborgeräte & Service

Weitere Information auf den folgenden Seiten!
See the following pages for more information!



Lieferung & Zahlungsart

siehe unsere [Liefer- und Versandbedingungen](#)

Zuschläge

- Mindermengenzuschlag
- Trockeneiszuschlag
- Gefahrgutzuschlag
- Expressversand

SZABO-SCANDIC HandelsgmbH

Quellenstraße 110, A-1100 Wien

T. +43(0)1 489 3961-0

F. +43(0)1 489 3961-7

mail@szabo-scandic.com

www.szabo-scandic.com

[linkedin.com/company/szaboscandic](https://www.linkedin.com/company/szaboscandic) 

TECHNICALLY *Speaking*

Place your order with CEDARLANE® or your local distributor.
Please contact CEDARLANE® for lot specific information.

PE Anti-Rat CD11a (LFA-1 α Chain) Monoclonal Antibody

CL017PE
CL017PE-4

LOT: 1751

DESCRIPTION:

LFA-1 (lymphocyte function associated molecule-1) is one of the leukocyte integrins. It is a heterodimer consisting of α and β subunits of 160-170 kDa and 95-100 kDa respectively.

LFA-1 promotes non-antigen dependent adhesion of T-cells to a variety of lymphoid cells that bear its complementary receptor I-CAM-1 (1). It has a broad distribution and is found on most common lymphocytes.

Cedarlane's CL017F is specific for the α subunit of LFA-1. It inhibits homeotypic aggregation of PHA blasts and blocks the binding of rat lymphocytes to purified rat ICAM-1 (1).

This product is suitable for use in flow cytometry.

PRESENTATION:

50 μ g (CL017PE) or 200 μ g (CL017PE-4) R-PE conjugated Ig buffered in PBS, 0.02% NaN₃ and EIA grade BSA as a stabilizing protein to bring total protein concentration to 4-5 mg/ml.

STORAGE/STABILITY:

Store at 4°C. **DO NOT FREEZE.** Avoid prolonged exposure to light

Continued Overleaf.....

For more information or to place an order please contact...

CEDARLANE®
LABORATORIES LIMITED



toll free: 1-800-268-5058
in North America

phone: (905) 878-8891 • fax: (905) 878-7800

5516 - 8th Line, R.R.#2, Hornby, Ontario, CANADA L0P 1E0

or visit our website for a list of our international distributors including contact information
website: www.cedarlanelabs.com • e-mail: info@cedarlanelabs.com

SPECIFICATIONS:

Clone: WT.1

Hybridoma Production:

Immunization: Immunogen: Rat Splenic PHA blasts
Donor: BALB/c Spleen

Fusion Partner: Mouse myeloma cell line PAI

Specificity: Rat CD11a (LFA-1 α chain)

Ig Class: Mouse IgG_{2a}

Format: PE conjugated Ig buffered in PBS, 0.2 % NaN₃ and EIA grade BSA as a stabilizing protein to bring total protein concentration to 4-5 mg/ml.

Antibody Concentration: 0.1 mg/ml.

FLOW CYTOMETRY ANALYSIS:

Method:

1. Prepare a cell suspension in media A. For cell preparations, deplete the red blood cell population with Lympholyte[®]-Rat cell separation medium (CL5040).
2. Wash 2 times.
3. Resuspend the cells to a concentration of 2×10^7 cells/ml in media A. Add 50 μ l of this suspension to each tube (each tube will then contain 1×10^6 cells, representing 1 test).
4. To each tube, add 0.5 μ g* of **CL017PE** per 10^6 cells.
5. Vortex the tubes to ensure thorough mixing of antibody and cells.
6. Incubate the tubes for 30 minutes at 4°C.
(It is recommended that the tubes are protected from light, since most fluorochromes are light sensitive.)
7. Wash 2 times at 4°C.
8. Resuspend the cell pellet in 50 μ l ice cold media B.
9. Transfer to suitable tubes for flow cytometric analysis containing 15 μ l of propidium iodide at 0.5 mg/ml in PBS. This stains dead cells by intercalating in DNA.

Media:

- A. Phosphate buffered saline (pH 7.2) + 5% normal serum of host species + sodium azide (100 μ l of 2M sodium azide in 100 mls).
- B. Phosphate buffered saline (pH 7.2) + 0.5 % bovine serum albumin + sodium azide (100 μ l of 2M sodium azide in 100 mls).

Continued Overleaf.....

Results:

Tissue Distribution by Flow Cytometric Analysis:

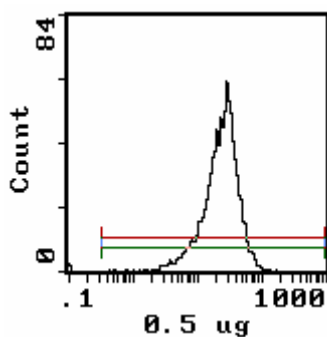
Rat Strain: Wister

Cell Concentration: 1×10^6 cells per test

Antibody Concentration Used: $0.5 \mu\text{g}/10^6$ cells

Isotypic Control: PE Mouse IgG_{2a} (CLCMG2A04)

<u>Cell Source</u>	<u>Percentage of cells stained above control:</u>
Thymus	99.5%
Spleen	96.8%
Bone Marrow	48.0%



Cell Source: Thymus
Percentage of cells stained above control: 99.5%

N.B.: Appropriate control samples should always be included in any labelling studies.

* For optimal results in various applications, it is recommended that each investigator determine dilutions appropriate for individual use.

REFERENCES:

1. Tamatani, T., M. Kiotani and M. Miyasaka. 1991 Molecular mechanisms underlying lymphocyte recirculation II. Differential regulation of LFA-1 in interaction between lymphocytes and high endothelial cells. Eur. J. Immunol., 21 855 - 858.

FOR RESEARCH USE ONLY

® is a registered trademark of Cedarlane Laboratories Ltd.