



SZABO SCANDIC

Part of Europa Biosite

Produktinformation



Forschungsprodukte & Biochemikalien



Zellkultur & Verbrauchsmaterial



Diagnostik & molekulare Diagnostik



Laborgeräte & Service

Weitere Information auf den folgenden Seiten!
See the following pages for more information!



Lieferung & Zahlungsart

siehe unsere [Liefer- und Versandbedingungen](#)

Zuschläge

- Mindermengenzuschlag
- Trockeneiszuschlag
- Gefahrgutzuschlag
- Expressversand

SZABO-SCANDIC HandelsgmbH

Quellenstraße 110, A-1100 Wien

T. +43(0)1 489 3961-0

F. +43(0)1 489 3961-7

mail@szabo-scandic.com

www.szabo-scandic.com

[linkedin.com/company/szaboscandic](https://www.linkedin.com/company/szaboscandic) 

Technically
Speaking

CEDARLANE[®]
www.cedarlanelabs.com



Conveniently Delivering You Today's Innovations
for the Science of Tomorrow™

Anti-Rat CD18 Monoclonal Antibody

Catalogue#	Format	Size	Concentration	Isotype Control
CL018AP	Purified	200 µg	1.0 mg/ml	CLCMG2A00
CL018B	Biotin	100 µg	0.1 mg/ml	CLCMG2A15
CL018F	FITC	100 µg	0.1 mg/ml	CLCMG2A01
CL018PE	PE	50 µg	0.1 mg/ml	CLCMG2A04

Isotype: Mouse IgG_{2a}

DESCRIPTION:

LFA-1 (lymphocyte function associated molecule-1) is one of the leukocyte integrins. It is a heterodimer consisting of α and β subunits of 160-170 kDa and 95-100 kDa respectively.

LFA-1 promotes non-antigen dependent adhesion of T-cells to a variety of lymphoid cells that bear its complementary receptor I-CAM-1 (1). It has a broad distribution and is found on most common lymphocytes.

Cedarlane's CL017AP is specific for the α subunit of LFA-1. It inhibits homeotypic aggregation of PHA blasts and blocks the binding of rat lymphocytes to purified rat ICAM-1 (1).

Applications include immunoprecipitation, flow cytometric analysis and immunohistochemistry.

PRESENTATION:

Purified: Purified IgG buffered in PBS and 0.02% NaN₃. (Purified from ascitic fluid via Protein G Chromatography). For maximum recovery of contents, spin down tube before use.

Biotin, FITC and PE: Biotin/FITC/PE conjugated IgG buffered in PBS, 0.02% NaN₃ and EIA grade BSA as a stabilizing protein to bring total protein concentration to 4-5 mg/ml.

STORAGE/STABILITY:

Store at 4°C. **Do Not Freeze PE Conjugates.** For long term storage aliquot and freeze unused portion at -20°C in volumes appropriate for single usage. Avoid repeated freeze/thaw cycles.

APPLICATION:

This antibody is suitable for use in Flow Cytometry, Immunohistochemistry (Frozen), Western Blot

Visit our website for your local distributor.

CEDARLANE[®]



www.cedarlanelabs.com

An ISO 9001:2000 and ISO 13485:2003
registered company.

In CANADA: Toll Free: 1-800-268-5058

4410 Paletta Court, Burlington, ON L7L 5R2 ph: (289) 288-0001, fax: (289) 288-0020
e-mail: general@cedarlanelabs.com

In the USA: Toll Free: 1-800-721-1644

1210 Turrentine Street, Burlington, NC 27215 ph: (336) 513-5135, fax: (336) 513-5138
e-mail: service@cedarlanelabs.com

SPECIFICATIONS:

Clone: WT.1

Hybridoma Production:

Immunization: Immunogen: Rat Splenic PHA blasts
Donor: BALB/c spleen

Fusion Partner: Mouse myeloma cell line PAI

Specificity: Rat CD11a (LFA-1 α chain)

TEST RESULTS:

Tissue Distribution by Flow Cytometric Analysis:

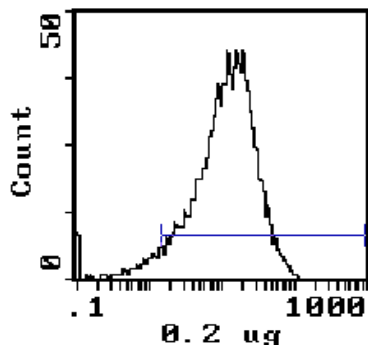
Rat Strain: Wistar

Cell Concentration: 1×10^6 cells per test

Antibody Concentration Used: $0.2 \mu\text{g}/10^6$ cells

Cell Source Percentage of cells stained above control:

Thymus	93.7%
Spleen	54.4%
Bone Marrow	23.4%



LFL1

N.B.: Appropriate control samples should always be included in any labeling studies.

*** For optimal results in various applications, it is recommended that each investigator determine dilutions appropriate for individual use.**

REFERENCES:

1. Tamatani, T., M. Kiotani and M. Miyasaka. 1991 Molecular mechanisms underlying lymphocyte recirculation II. Differential regulation of LFA-1 in interaction between lymphocytes and high endothelial cells. Eur. J. Immunol., 21 855 - 858.

® is a registered trademark of Cedarlane Laboratories Ltd.
FOR RESEARCH USE ONLY