



# SZABO SCANDIC

Part of Europa Biosite

## Produktinformation



Forschungsprodukte & Biochemikalien



Zellkultur & Verbrauchsmaterial



Diagnostik & molekulare Diagnostik



Laborgeräte & Service

Weitere Information auf den folgenden Seiten!  
See the following pages for more information!



### Lieferung & Zahlungsart

siehe unsere [Liefer- und Versandbedingungen](#)

### Zuschläge

- Mindermengenzuschlag
- Trockeneiszuschlag
- Gefahrgutzuschlag
- Expressversand

### SZABO-SCANDIC HandelsgmbH

Quellenstraße 110, A-1100 Wien

T. +43(0)1 489 3961-0

F. +43(0)1 489 3961-7

[mail@szabo-scandic.com](mailto:mail@szabo-scandic.com)

[www.szabo-scandic.com](http://www.szabo-scandic.com)

[linkedin.com/company/szaboscandic](https://www.linkedin.com/company/szaboscandic) 

Technically  
Speaking

**CEDARLANE**<sup>®</sup>  
[www.cedarlanelabs.com](http://www.cedarlanelabs.com)



Conveniently Delivering You Today's Innovations  
for the Science of Tomorrow™

### Anti-Rat CD18 Monoclonal Antibody

| Catalogue#     | Format   | Size   | Concentration | Isotype Control |
|----------------|----------|--------|---------------|-----------------|
| <b>CL018AP</b> | Purified | 200 µg | 1.0 mg/ml     | CLCMG2A00       |
| <b>CL018B</b>  | Biotin   | 100 µg | 0.1 mg/ml     | CLCMG2A15       |
| <b>CL018F</b>  | FITC     | 100 µg | 0.1 mg/ml     | CLCMG2A01       |
| <b>CL018PE</b> | PE       | 50 µg  | 0.1 mg/ml     | CLCMG2A04       |

Isotype: Mouse IgG<sub>2a</sub>

#### **DESCRIPTION:**

LFA-1 (lymphocyte function associated molecule-1) is one of the leukocyte integrins. It is a heterodimer consisting of  $\alpha$  and  $\beta$  subunits of 160-170 kDa and 95-100 kDa respectively.

LFA-1 promotes non-antigen dependent adhesion of T-cells to a variety of lymphoid cells that bear its complementary receptor I-CAM-1 (1). It has a broad distribution and is found on most common lymphocytes.

Cedarlane's CL017AP is specific for the  $\alpha$  subunit of LFA-1. It inhibits homeotypic aggregation of PHA blasts and blocks the binding of rat lymphocytes to purified rat ICAM-1 (1).

Applications include immunoprecipitation, flow cytometric analysis and immunohistochemistry.

#### **PRESENTATION:**

**Purified:** Purified IgG buffered in PBS and 0.02% NaN<sub>3</sub>. (Purified from ascitic fluid via Protein G Chromatography). For maximum recovery of contents, spin down tube before use.

**Biotin, FITC and PE:** Biotin/FITC/PE conjugated IgG buffered in PBS, 0.02% NaN<sub>3</sub> and EIA grade BSA as a stabilizing protein to bring total protein concentration to 4-5 mg/ml.

#### **STORAGE/STABILITY:**

Store at 4°C. **Do Not Freeze PE Conjugates.** For long term storage aliquot and freeze unused portion at -20°C in volumes appropriate for single usage. Avoid repeated freeze/thaw cycles.

#### **APPLICATION:**

This antibody is suitable for use in Flow Cytometry, Immunohistochemistry (Frozen), Western Blot

Visit our website for your local distributor.

**CEDARLANE**<sup>®</sup>



[www.cedarlanelabs.com](http://www.cedarlanelabs.com)

An ISO 9001:2000 and ISO 13485:2003  
registered company.

In CANADA: Toll Free: 1-800-268-5058

4410 Paletta Court, Burlington, ON L7L 5R2 ph: (289) 288-0001, fax: (289) 288-0020  
e-mail: [general@cedarlanelabs.com](mailto:general@cedarlanelabs.com)

In the USA: Toll Free: 1-800-721-1644

1210 Turrentine Street, Burlington, NC 27215 ph: (336) 513-5135, fax: (336) 513-5138  
e-mail: [service@cedarlanelabs.com](mailto:service@cedarlanelabs.com)

**SPECIFICATIONS:**

Clone: WT.1

Hybridoma Production:

Immunization: Immunogen: Rat Splenic PHA blasts  
Donor: BALB/c spleen

Fusion Partner: Mouse myeloma cell line PAI

Specificity: Rat CD11a (LFA-1  $\alpha$  chain )

**TEST RESULTS:**

Tissue Distribution by Flow Cytometric Analysis:

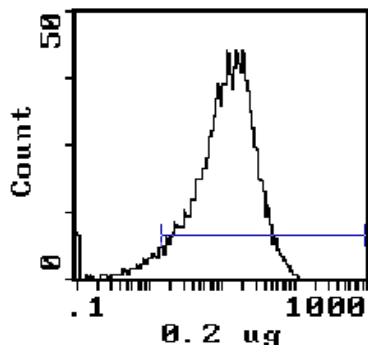
Rat Strain: Wistar

Cell Concentration:  $1 \times 10^6$  cells per test

Antibody Concentration Used:  $0.2 \mu\text{g}/10^6$  cells

Cell Source                      Percentage of cells stained above control:

|             |       |
|-------------|-------|
| Thymus      | 93.7% |
| Spleen      | 54.4% |
| Bone Marrow | 23.4% |



**LFL1**

**N.B.:** Appropriate control samples should always be included in any labeling studies.

**\* For optimal results in various applications, it is recommended that each investigator determine dilutions appropriate for individual use.**

**REFERENCES:**

1. Tamatani, T., M. Kiotani and M. Miyasaka. 1991 Molecular mechanisms underlying lymphocyte recirculation II. Differential regulation of LFA-1 in interaction between lymphocytes and high endothelial cells. Eur. J. Immunol., 21 855 - 858.

® is a registered trademark of Cedarlane Laboratories Ltd.  
**FOR RESEARCH USE ONLY**