



# SZABO SCANDIC

Part of Europa Biosite

## Produktinformation



Forschungsprodukte & Biochemikalien



Zellkultur & Verbrauchsmaterial



Diagnostik & molekulare Diagnostik



Laborgeräte & Service

Weitere Information auf den folgenden Seiten!  
See the following pages for more information!



### Lieferung & Zahlungsart

siehe unsere [Liefer- und Versandbedingungen](#)

### Zuschläge

- Mindermengenzuschlag
- Trockeneiszuschlag
- Gefahrgutzuschlag
- Expressversand

### SZABO-SCANDIC HandelsgmbH

Quellenstraße 110, A-1100 Wien

T. +43(0)1 489 3961-0

F. +43(0)1 489 3961-7

[mail@szabo-scandic.com](mailto:mail@szabo-scandic.com)

[www.szabo-scandic.com](http://www.szabo-scandic.com)

[linkedin.com/company/szaboscandic](https://www.linkedin.com/company/szaboscandic) 

Technically  
Speaking

**CEDARLANE**<sup>®</sup>  
[www.cedarlanelabs.com](http://www.cedarlanelabs.com)



Conveniently Delivering You Today's Innovations  
for the Science of Tomorrow™

### Anti-Rat Ig κ Chain Monoclonal Antibody

Catalogue#	Format	Size	Concentration	Isotype Control
CL019A	Ascites	0.5 ml	N/A	CLCMG2A00
CL019AP	Purified	250 µg	1.0 mg/ml	CLCMG2A00
CL019AP-2	Purified	500 µg	1.0 mg/ml	CLCMG2A00
CL019B	Biotin	100 µg	0.1 mg/ml	CLCMG2A15
CL019B-5	Biotin	500 µg	0.1 mg/ml	CLCMG2A15
CL019F	FITC	100 µg	0.1 mg/ml	CLCMG2A01
CL019F-5	FITC	500 µg	0.1 mg/ml	CLCMG2A01
CL019PE	PE	50 µg	0.1 mg/ml	CLCMG2A04

Isotype: Mouse IgG<sub>2a</sub>

#### **DESCRIPTION:**

Cedarlane's anti-rat Igκ chain monoclonal antibody recognizes a determinant on rat kappa chains and binds preferentially to the Ig-1b allotype. This antibody provides a suitable marker for virtually all immunoglobulin, regardless of class since 5% or less of rat light chains are lambda. CL019 detects surface immunoglobulin of rat peripheral blood B lymphocytes and has been used in indirect binding assays for detecting rat antibodies.

#### **PRESENTATION:**

**Purified:** Purified IgG buffered in PBS and 0.02% NaN<sub>3</sub>. (Purified from ascitic fluid via Protein G Chromatography). For maximum recovery of contents, spin down tube before use.

**Biotin, FITC and PE:** Biotin/FITC/PE conjugated IgG buffered in PBS, 0.02% NaN<sub>3</sub> and EIA grade BSA as a stabilizing protein to bring total protein concentration to 4-5 mg/ml.

#### **STORAGE/STABILITY:**

For all formats, store at 4°C. DO NOT FREEZE PE conjugates. For long term storage (**Purified, Biotin, FITC**), aliquot and freeze unused portion at -20°C in volumes appropriate for single usage. Avoid freeze/thaw cycles.

#### **APPLICATION:**

This antibody is suitable for use in Flow Cytometry.

Visit our website for your local distributor.

**CEDARLANE**<sup>®</sup>



[www.cedarlanelabs.com](http://www.cedarlanelabs.com)

An ISO 9001:2000 and ISO 13485:2003  
registered company.

In CANADA: Toll Free: 1-800-268-5058

4410 Paletta Court, Burlington, ON L7L 5R2 ph: (289) 288-0001, fax: (289) 288-0020  
e-mail: [general@cedarlanelabs.com](mailto:general@cedarlanelabs.com)

In the USA: Toll Free: 1-800-721-1644

1210 Turrentine Street, Burlington, NC 27215 ph: (336) 513-5135, fax: (336) 513-5138  
e-mail: [service@cedarlanelabs.com](mailto:service@cedarlanelabs.com)

**SPECIFICATIONS:**

Clone: MRC OX12

Hybridoma Production:

Immunization:

Immunogen: Pooled rat serum IgG

Donor: BALB/c spleen

Fusion Partner: P3-NSI-1Ag4 (NS1/1)

Specificity: Rat Kappa Chain

**TEST RESULTS:**

Tissue Distribution by Flow Cytometry Analysis:

Rat Strain: Buffalo

Cell Concentration:  $1 \times 10^6$  cells per tests

Antibody Concentration Used:  $0.05 \mu\text{g}/10^6$  cells

Cell Source

Thymus

Spleen

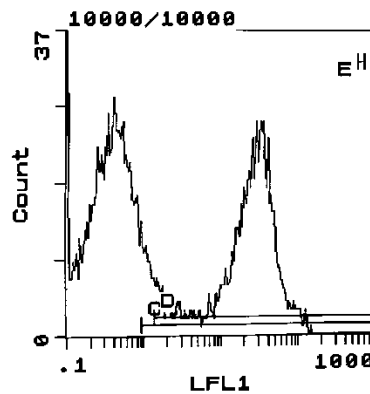
Lymph Node

Percentage of cells stained above control:

1.3%

40.4%

24.3%



Cell Source: Spleen

Percentage of cells stained above control: 40.4%

**N.B. Appropriate control samples should always be included in any labeling studies.**

**\* For optimal results in various applications, it is recommended that each investigator determine dilutions appropriate for individual use.**

**REFERENCES:**

- 1) Hunt, S.B., and M. Fowler. (1981) Cell Tissue Kinet, 14, 445-464. A Repopulation Assay for B and T Lymphocyte Stem Cells employing Radiation Chimaeras.
- 2) Gassar, D.D. (1977) Adv. Immunology 25, 96. Current Status of Rat Immunogenetics.
- 3) Barclay, A.N. *et. al.* (1981) Immunology 42, 593-600

**FOR RESEARCH USE ONLY**

® is a registered trademark of Cedarlane