



SZABO SCANDIC

Part of Europa Biosite

Produktinformation



Forschungsprodukte & Biochemikalien



Zellkultur & Verbrauchsmaterial



Diagnostik & molekulare Diagnostik



Laborgeräte & Service

Weitere Information auf den folgenden Seiten!
See the following pages for more information!



Lieferung & Zahlungsart

siehe unsere [Liefer- und Versandbedingungen](#)

Zuschläge

- Mindermengenzuschlag
- Trockeneiszuschlag
- Gefahrgutzuschlag
- Expressversand

SZABO-SCANDIC HandelsgmbH

Quellenstraße 110, A-1100 Wien

T. +43(0)1 489 3961-0

F. +43(0)1 489 3961-7

mail@szabo-scandic.com

www.szabo-scandic.com

[linkedin.com/company/szaboscandic](https://www.linkedin.com/company/szaboscandic) 

Technically
Speaking

CEDARLANE[®] 
www.cedarlanelabs.com

Conveniently Delivering You Today's Innovations
for the Science of Tomorrow™

**Anti-Rat CD28
Monoclonal Antibody**

Catalogue#	Format	Size	Concentration	Isotype Control
CL028AP/-2	Purified	250µg/500µg	1.0 mg/ml	CLCMG100
CL028B/-5	Biotin	100µg/500µg	0.1 mg/ml	CLCMG115
CL028F/-5	FITC	100µg/500µg	0.1 mg/ml	CLCMG101

Isotype: Mouse IgG₁

DESCRIPTION:

Cedarlane's anti-rat CD28 monoclonal antibody recognizes a 90kDa homodimeric cell surface glycoprotein. CD28 has been found to be a potent costimulatory receptor on T cells. It is expressed on all peripheral rat $\alpha\beta$ and most $\gamma\delta$ T cells, as well as on approximately half of all NK cells.

This clone can costimulate T cell proliferation and IL-2 secretion by resting rat T cells.

PRESENTATION:

Purified: Purified IgG buffered in PBS and 0.02% NaN₃. (Purified from ascitic fluid via Protein G Chromatography). For maximum recovery of contents, spin down tube before use.

Biotin, FITC and PE: Biotin/FITC/PE conjugated IgG buffered in PBS, 0.02% NaN₃ and EIA grade BSA as a stabilizing protein to bring total protein concentration to 4-5 mg/ml.

STORAGE/STABILITY:

For all formats, store at 4°C. DO NOT FREEZ **PE** conjugates. For long term storage (**Purified, Biotin** and **FITC**), aliquot and freeze unused portion at -20°C in volumes appropriate for single usage. Avoid freeze/thaw cycles.

SPECIFICATIONS:

Clone: JJ319

Hybridoma Production:

Immunization: Immunogen: Rat CD28 transfected A20J cells.
Donor: BALB/c spleen

Fusion Partner: X63-Ag8.653

Specificity: Rat CD28

Visit our website for your local distributor.

CEDARLANE[®] 

www.cedarlanelabs.com

An ISO 9001:2000 and ISO 13485:2003
registered company.

In CANADA: Toll Free: 1-800-268-5058

4410 Paletta Court, Burlington, ON L7L 5R2 ph: (289) 288-0001, fax: (289) 288-0020
e-mail: general@cedarlanelabs.com

In the USA: Toll Free: 1-800-721-1644

1210 Turrentine Street, Burlington, NC 27215 ph: (336) 513-5135, fax: (336) 513-5138
e-mail: service@cedarlanelabs.com

TEST RESULTS:

Tissue Distribution by Flow Cytometry Analysis:

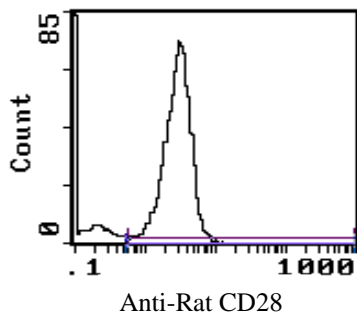
Rat Strain: Fischer

Cell Concentration: 1×10^6 cells per test

Antibody Concentration Used: $1.0 \mu\text{g}/10^6$ cells

<u>Cell Source</u>	<u>Percentage of cells stained above control:</u>
Thymus	36.3%
Splenic T Cells*	79.7 %

*(T cells isolated with CL102 - Cedarlane's Rat T Cell Recovery Column Kit)



Cell Source: Splenic T cells

N.B. Appropriate control samples should always be included in any labeling studies.

*** For optimal results in various applications, it is recommended that each investigator determine dilutions appropriate for individual use.**

REFERENCES:

1. Tacke, M., Georgina J. Clark, Margaret J. Dallman and Thomas Hünig. (1995). Cellular Distribution and Costimulatory Function of Rat CD28. J. Immunol. 154:5121-5127.

FOR RESEARCH USE ONLY
® is a Registered Trademark of Cedarlane