



# SZABO SCANDIC

Part of Europa Biosite

## Produktinformation



Forschungsprodukte & Biochemikalien



Zellkultur & Verbrauchsmaterial



Diagnostik & molekulare Diagnostik



Laborgeräte & Service

Weitere Information auf den folgenden Seiten!  
See the following pages for more information!



### Lieferung & Zahlungsart

siehe unsere [Liefer- und Versandbedingungen](#)

### Zuschläge

- Mindermengenzuschlag
- Trockeneiszuschlag
- Gefahrgutzuschlag
- Expressversand

### SZABO-SCANDIC HandelsgmbH

Quellenstraße 110, A-1100 Wien

T. +43(0)1 489 3961-0

F. +43(0)1 489 3961-7

[mail@szabo-scandic.com](mailto:mail@szabo-scandic.com)

[www.szabo-scandic.com](http://www.szabo-scandic.com)

[linkedin.com/company/szaboscandic](https://www.linkedin.com/company/szaboscandic) 

Technically  
Speaking

**CEDARLANE**<sup>®</sup>   
[www.cedarlanelabs.com](http://www.cedarlanelabs.com)

Conveniently Delivering You Today's Innovations  
for the Science of Tomorrow™

### Anti-Rat C3a Receptor Monoclonal Antibody

Catalogue#	Format	Size	Concentration	Isotype Control
<b>CL031AP</b>	Purified	250 µg	1.0 mg/ml	CLCMG100
<b>CL031B</b>	Biotin	100 µg	0.1 mg/ml	CLCMG115
<b>CL031F</b>	FITC	100 µg	0.1 mg/ml	CLCMG101
<b>CL031PE</b>	PE	50 µg	0.1 mg/ml	CLCMG104

Isotype: Mouse IgG<sub>1</sub>

#### **DESCRIPTION:**

C3aR binds to anaphylotoxin C3a which, among other things, is involved in mast cell degranulation and recruitment of immune cells to the site of inflammation. Activation of the complement cascade produces various fragments, including C3a and C5a.

C3aR is characterized by seven transmembrane domains including a large extracellular loop which is coupled to a Gi protein. C3aR expression is detected on glial cells, neurons and cells belonging to the mononuclear phagocyte system. C3aR expression was shown to moderately increase after LPS stimulation.

Cedarlane's rat C3a receptor antibody detects a recombinant peptide corresponding to amino acids 161-321 of the large extracellular loop structure, which shares 34% homology with mouse and human. Deduced amino acid sequences of human/rat C3aR is 58.5% and 90.7% with rat/mouse.

This clone is suitable for use in flow cytometry and in IHC with frozen tissue sections.

#### **PRESENTATION:**

**Purified:** Purified IgG buffered in PBS and 0.02% NaN<sub>3</sub>. (Purified from ascitic fluid via Protein G Chromatography).

**Biotin, FITC and PE:** Biotin/FITC/PE conjugated IgG buffered in PBS, 0.02% NaN<sub>3</sub> and EIA grade BSA as a stabilizing protein to bring total protein concentration to 4-5 mg/mL.

#### **STORAGE/STABILITY:**

For all formats, store at 4°C. DO NOT FREEZE PE conjugates. For long term storage (**Purified, Biotin, FITC**), aliquot and freeze unused portion at -20°C in volumes appropriate for single usage. Avoid freeze/thaw cycles.

*Continued...*

Visit our website for your local distributor.

**CEDARLANE**<sup>®</sup> 

[www.cedarlanelabs.com](http://www.cedarlanelabs.com)

An ISO 9001:2015 and ISO 13485:2016  
registered company.

In CANADA: Toll Free: 1-800-268-5058

4410 Paletta Court, Burlington, ON L7L 5R2 ph: (289) 288-0001, fax: (289) 288-0020  
e-mail: [general@cedarlanelabs.com](mailto:general@cedarlanelabs.com)

In the USA: Toll Free: 1-800-721-1644

1210 Turrentine Street, Burlington, NC 27215 ph: (336) 513-5135, fax: (336) 513-5138  
e-mail: [service@cedarlanelabs.com](mailto:service@cedarlanelabs.com)

**SPECIFICATIONS:**

Clone: 74 (formerly rC3aRZ1)

Hybridoma Production:

Immunization: Immunogen: RBL-2H3 transfectants expressing rat C3aR  
Donor: BALB/c

Fusion Partner: X63-Ag8.653

Specificity: Rat C3aR

**TEST RESULTS:**

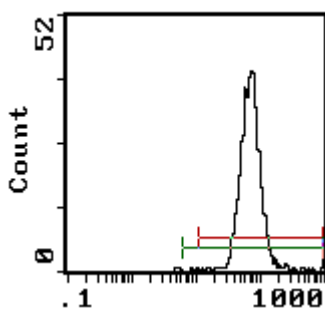
Tissue Distribution by Flow Cytometry Analysis:

Rat Strain: Fischer

Cell Concentration: 1x10<sup>6</sup> cells per tests

Antibody Concentration Used: 2.0 µg/10<sup>6</sup> cells

<u>Cell Source</u>	<u>Percentage of cells stained above control:</u>
Peritoneal Macrophages	97.2%
Bone Marrow	81.5%



Cell Source: Peritoneal Macrophages  
Percentage of cells stained above control: 97.2%

**N.B. Appropriate control samples should always be included in any labeling studies.**

**\* For optimal results in various applications, it is recommended that each investigator determine dilutions appropriate for individual use.**

**REFERENCES:**

- 1) Luhmann, A.E. et al. Immunohistochemical analysis of human and rat C3a receptor expression by the use of monoclonal antibodies. Molecular Immunology (Abstracts), 2001., 38:108.
- 2) Fukuoka, Y., et al. Cloning and characterization of rat C3a receptor: differential expression of rat C3a and C5a receptors by LPS stimulation. Biochem. And Biophys. Res. Comm. 1998, 242: 663.
- 3) Francis, K., et al. Complement C3a receptors in the pituitary gland: a novel pathway by which an innate immune molecule releases hormones involved in the control of inflammation. The FASEB journal. 2003, 17: 2266.
- 4) Benard, M., et al. Characterization of C3a and C5a receptors in rat cerebellar granule neurons during maturation. J. Biol. Chem. 2004, 279 (42): 43487.

**FOR RESEARCH USE ONLY**  
® is a registered trademark of Cedarlane