



SZABO SCANDIC

Part of Europa Biosite

Produktinformation



Forschungsprodukte & Biochemikalien



Zellkultur & Verbrauchsmaterial



Diagnostik & molekulare Diagnostik



Laborgeräte & Service

Weitere Information auf den folgenden Seiten!
See the following pages for more information!



Lieferung & Zahlungsart

siehe unsere [Liefer- und Versandbedingungen](#)

Zuschläge

- Mindermengenzuschlag
- Trockeneiszuschlag
- Gefahrgutzuschlag
- Expressversand

SZABO-SCANDIC HandelsgmbH

Quellenstraße 110, A-1100 Wien

T. +43(0)1 489 3961-0

F. +43(0)1 489 3961-7

mail@szabo-scandic.com

www.szabo-scandic.com

[linkedin.com/company/szaboscandic](https://www.linkedin.com/company/szaboscandic) 

Technically
Speaking

CEDARLANE[®]
www.cedarlanelabs.com



Conveniently Delivering You Today's Innovations
for the Science of Tomorrow™

**Anti-Rat CD45RA/B
Monoclonal Antibody**

Catalogue#	Format	Size	Concentration	Isotype Control
CL033AP	Purified	250µg	1.0 mg/ml	CLCMG115
CL033AP-S	Purified	50µg	1.0 mg/ml	CLCMG115
CL033AP-2	Purified	500µg	1.0 mg/ml	CLCMG115
CL033B	Biotin	100µg	0.1 mg/ml	CLCMG115
CL033B-5	Biotin	500µg	0.1 mg/ml	CLCMG115
CL033F	FITC	100µg	0.1 mg/ml	CLCMG115
CL033F-5	FITC	500µg	0.1 mg/ml	CLCMG115
CL033PE	PE	50µg	0.1 mg/ml	CLCMG115
CL033PE-4	PE	200µg	0.1 mg/ml	CLCMG115
CL033AF4	Alexa Fluor [®] 488	100 µg	0.1 mg/ml	N/A

Alexa Fluor[®] is a registered trademark of Life Technologies Corporation.

Isotype: Mouse IgG₁

DESCRIPTION:

The rat CD45 antigen (Leukocyte Common Antigen (L-CA)) has been shown to exist in different forms on different lymphoid cell types. CD45 on thymocytes shows one main band at 180 kDa, T cells show 4 bands at 180, 190, 200 and 220 kDa. CL033 detects a subfraction of the 240 kDa rat CD45 band found only on B lymphocytes. This monoclonal antibody is of particular use in the investigation of the molecular and antigenic heterogeneity of rat L-CA, especially when used in conjunction with other OX antibodies.

Four mouse monoclonal antibodies (MRC OX 1, 28, 29 and 30) react with all molecular forms of L-CA and fall into two sets that are non-competitive in binding to L-CA (MRC OX 1, 28, 29 and 30). The antigenic determinants seen by all these antibodies are lost when L-CA is reduced and alkylated. Three antibodies (MRC OX 22, 31, and 32) react selectively with B cells, T cytotoxic cells and about two thirds of T helper cells. OX 22 and OX 31 compete for binding but are non-competitive with OX 32. All of these antibodies bind to a sub-fraction of the 190, 200 and 220 kDa forms of T cell L-CA but not at all to the 180 kDa form of T cells or thymocytes.

This clone works in flow cytometry and with frozen and paraffin sections (2,3).

PRESENTATION:

Purified: Purified IgG buffered in PBS and 0.02% NaN₃. (Purified from ascitic fluid via Protein G Chromatography). For maximum recovery of contents, spin down tube before use.

Biotin, FITC, PE and AF488: Biotin/FITC/PE/AF488 conjugated IgG buffered in PBS, 0.02% NaN₃ and EIA grade BSA as a stabilizing protein to bring total protein concentration to 4-5 mg/ml.

Visit our website for your local distributor.

CEDARLANE[®]



www.cedarlanelabs.com

An ISO 9001:2000 and ISO 13485:2003
registered company.

In CANADA: Toll Free: 1-800-268-5058

4410 Paletta Court, Burlington, ON L7L 5R2 ph: (289) 288-0001, fax: (289) 288-0020
e-mail: general@cedarlanelabs.com

In the USA: Toll Free: 1-800-721-1644

1210 Turrentine Street, Burlington, NC 27215 ph: (336) 513-5135, fax: (336) 513-5138
e-mail: service@cedarlanelabs.com

STORAGE/STABILITY:

Stable at +4°C. DO NOT FREEZE PE and AF488 conjugates. For long term storage (Purified, Biotin, FITC), aliquot and freeze unused portions at -20°C in volumes appropriate for single usage. Avoid repeated freeze/thaw cycles.

SPECIFICATIONS:

Clone: OX-33

Hybridoma Production:

Immunization: Immunogen: Rat purified spleen L-CA

Donor: BALB/c spleen

Fusion Partner: NSO/U

Specificity: Rat CD45RA/B

Strains Tested: Wistar, Brown Norway, Buffalo, Fischer 344

Positive: Wistar, Buffalo, Brown Norway, Fischer 344

TEST RESULTS:

Tissue Distribution by Flow Cytometry Analysis:

Mouse Strain: Wistar

Cell Concentration: 1x10⁶ cells per test

Antibody Concentration Used: 0.5 µg/10⁶ cells

Cell Source

Spleen

Thymus

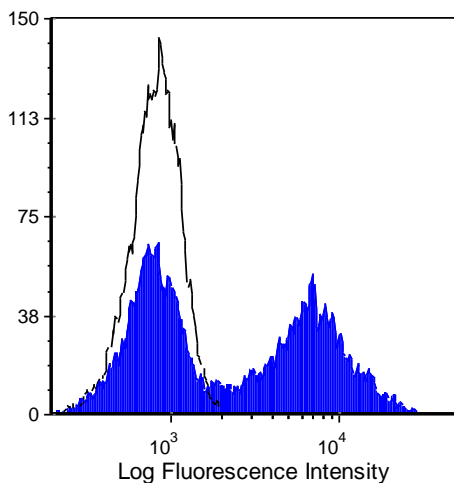
Lymph Node

Percentage of cells stained above control:

29.2%

2.1%

4.61%



Wistar rat splenocytes stained with anti-CD45RA/B (clone: OX-33) (filled histogram) or mouse IgG1, isotype control (open histogram).

06/07/2018

N.B. Appropriate control samples should always be included in any labelling studies.

*** For optimal results in various applications, it is recommended that each investigator determine dilutions appropriate for individual use.**

REFERENCES:

1. Woollett, G.R., Barclay, A.N. Paklavec, M., and A.G. Williams (1985). Molecular and antigenic heterogeneity of the rat leukocyte-common antigen from thymocytes and T and B lymphocytes. Eur. J. Immunol. 15: 168-173.
2. Whiteland, J.L et al (1995). Immunohistochemical detection of T cell subsets and other leukocytes in paraffin embedded rat and mouse tissues with monoclonal antibodies .J. Histochem. Cytochem. 43: 313-320.
3. Meltzer JC, et al. (2003) Contribution of the adrenal glands and splenic nerve to LPS-induced splenic cytokine production in the rat. Brain Behav Immun. 17(6):482-97.

FOR RESEARCH USE ONLY

® is a Registered Trademark of Cedarlane