



SZABO SCANDIC

Part of Europa Biosite

Produktinformation



Forschungsprodukte & Biochemikalien



Zellkultur & Verbrauchsmaterial



Diagnostik & molekulare Diagnostik



Laborgeräte & Service

Weitere Information auf den folgenden Seiten!
See the following pages for more information!



Lieferung & Zahlungsart

siehe unsere [Liefer- und Versandbedingungen](#)

Zuschläge

- Mindermengenzuschlag
- Trockeneiszuschlag
- Gefahrgutzuschlag
- Expressversand

SZABO-SCANDIC HandelsgmbH

Quellenstraße 110, A-1100 Wien

T. +43(0)1 489 3961-0

F. +43(0)1 489 3961-7

mail@szabo-scandic.com

www.szabo-scandic.com

[linkedin.com/company/szaboscandic](https://www.linkedin.com/company/szaboscandic) 

Technically
Speaking

CEDARLANE[®]
www.cedarlanelabs.com



Conveniently Delivering You Today's Innovations
for the Science of Tomorrow™

**Anti-Rat CD2 (LFA-2)
Monoclonal Antibody**

| Catalogue# | Format | Size | Concentration | Isotype Control |
|------------|------------------------------|--------|---------------|-----------------|
| CL034A | Ascites | 0.5 ml | N/A | CLCMG2A00 |
| CL034AP | Purified | 250 µg | 1.0 mg/ml | CLCMG2A00 |
| CL034AP-2 | Purified | 500 µg | 1.0 mg/ml | CLCMG2A00 |
| CL034LE | Low Endotoxin | 500 µg | 1.0 mg/ml | CLCMG2A00 |
| CL034B | Biotin | 100 µg | 0.1 mg/ml | CLCMG2A15 |
| CL034B-5 | Biotin | 500 µg | 0.1 mg/ml | CLCMG2A15 |
| CL034F | FITC | 100 µg | 0.1 mg/ml | CLCMG2A01 |
| CL034F-5 | FITC | 500 µg | 0.1 mg/ml | CLCMG2A01 |
| CL034NA | Purified/No Azide | 1 mg | 1.0 mg/ml | CLCMG2A00 |
| CL034PE | PE | 50 µg | 0.1 mg/ml | CLCMG2A04 |
| CL034PE-4 | PE | 200 µg | 0.1 mg/ml | CLCMG2A04 |
| CL034AF4 | Alexa Fluor [®] 488 | 100 µg | 0.1 mg/ml | N/A |

Alexa Fluor[®] is a registered trademark of Life Technologies Corporation.

Isotype: Mouse IgG_{2a}

DESCRIPTION:

Cedarlane's biotin anti-rat CD2 (LFA-2) monoclonal antibody reacts with the 50 kDa surface glycoprotein LFA-2, designated as CD2. LFA-2 is the receptor for LFA-3. This antibody labels all peripheral T cells and most thymocytes but does not label B cells or peritoneal macrophages. It does not activate T cells (1,2,3).

This clone is reported to work with frozen and paraffin sections (4).

PRESENTATION:

Purified: Purified IgG buffered in PBS and 0.02% NaN₃. (Purified from ascitic fluid via Protein G Chromatography).

LE: Purified Ig buffered in PBS, no preservative, 0.2µm sterile filtered. (Purified from cell culture supernatant via Protein G Chromatography)

Biotin, FITC, PE and AF488: Biotin/FITC/PE/AF488 conjugated IgG buffered in PBS, 0.02% NaN₃ and EIA grade BSA as a stabilizing protein to bring total protein concentration to 4-5 mg/mL.

No Azide: Purified Ig buffered in PBS, no preservative, 0.2µm sterile filtered.

Visit our website for your local distributor.

CEDARLANE[®]



www.cedarlanelabs.com

An ISO 9001:2000 and ISO 13485:2003
registered company.

In CANADA: Toll Free: 1-800-268-5058

4410 Paletta Court, Burlington, ON L7L 5R2 ph: (289) 288-0001, fax: (289) 288-0020
e-mail: general@cedarlanelabs.com

In the USA: Toll Free: 1-800-721-1644

1210 Turrentine Street, Burlington, NC 27215 ph: (336) 513-5135, fax: (336) 513-5138
e-mail: service@cedarlanelabs.com

STORAGE/STABILITY:

For all formats, store at 4°C. DO NOT FREEZE **PE and AF488** conjugates. For long term storage (**Purified, LE, Biotin, FITC, No Azide**), aliquot and freeze unused portion at -20°C in volumes appropriate for single usage. Avoid freeze/thaw cycles.

SPECIFICATIONS:

Clone: MRC OX-34

Hybridoma Production:

Immunization:

Immunogen: T Blasts prepared in mixed lymphocyte reactions with rat T helper cells against irradiated spleen.

Donor: BALB/c spleen

Fusion Partner: NSO/1

Specificity: Rat CD2 (LFA-2)

TEST RESULTS:

Tissue Distribution by Flow Cytometry Analysis:

Rat Strain: Wistar

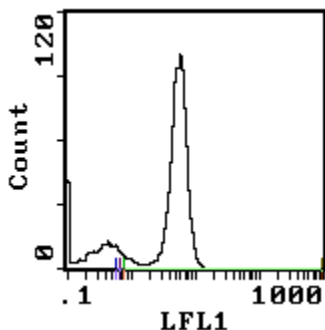
Cell Concentration: 1x10⁶ cells per tests

Antibody Concentration Used: 0.1 µg/10⁶ cells

Cell Source

Percentage of cells stained above control:

| | |
|------------|-------|
| Thymus | 97.2% |
| Spleen | 30.4% |
| Lymph Node | 79.3% |



Cell Source: Lymph Node

N.B. Appropriate control samples should always be included in any labeling studies.

*** For optimal results in various applications, it is recommended that each investigator determine dilutions appropriate for individual use.**

REFERENCES:

- 1) Jeffries, W.A., Green, J.R. and A.F. Williams. 1985. Authentic T Helper CD4 (W3/25) antigen on rat peritoneal macrophages. J. Exp. Med. 162, 117-127.
- 2) Beyers, A.D., A.N. Barclay, D.A. Lae, et al. 1989. Activation of T-lymphocytes via monoclonal antibodies against rat cell surface antigens with particular reference to CD2 antigen. Immunol.Rev. 111: 59-77.
- 3) Clark, S.J., D.A. Law, D.J. Paterson, et al. 1988. Activation of rat T lymphocytes by anti-CD2 monoclonal antibodies. J. Exp. Med. 167: 1861-1872.
- 4) Whiteland, J.L et al (1995). Immunohistochemical detection of T cell subsets and other leukocytes in paraffin embedded rat and mouse tissues with monoclonal antibodies .J. Histochem. Cytochem. 43: 313-320.

FOR RESEARCH USE ONLY
® is a registered trademark of Cedarlane