



# SZABO SCANDIC

Part of Europa Biosite

## Produktinformation



Forschungsprodukte & Biochemikalien



Zellkultur & Verbrauchsmaterial



Diagnostik & molekulare Diagnostik



Laborgeräte & Service

Weitere Information auf den folgenden Seiten!  
See the following pages for more information!



### Lieferung & Zahlungsart

siehe unsere [Liefer- und Versandbedingungen](#)

### Zuschläge

- Mindermengenzuschlag
- Trockeneiszuschlag
- Gefahrgutzuschlag
- Expressversand

### SZABO-SCANDIC HandelsgmbH

Quellenstraße 110, A-1100 Wien

T. +43(0)1 489 3961-0

F. +43(0)1 489 3961-7

[mail@szabo-scandic.com](mailto:mail@szabo-scandic.com)

[www.szabo-scandic.com](http://www.szabo-scandic.com)

[linkedin.com/company/szaboscandic](https://www.linkedin.com/company/szaboscandic) 

Technically  
Speaking

**CEDARLANE**<sup>®</sup>  
[www.cedarlanelabs.com](http://www.cedarlanelabs.com)



Conveniently Delivering You Today's Innovations  
for the Science of Tomorrow™

**Anti-Rat CD2 (LFA-2)  
Monoclonal Antibody**

Catalogue#	Format	Size	Concentration	Isotype Control
CL034A	Ascites	0.5 ml	N/A	CLCMG2A00
CL034AP	Purified	250 µg	1.0 mg/ml	CLCMG2A00
CL034AP-2	Purified	500 µg	1.0 mg/ml	CLCMG2A00
CL034LE	Low Endotoxin	500 µg	1.0 mg/ml	CLCMG2A00
CL034B	Biotin	100 µg	0.1 mg/ml	CLCMG2A15
CL034B-5	Biotin	500 µg	0.1 mg/ml	CLCMG2A15
CL034F	FITC	100 µg	0.1 mg/ml	CLCMG2A01
CL034F-5	FITC	500 µg	0.1 mg/ml	CLCMG2A01
CL034NA	Purified/No Azide	1 mg	1.0 mg/ml	CLCMG2A00
CL034PE	PE	50 µg	0.1 mg/ml	CLCMG2A04
CL034PE-4	PE	200 µg	0.1 mg/ml	CLCMG2A04
CL034AF4	Alexa Fluor <sup>®</sup> 488	100 µg	0.1 mg/ml	N/A

Alexa Fluor<sup>®</sup> is a registered trademark of Life Technologies Corporation.

Isotype: Mouse IgG<sub>2a</sub>

**DESCRIPTION:**

Cedarlane's biotin anti-rat CD2 (LFA-2) monoclonal antibody reacts with the 50 kDa surface glycoprotein LFA-2, designated as CD2. LFA-2 is the receptor for LFA-3. This antibody labels all peripheral T cells and most thymocytes but does not label B cells or peritoneal macrophages. It does not activate T cells (1,2,3).

This clone is reported to work with frozen and paraffin sections (4).

**PRESENTATION:**

**Purified:** Purified IgG buffered in PBS and 0.02% NaN<sub>3</sub>. (Purified from ascitic fluid via Protein G Chromatography).

**LE:** Purified Ig buffered in PBS, no preservative, 0.2µm sterile filtered. (Purified from cell culture supernatant via Protein G Chromatography)

**Biotin, FITC, PE and AF488:** Biotin/FITC/PE/AF488 conjugated IgG buffered in PBS, 0.02% NaN<sub>3</sub> and EIA grade BSA as a stabilizing protein to bring total protein concentration to 4-5 mg/mL.

**No Azide:** Purified Ig buffered in PBS, no preservative, 0.2µm sterile filtered.

Visit our website for your local distributor.

**CEDARLANE**<sup>®</sup>



[www.cedarlanelabs.com](http://www.cedarlanelabs.com)

An ISO 9001:2000 and ISO 13485:2003  
registered company.

In CANADA: Toll Free: 1-800-268-5058

4410 Paletta Court, Burlington, ON L7L 5R2 ph: (289) 288-0001, fax: (289) 288-0020  
e-mail: [general@cedarlanelabs.com](mailto:general@cedarlanelabs.com)

In the USA: Toll Free: 1-800-721-1644

1210 Turrentine Street, Burlington, NC 27215 ph: (336) 513-5135, fax: (336) 513-5138  
e-mail: [service@cedarlanelabs.com](mailto:service@cedarlanelabs.com)

**STORAGE/STABILITY:**

For all formats, store at 4°C. DO NOT FREEZE **PE and AF488** conjugates. For long term storage (**Purified, LE, Biotin, FITC, No Azide**), aliquot and freeze unused portion at -20°C in volumes appropriate for single usage. Avoid freeze/thaw cycles.

**SPECIFICATIONS:**

Clone: MRC OX-34

Hybridoma Production:

Immunization:

Immunogen: T Blasts prepared in mixed lymphocyte reactions with rat T helper cells against irradiated spleen.

Donor: BALB/c spleen

Fusion Partner: NSO/1

Specificity: Rat CD2 (LFA-2)

**TEST RESULTS:**

Tissue Distribution by Flow Cytometry Analysis:

Rat Strain: Wistar

Cell Concentration: 1x10<sup>6</sup> cells per tests

Antibody Concentration Used: 0.1 µg/10<sup>6</sup> cells

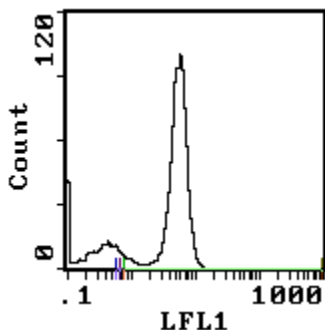
Cell Source

Percentage of cells stained above control:

Thymus 97.2%

Spleen 30.4%

Lymph Node 79.3%



Cell Source: Lymph Node

**N.B. Appropriate control samples should always be included in any labeling studies.**

**\* For optimal results in various applications, it is recommended that each investigator determine dilutions appropriate for individual use.**

**REFERENCES:**

- 1) Jeffries, W.A., Green, J.R. and A.F. Williams. 1985. Authentic T Helper CD4 (W3/25) antigen on rat peritoneal macrophages. *J. Exp. Med.* 162, 117-127.
- 2) Beyers, A.D., A.N. Barclay, D.A. Lae, et al. 1989. Activation of T-lymphocytes via monoclonal antibodies against rat cell surface antigens with particular reference to CD2 antigen. *Immunol.Rev.* 111: 59-77.
- 3) Clark, S.J., D.A. Law, D.J. Paterson, et al. 1988. Activation of rat T lymphocytes by anti-CD2 monoclonal antibodies. *J. Exp. Med.* 167: 1861-1872.
- 4) Whiteland, J.L et al (1995). Immunohistochemical detection of T cell subsets and other leukocytes in paraffin embedded rat and mouse tissues with monoclonal antibodies. *J. Histochem. Cytochem.* 43: 313-320.

**FOR RESEARCH USE ONLY**  
® is a registered trademark of Cedarlane