



SZABO SCANDIC

Part of Europa Biosite

Produktinformation



Forschungsprodukte & Biochemikalien



Zellkultur & Verbrauchsmaterial



Diagnostik & molekulare Diagnostik



Laborgeräte & Service

Weitere Information auf den folgenden Seiten!
See the following pages for more information!



Lieferung & Zahlungsart

siehe unsere [Liefer- und Versandbedingungen](#)

Zuschläge

- Mindermengenzuschlag
- Trockeneiszuschlag
- Gefahrgutzuschlag
- Expressversand

SZABO-SCANDIC HandelsgmbH

Quellenstraße 110, A-1100 Wien

T. +43(0)1 489 3961-0

F. +43(0)1 489 3961-7

mail@szabo-scandic.com

www.szabo-scandic.com

[linkedin.com/company/szaboscandic](https://www.linkedin.com/company/szaboscandic) 

TECHNICALLY *Speaking*

Place your order with CEDARLANE® or your local distributor.

Please contact CEDARLANE® for lot specific information.

Biotin Anti-Rat SIRP (Signal-Regulatory Protein) Monoclonal Antibody

CL041B
CL041B-5
LOT: 4141

DESCRIPTION:

CL041B (MRC OX-41) monoclonal antibody recognizes rat SIRP (Signal-Regulatory Protein), a surface protein of about 110 kDa. SIRP is selectively expressed by myeloid cells (macrophages, monocytes, granulocytes, dendritic cells) and neurons. The SIRP antigen is a transmembrane glycoprotein with 3 immunoglobulin-like extracellular domains: an N-terminal V-set domain and two C1-set domains. The SIRP Ig domains are closely related to those of the antigen receptors, Ig, TCR and MHC. The selective expression of this antigen by myeloid and neuronal cells suggests that SIRP is involved in the modulation of myeloid and neuronal cell function.

This clone can be used in FACS analysis, immunofluorescence, immunocytochemistry, and indirect radioimmunoassays.

PRESENTATION:

100 µg (**CL041B**) or 500 µg (**CL041B-5**) Biotin conjugated Ig buffered in PBS, 0.02% NaN₃ and EIA grade BSA as a stabilizing protein to bring total protein concentration to 4-5 mg/ml.

STORAGE/STABILITY:

Store at 4°C. For long term storage, aliquot and freeze unused portion at -20°C in volumes appropriate for single usage. Avoid freeze/thaw cycles.

For more information or to place an order please contact...

CEDARLANE®
LABORATORIES LIMITED



toll free: 1-800-268-5058
in North America

phone: (905) 878-8891 • fax: (905) 878-7800

5516 - 8th Line, R.R.#2, Hornby, Ontario, CANADA L0P 1E0

or visit our website for a list of our international distributors including contact information
website: www.cedarlanelabs.com • e-mail: info@cedarlanelabs.com

SPECIFICATIONS:

Clone: MRC OX-41

Hybridoma Production:

Immunization: Immunogen: Rat Peritoneal Macrophages
Donor: BALB/c Spleen

Fusion Partner: NSO/U

Specificity: Rat SIRP (Signal-Regulatory Protein)

Ig Class: Mouse IgG_{2a}

Format: Biotin conjugated Ig buffered in PBS, 0.02% NaN₃ and EIA grade BSA as a stabilizing protein to bring total protein concentration to 4-5 mg/ml. (Purified from ascitic fluid via Protein G Chromatography)

Antibody Concentration: 0.1 mg/ml

FLOW CYTOMETRY ANALYSIS:**Method:**

1. Prepare a cell suspension in media A. For cell preparations, deplete the red blood cell population with Lympholyte®-Rat cell separation medium (CL5040).
2. Wash 2 times.
3. Resuspend the cells to a concentration of 2×10^7 cells/ml in media A. Add 50 μ l of this suspension to each tube (each tube will then contain 1×10^6 cells, representing 1 test).
4. To each tube, add 0.5-1.0 μ g* of **CL041B** or **CL041B-5**.
5. Vortex the tubes to ensure thorough mixing of antibody and cells.
6. Incubate the tubes for 30 minutes at 4°C.
7. Wash 2 times at 4°C.
8. Add 100 μ l of secondary antibody **CLCSA1001** (Streptavidin-FITC) at 1:500 dilution.
9. Incubate the tubes at 4°C for 30-60 minutes.
(It is recommended that the tubes are protected from light since most fluorochromes are light sensitive).
10. Wash 2 times at 4°C in media B.
11. Resuspend the cell pellet in 50 μ l ice cold media B.
12. Transfer to suitable tubes for flow cytometric analysis containing 15 μ l of propidium iodide at 0.5 mg/ml in PBS. This stains dead cells by intercalating in DNA.

Media:

- A. Phosphate buffered saline (pH 7.2) + 5% normal serum of host species + sodium azide (100 μ l of 2M sodium azide in 100 mls).
- B. Phosphate buffered saline (pH 7.2) + 0.5% Bovine serum albumin + sodium azide (100 μ l of 2M sodium azide in 100 mls).

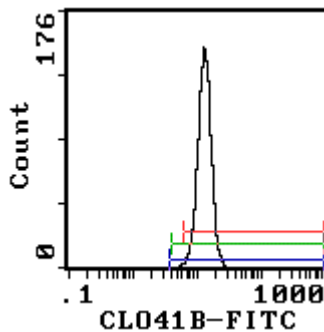
Results:Tissue Distribution by Flow Cytometry Analysis:

Mouse Strain: Wistar

Cell Concentration : 1×10^6 cells per tests

Antibody Concentration Used: $1.0 \mu\text{g}/10^6$ cells

Isotypic Control: Biotin Mouse IgG_{2a}



Cell Source: Peritoneal Macrophages

Percentage of cells stained above control: 98.7%

N.B. Appropriate control samples should always be included in any labeling studies.

*** For optimal results in various applications, it is recommended that each investigator determine dilutions appropriate for individual use.**

REFERENCES:

1. Robinson, A. P., White, T. M. and Mason, D. W. (1986) Macrophage heterogeneity in the rat as delineated by two monoclonal antibodies MRC OX-41 and MRC OX-42, the latter recognizing complement receptor type 3. *Immunology* **57**: 239-247.
2. Adams, S., van der Laan, L. J. W., Vernon-Wilson, E., Renardel de Lavalette, C., Dopp, E. A., Dijkstra, C. D., Simmons, D. L. and van der Berg, T. K. (1998) Signal-Regulatory Protein is Selectively Expressed by Myeloid and Neuronal Cells. *The Journal of Immunology* **161**:1853-1859.

FOR RESEARCH USE ONLY

® is a Registered Trademark of Cedarlane Laboratories Limited.