



SZABO SCANDIC

Part of Europa Biosite

Produktinformation



Forschungsprodukte & Biochemikalien



Zellkultur & Verbrauchsmaterial



Diagnostik & molekulare Diagnostik



Laborgeräte & Service

Weitere Information auf den folgenden Seiten!
See the following pages for more information!



Lieferung & Zahlungsart

siehe unsere [Liefer- und Versandbedingungen](#)

Zuschläge

- Mindermengenzuschlag
- Trockeneiszuschlag
- Gefahrgutzuschlag
- Expressversand

SZABO-SCANDIC HandelsgmbH

Quellenstraße 110, A-1100 Wien

T. +43(0)1 489 3961-0

F. +43(0)1 489 3961-7

mail@szabo-scandic.com

www.szabo-scandic.com

[linkedin.com/company/szaboscandic](https://www.linkedin.com/company/szaboscandic) 

TECHNICALLY *Speaking*

Place your order with CEDARLANE® or your local distributor.

Please contact CEDARLANE® for lot specific information.

Biotin Anti-Rat CD44 Monoclonal Antibody

CL044B
CL044B-5
LOT: 4441

DESCRIPTION:

Cedarlane's anti-rat CD44 (OX-49) monoclonal antibody recognizes rat CD44 (Pgp-1), also called CD44H. This antigen is expressed on most leukocytes (except a sub population of B cells) and increases upon activation. The OX-49 antibody binds extracellularly to the standard (S) form on rat leukocytes but it is not known if they bind to the N-terminal region. It has also been reported that the antibody may bind to melanoma cell lines that express CD44V (splice variant form).

This antibody is suitable for flow cytometry, Western Blotting and immunohistochemistry on frozen and paraffin sections.

PRESENTATION:

100 µg (CL044B) or 500 µg (CL044B-5) Biotin conjugated Ig buffered in PBS, 0.02% NaN₃ and EIA grade BSA as a stabilizing protein to bring total protein concentration to 4-5 mg/ml.

STORAGE/STABILITY:

Store at 4°C. For long term storage, aliquot and freeze unused portion at -20°C in volumes appropriate for single usage. Avoid freeze/thaw cycles.

SPECIFICATIONS:

Clone: MRC OX-49

Hybridoma Production:

Immunization: Immunogen: T cell blasts
Donor: BALB/c spleen

Fusion Partner: myeloma cell line NSO/1

Specificity: Rat CD44

Continued Overleaf...

For more information or to place an order please contact...

CEDARLANE®
LABORATORIES LIMITED



toll free: 1-800-268-5058
in North America

phone: (905) 878-8891 • fax: (905) 878-7800

5516 - 8th Line, R.R.#2, Hornby, Ontario, CANADA L0P 1E0

or visit our website for a list of our international distributors including contact information
website: www.cedarlanelabs.com • e-mail: info@cedarlanelabs.com

Ig Class: Mouse IgG_{2a}

Format: Biotin conjugated Ig buffered in PBS, 0.02% NaN₃ and EIA grade BSA as a stabilizing protein to bring total protein concentration to 4-5 mg/ml. (Purified from ascitic fluid via Protein G Chromatography).

Antibody Concentration: 0.1 mg/ml

FLOW CYTOMETRY ANALYSIS:

Method:

1. Prepare a cell suspension in media A. For cell preparations, deplete the red blood cell population with Lympholyte[®]-Rat cell separation medium (CL5040).
2. Wash 2 times.
3. Resuspend the cells to a concentration of 2×10^7 cells/ml in media A. Add 50 μ l of this suspension to each tube (each tube will then contain 1×10^6 cells, representing 1 test).
4. To each tube, add 1.0-0.5 μ g* of **CL044B or CL044B-5**.
5. Vortex the tubes to ensure thorough mixing of antibody and cells.
6. Incubate the tubes for 30 minutes at 4°C.
7. Wash 2 times at 4°C.
8. Add 100 μ l of secondary antibody **CLCSA1001** (Streptavidin-FITC) at 1:500 dilution.
9. Incubate the tubes at 4°C for 30-60 minutes.
(It is recommended that the tubes are protected from light since most fluorochromes are light sensitive).
10. Wash 2 times at 4°C in media B.
11. Resuspend the cell pellet in 50 μ l ice cold media B.
12. Transfer to suitable tubes for flow cytometric analysis containing 15 μ l of propidium iodide at 0.5 mg/ml in PBS. This stains dead cells by intercalating in DNA.

Media:

- A. Phosphate buffered saline (pH 7.2) + 5% normal serum of host species + sodium azide (100 μ l of 2M sodium azide in 100 mls).
- B. Phosphate buffered saline (pH 7.2) + 0.5% Bovine serum albumin + sodium azide (100 μ l of 2M sodium azide in 100 mls).

Results:

Tissue Distribution by Flow Cytometry Analysis:

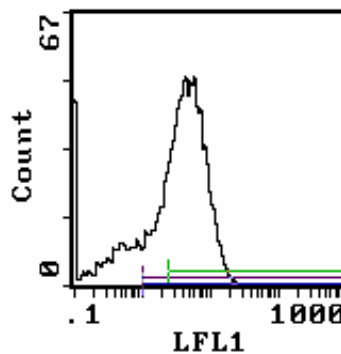
Rat Strain: Wistar

Cell Concentration: 1×10^6 cells per test

Antibody Concentration Used: 0.5 μ g/ 10^6 cells

Isotypic Control: Biotin Mouse IgG_{2a} (CLCMG2A15)

<u>Cell Source</u>	<u>Percentage of cells stained above control:</u>
Thymus	96.3%
Spleen	66.2%
Lymph Node	89.9%



Cell Source: Spleen
Percentage of cells stained above control: 66.2%

Continued Overleaf...

N.B. Appropriate control samples should always be included in any labelling studies.

- **For optimal results in various applications, it is recommended that each investigator determine dilutions appropriate for individual use.**

REFERENCES:

1. Patterson, D.J., *et al.* 1987 Antigens of activated rat T lymphocytes including a molecule of 50,000 M_r detected only on CD4 positive T blasts. *Molec. Immunol.* **24**(12): 1281-1290.
2. Arch, R., *et al.* 1992. Participation in normal immune response of a metastases inducing splice variant of CD44. *Science.* **257**:682-685.
3. Wang, H., *et al.* 2001. Use of suppression subtractive hybridization for differential gene expression in stroke: discovery of CD44 gene expression and localization in permanent focal stroke in rats. *Stroke.* **32**: 1020-1027.
4. Jain, M., *et al.* 1996. Role of CD44 in the reaction of vascular smooth muscle cells to arterial wall injury. *J. Clin. Invest.* **97**(3): 596-603.
5. Lewington, A.J.P., *et al.* 2000. Expression of CD44 in kidney after acute ischemic injury in rats. *Am. J. Physiol.* **278**: R247-R254.
6. Foster, L.C., *et al.* 1998. Regulation of CD44 gene expression by the proinflammatory cytokine interleukin-1b in vascular smooth muscle cells. *J. Biol. Chem.* **273**(32): 20341-20346.

FOR RESEARCH USE ONLY

® is a Registered Trademark of Cedarlane Laboratories Limited.