



SZABO SCANDIC

Part of Europa Biosite

Produktinformation



Forschungsprodukte & Biochemikalien



Zellkultur & Verbrauchsmaterial



Diagnostik & molekulare Diagnostik



Laborgeräte & Service

Weitere Information auf den folgenden Seiten!
See the following pages for more information!



Lieferung & Zahlungsart

siehe unsere [Liefer- und Versandbedingungen](#)

Zuschläge

- Mindermengenzuschlag
- Trockeneiszuschlag
- Gefahrgutzuschlag
- Expressversand

SZABO-SCANDIC HandelsgmbH

Quellenstraße 110, A-1100 Wien

T. +43(0)1 489 3961-0

F. +43(0)1 489 3961-7

mail@szabo-scandic.com

www.szabo-scandic.com

[linkedin.com/company/szaboscandic](https://www.linkedin.com/company/szaboscandic) 

TECHNICALLY *Speaking*

Place your order with CEDARLANE® or your local distributor.

Please contact CEDARLANE® for lot specific information.

FITC Anti-Rat CD48 Monoclonal Antibody

**CL045F
CL045F-5
LOT: 4531**

DESCRIPTION:

Cedarlane's FITC anti-rat CD45 (Blast-1) monoclonal antibody recognizes a rat cell surface glycoprotein of 45 kDa that is present on a wide variety of hematopoietic cells and on endothelial cells. The antigen is identical to the mouse BCM1 antigen. This antibody inhibits allogeneic mixed lymphocyte reactions using lymph node cells as responders and spleen cells as stimulators. CD48 has recently been identified as a ligand of the NK cell inhibitory receptor CD244.

This antibody is suitable for flow cytometry.

PRESENTATION:

100 µg (CL045F) or 500 µg (CL045F-5) FITC conjugated Ig buffered in PBS, 0.02% NaN₃ and EIA grade BSA as a stabilizing protein to bring total protein concentration to 4-5 mg/ml.

STORAGE/STABILITY:

Store at 4°C. For long term storage, aliquot and freeze unused portion at -20°C in volumes appropriate for single usage. Avoid freeze/thaw cycles. Avoid prolonged exposure to light.

For more information or to place an order please contact...

CEDARLANE®
LABORATORIES LIMITED
5516 - 8th Line, R.R.#2, Hornby, Ontario, CANADA L0P 1E0



*toll free: 1-800-268-5058
in North America*

phone: (905) 878-8891 • fax: (905) 878-7800

or visit our website for a list of our international distributors including contact information
website: www.cedarlanelabs.com • e-mail: info@cedarlanelabs.com

SPECIFICATIONS:

Clone: MRC OX-45

Hybridoma Production:

Immunization: Immunogen: rat T cell blasts (stimulated purified T helper cells with allogeneic irradiated rat spleen cells)

Donor: BALB/c spleen

Fusion Partner: myeloma cell line NSO/1

Specificity: Rat CD45

Ig Class: Mouse IgG₁

Format: FITC conjugated Ig buffered in PBS, 0.02% NaN₃ and EIA grade BSA as a stabilizing protein to bring total protein concentration to 4-5 mg/ml. (Purified from ascitic fluid via Protein G Chromatography).

Antibody Concentration: 0.1 mg/ml

FLOW CYTOMETRY ANALYSIS:

Method:

1. Prepare a cell suspension in media A. For cell preparations, deplete the red blood cell population with Lympholyte®-Rat cell separation medium (CL5040).
2. Wash 2 times.
3. Resuspend the cells to a concentration of 2×10^7 cells/ml in media A. Add 50 μ l of this suspension to each tube (each tube will then contain 1×10^6 cells, representing 1 test).
4. To each tube, add 1.0-0.5 μ g* of **CL045F or CL045F-5**.
5. Vortex the tubes to ensure thorough mixing of antibody and cells.
6. Incubate the tubes for 30 minutes at 4°C.
(It is recommended that the tubes are protected from light since most fluorochromes are light sensitive).
7. Wash 2 times at 4°C.
8. Resuspend the cell pellet in 50 μ l ice cold media B.
9. Transfer to suitable tubes for flow cytometric analysis containing 15 μ l of propidium iodide at 0.5 mg/ml in PBS. This stains dead cells by intercalating in DNA.

Media:

- A. Phosphate buffered saline (pH 7.2) + 5% normal serum of host species + sodium azide (100 μ l of 2M sodium azide in 100 mls).
- B. Phosphate buffered saline (pH 7.2) + 0.5% Bovine serum albumin + sodium azide (100 μ l of 2M sodium azide in 100 mls).

Results:

Tissue Distribution by Flow Cytometry Analysis:

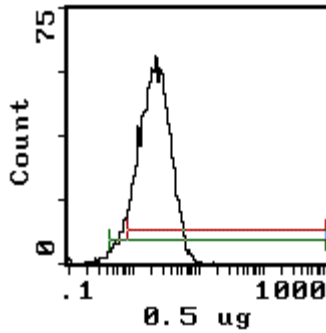
Rat Strain: Wistar

Cell Concentration: 1×10^6 cells per tests

Antibody Concentration Used: $0.5 \mu\text{g}/10^6$ cells

Isotypic Control: FITC Mouse IgG₁ (CLCMG101)

<u>Cell Source</u>	<u>Percentage of cells stained above control:</u>
Thymus	91.9%
Bone Marrow	98.6%
Lymph Node	98.5%



Cell Source: Thymus

Percentage of cells stained above control: 91.9%

N.B. Appropriate control samples should always be included in any labelling studies.

*** For optimal results in various applications, it is recommended that each investigator determine dilutions appropriate for individual use.**

REFERENCES:

1. J. Arvieux, W.A. Jefferies, D. J. Patterson, A. F. Williams and J.R. Green. (1986) Monoclonal antibodies against a rat leukocyte antigen block antigen-induced T-cell responses via an effect on accessory cells. *Immunol.* **58** 337-342.
2. Wong *et al.* (1990) Mouse BCM1 Antigen. *J Exp Med.* 171:2115.