



# SZABO SCANDIC

Part of Europa Biosite

## Produktinformation



Forschungsprodukte & Biochemikalien



Zellkultur & Verbrauchsmaterial



Diagnostik & molekulare Diagnostik



Laborgeräte & Service

Weitere Information auf den folgenden Seiten!  
See the following pages for more information!



### Lieferung & Zahlungsart

siehe unsere [Liefer- und Versandbedingungen](#)

### Zuschläge

- Mindermengenzuschlag
- Trockeneiszuschlag
- Gefahrgutzuschlag
- Expressversand

### SZABO-SCANDIC HandelsgmbH

Quellenstraße 110, A-1100 Wien

T. +43(0)1 489 3961-0

F. +43(0)1 489 3961-7

[mail@szabo-scandic.com](mailto:mail@szabo-scandic.com)

[www.szabo-scandic.com](http://www.szabo-scandic.com)

[linkedin.com/company/szaboscandic](https://www.linkedin.com/company/szaboscandic) 

Technically  
Speaking

**CEDARLANE**<sup>®</sup>  
[www.cedarlanelabs.com](http://www.cedarlanelabs.com)



Conveniently Delivering You Today's Innovations  
for the Science of Tomorrow™

### Anti-Rat Pan T Cells Monoclonal Antibody

Catalogue#	Format	Size	Concentration	Isotype Control
CL052A	Ascities	0.5ml	N/A	CLCMG2A00
CL052AP	Purified	250ug	1.0 mg/ml	CLCMG2A00
CL052AP-S	Purified	50ug	1.0 mg/ml	CLCMG2A00
CL052AP-2	Purified	500ug	1.0 mg/ml	CLCMG2A00
CL052NA	Purified	1.0mg	1.0 mg/ml	CLCMG2A00
CL052B	Biotin	100ug	0.1 mg/ml	CLCMG2A15
CL052B-5	Biotin	500ug	0.1 mg/ml	CLCMG2A15
CL052F	FITC	100ug	0.1 mg/ml	CLCMG2A01
CL052F-5	FITC	500 ug	0.1 mg/ml	CLCMG2A01

Isotype: Mouse IgG<sub>2a</sub>, k

#### **DESCRIPTION:**

Cedarlane's anti-rat pan T lymphocyte monoclonal antibody immunoprecipitates a two chain structure (95, 120 kDa) largely restricted to T lymphocytes and thymocytes. Applications therefore include the identification of T lymphocyte lineage cells in suspension and tissue. CL052 has previously been used to stain T cell areas of the spleen, lymph nodes and Peyer's patch (1). In the thymus, CL052 labels all thymocytes, however medullary cells are more strongly positive than cortical cells (1). CL052 does not label such non-lymphoid tissues such as brain, kidney, liver and skin (1).

This antibody stains approximately 1.0% of bone marrow cells, and 56% thoracic duct lymphocytes. Weak staining occurs with 50% dendritic cells from thoracic duct of mesenteric lymphadenectomized rats. The antigen recognized by CL052 is not expressed on granulocytes or macrophages (1).

The function of the antigen recognized by this antibody has not, as yet, been associated with any particular function of T cells. CL052 does not inhibit the allogeneic mixed leukocyte response, nor does it inhibit T cytotoxic effector cell function.

This clone works in flow cytometry, Immunoprecipitation and with frozen sections (1,2).

#### **PRESENTATION:**

**Purified:** Purified IgG buffered in PBS and 0.02% NaN<sub>3</sub> (Purified from ascitic fluid via Protein G Chromatography). For maximum recovery of contents, spin down tube before use.

**Biotin, FITC and PE:** Biotin/FITC/PE conjugated IgG buffered in PBS, 0.02% NaN<sub>3</sub> and EIA grade BSA as a stabilizing protein to bring total protein concentration to 4-5 mg/ml.

**No Azide:** Purified Ig buffered in PBS, no preservative, 0.2µm sterile filtered.

*Continued Overleaf.....*

Visit our website for your local distributor.

**CEDARLANE**<sup>®</sup>



[www.cedarlanelabs.com](http://www.cedarlanelabs.com)

An ISO 9001:2000 and ISO 13485:2003  
registered company.

In CANADA: Toll Free: 1-800-268-5058

4410 Paletta Court, Burlington, ON L7L 5R2 ph: (289) 288-0001, fax: (289) 288-0020  
e-mail: [general@cedarlanelabs.com](mailto:general@cedarlanelabs.com)

In the USA: Toll Free: 1-800-721-1644

1210 Turrentine Street, Burlington, NC 27215 ph: (336) 513-5135, fax: (336) 513-5138  
e-mail: [service@cedarlanelabs.com](mailto:service@cedarlanelabs.com)

**STORAGE/STABILITY:**

For all formats, store at 4°C. DO NOT FREEZE PE conjugates. For long term storage (**Purified, Biotin, FITC, No Azide**), aliquot and freeze unused portion at -20°C in volumes appropriate for single usage. Avoid freeze/thaw cycles.

**SPECIFICATIONS:**

Clone: OX-52

Hybridoma Production:

Immunization: Immunogen: PVG-RT1<sup>c</sup> thoracic duct lymphocytes and spleen cells  
Donor: BALB/c spleen  
Fusion Partner: NSO/U

Specificity: Rat Pan T Lymphocyte

**STRAIN DISTRIBUTION:**

Strains Tested: Wistar, Buffalo, Brown Norway, ACI, Fischer 344, Lewis  
Positive: Wistar, Buffalo, Brown Norway, ACI, Fischer 344, Lewis  
Negative: none

**FLOW CYTOMETRIC ANALYSIS:**

Donor: Fischer

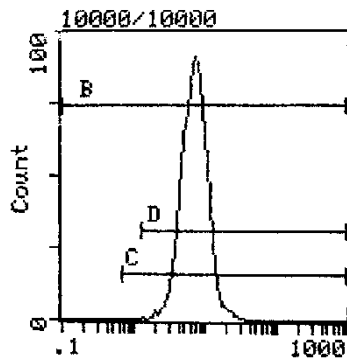
Cell Concentration: 1x10<sup>6</sup> cells

Antibody Concentration: 0.5 µg/10<sup>6</sup> cells

**CELL SOURCE**

**PERCENT STAINING**

Thymus	98.9
Spleen	42.4
Lymph Node	83.2



Cell Source: Thymus

**N.B.** Appropriate control samples should always be included in any labelling studies.

\* For optimal results in various applications, it is recommended that each investigator determine dilutions appropriate for individual use.

**REFERENCES:**

1. Robinson, A.P., Puklavec, M., and D.W. Mason. Immunology. 1986. 57, 527-531. MRC OX-52: A Rat T Cell Antigen.
2. Meltzer JC, et al. (2003) Contribution of the adrenal glands and splenic nerve to LPS-induced splenic cytokine production in the rat. Brain Behav Immun. 17(6):482-97.

**FOR RESEARCH USE ONLY**  
® is a registered trademark of Cedarlane