



SZABO SCANDIC

Part of Europa Biosite

Produktinformation



Forschungsprodukte & Biochemikalien



Zellkultur & Verbrauchsmaterial



Diagnostik & molekulare Diagnostik



Laborgeräte & Service

Weitere Information auf den folgenden Seiten!
See the following pages for more information!



Lieferung & Zahlungsart

siehe unsere [Liefer- und Versandbedingungen](#)

Zuschläge

- Mindermengenzuschlag
- Trockeneiszuschlag
- Gefahrgutzuschlag
- Expressversand

SZABO-SCANDIC HandelsgmbH

Quellenstraße 110, A-1100 Wien

T. +43(0)1 489 3961-0

F. +43(0)1 489 3961-7

mail@szabo-scandic.com

www.szabo-scandic.com

[linkedin.com/company/szaboscandic](https://www.linkedin.com/company/szaboscandic) 

TECHNICALLY *Speaking*

Place your order with CEDARLANE® or your local distributor.

Please contact CEDARLANE® for lot specific information.

FITC Anti-Rat $\alpha\beta$ TCR Monoclonal Antibody

CL057F

CL057F-5

LOT: 5731

DESCRIPTION:

Cedarlane's anti-rat $\alpha\beta$ T cell receptor monoclonal antibody detects a T cell-specific heterodimeric 40 and 46 kD cell surface protein that is expressed on the vast majority, but not all, peripheral rat T cells. CL057F induces blastoid transformation and IL-2R expression in T-cells when cross linked on an artificial surface. It also induces cell proliferation when exogenous IL-2 is added.

Applications: Flow cytometry, immunohistochemical staining on frozen sections.

PRESENTATION:

100 μg (CL057F) or 500 μg (CL057F-5) FITC conjugated Ig buffered in PBS, 0.02% NaN_3 and EIA grade BSA as a stabilizing protein to bring total protein concentration to 4-5 mg/ml.

STORAGE/STABILITY:

Store at 4°C. For long term storage, aliquot and freeze unused portion at -20°C in volumes appropriate for single usage. Avoid freeze/thaw cycles. Avoid prolonged exposure to light.

For more information or to place an order please contact...

CEDARLANE®
LABORATORIES LIMITED



*toll free: 1-800-268-5058
in North America*

phone: (905) 878-8891 • fax: (905) 878-7800

5516 - 8th Line, R.R.#2, Hornby, Ontario, CANADA L0P 1E0

or visit our website for a list of our international distributors including contact information

website: www.cedarlanelabs.com • e-mail: info@cedarlanelabs.com

SPECIFICATIONS:

Clone: R73

Hybridoma Production:

Immunization: Immunogen: Rat T Blasts
Donor: BALB/c spleen

Fusion Partner: X63-Ag 8.653

Specificity: Rat $\alpha\beta$ TCR

Ig Class: Mouse IgG₁

Format: FITC conjugated Ig buffered in PBS, 0.02% NaN₃ and EIA grade BSA as a stabilizing protein to bring total protein concentration to 4-5 mg/ml. (Purified from Bioreactor supernatant via Protein G Chromatography)

Antibody Concentration: 0.1 mg/ml

FLOW CYTOMETRY ANALYSIS:

Method:

1. Prepare a cell suspension in media A. For cell preparations, deplete the red blood cell population with Lympholyte[®]-R cell separation medium (CL5040).
2. Wash 2 times.
3. Resuspend the cells to a concentration of 2×10^7 cells/ml in media A. Add 50 μ l of this suspension to each tube (each tube will then contain 1×10^6 cells, representing 1 test).
4. To each tube, add 0.2 - 0.5 μ g* of **CL057F** or **CL057F-5** per 10^6 cells.
5. Vortex the tubes to ensure thorough mixing of antibody and cells.
6. Incubate the tubes for 30 minutes at 4°C.
(It is recommended that the tubes are protected from light, since most fluorochromes are light sensitive.)
7. Wash 2 times at 4°C.
8. Resuspend the cell pellet in 50 μ l ice cold media B.
9. Transfer to suitable tubes for flow cytometric analysis containing 15 μ l of propidium iodide at 0.5 mg/ml in PBS. This stains dead cells by intercalating in DNA.

Media:

- A. Phosphate buffered saline (pH 7.2) + 5% normal serum of host species + sodium azide (100 µl of 2M sodium azide in 100 mls).
- B. Phosphate buffered saline (pH 7.2) + 0.5% Bovine serum albumin + sodium azide (100 µl of 2M sodium azide in 100 mls).

Results:Tissue Distribution by Flow Cytometry Analysis:

Rat Strain: Buffalo

Cell Concentration : 1×10^6 cells per test

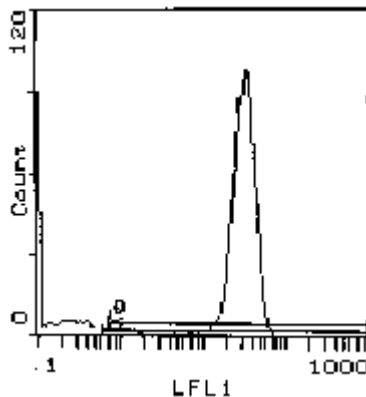
Antibody Concentration Used: $0.2 \mu\text{g}/10^6$ cells

Isotypic Control: FITC Mouse IgG₁(CLCMG101)

Cell SourcePercentage of cells stained above control:

Thymus	92.7%
Splenic T Cells*	83.5 %

*(T cells isolated with CL102 - Cedarlane's Rat T Cell Recovery Column Kit)



Cell Source: Splenic T cells

Percentage of cells stained above control: 83.5%

N.B. Appropriate control samples should always be included in any labelling studies.

*** For optimal results in various applications, it is recommended that each investigator determine dilutions appropriate for individual use.**

Strain Distribution by Flow Cytometry Analysis:

Procedure: see page 2

Cell Concentration : 1×10^6 cells per test

Antibody Concentration Used: $0.2 \mu\text{g}/10^6$ cells

Strains Tested: Buffalo, Wistar, Fischer 344, Brown Norway

Positive: Buffalo, Wistar, Fischer 344, Brown Norway

Negative: none

REFERENCES:

1. Hunig, T., Wallny, H.J, Hartley, J.K., Lawetzky, A., and Tiefenthaler, G. (1989). A Monoclonal Antibody to a Constant Determinant of the Rat T-Cell Antigen Receptor that Induces T-Cell Activation. J. Exp. Med. 169:73-86.

FOR RESEARCH USE ONLY

® is a Registered Trademark of Cedarlane Laboratories Limited.