



SZABO SCANDIC

Part of Europa Biosite

Produktinformation



Forschungsprodukte & Biochemikalien



Zellkultur & Verbrauchsmaterial



Diagnostik & molekulare Diagnostik



Laborgeräte & Service

Weitere Information auf den folgenden Seiten!
See the following pages for more information!



Lieferung & Zahlungsart

siehe unsere [Liefer- und Versandbedingungen](#)

Zuschläge

- Mindermengenzuschlag
- Trockeneiszuschlag
- Gefahrgutzuschlag
- Expressversand

SZABO-SCANDIC HandelsgmbH

Quellenstraße 110, A-1100 Wien

T. +43(0)1 489 3961-0

F. +43(0)1 489 3961-7

mail@szabo-scandic.com

www.szabo-scandic.com

[linkedin.com/company/szaboscandic](https://www.linkedin.com/company/szaboscandic) 

Technically
Speaking

CEDARLANE[®]
www.cedarlanelabs.com



Conveniently Delivering You Today's Innovations
for the Science of Tomorrow™

**Anti-Rat CD62L
Monoclonal Antibody**

Catalogue#	Format	Size	Concentration	Isotype Control
CL085A	Ascites	0.5ml	NA	CLCMG100
CL085AP/-2	Purified	250µg/500µg	1.0 mg/ml	CLCMG100
CL085B/-5	Biotin	100µg/500µg	0.1 mg/ml	CLCMG115
CL085F/-5	FITC	100µg/500µg	0.1 mg/ml	CLCMG101
CL085PE/-4	PE	50µg/200µg	0.1 mg/ml	CLCMG104

Isotype: Mouse IgG1

DESCRIPTION:

Cedarlane's anti-rat CD62L monoclonal antibody recognizes rat leukocyte selectin (L-selectin). CD62L is expressed constitutively on leukocytes and is expressed by a subset of thymocytes, predominantly single positive CD4 or CD8 cells and a majority of lymph node cells in rats. CD62L binds well to O-glycans present on certain glycoforms of the mucins GlyCAM-1, CD34 and MAdCAM-1. CD62L is reported to be capable of transducing signals when cross-linked and has been shown to stimulate β_2 -integrin-mediated adhesion when bound to soluble GlyCAM-1.

L-selectin expressing CD4⁺CD8⁻ thymocytes were shown through adoptive transfer to protect rats from insulin-dependent diabetes. CD4⁺CD8⁻ thymocytes must mature to the stage of L-selectin expression before they can mediate normal T cell function. [2] Sensitive detection systems may be required on some tissues as expression of rat CD62L is weak.

Applications include: Flow cytometry and ELISA [1].

PRESENTATION:

Ascites: Lyophilized

Purified: Purified IgG buffered in PBS and 0.02% NaN₃. (Purified from ascitic fluid via Protein G Chromatography). For maximum recovery of contents, spin down tube before use.

Biotin, FITC and PE: Biotin/FITC/PE conjugated IgG buffered in PBS, 0.02% NaN₃ and EIA grade BSA as a stabilizing protein to bring total protein concentration to 4-5 mg/ml.

STORAGE/STABILITY:

Store **Ascites** at -20°C. For all other formats, store at 4°C. DO NOT FREEZE **PE** conjugates. For long term storage (**Purified, Biotin** and **FITC**), aliquot and freeze unused portion at -20°C in volumes appropriate for single usage. Avoid freeze/thaw cycles.

Visit our website for your local distributor.

CEDARLANE[®]



www.cedarlanelabs.com

An ISO 9001:2000 and ISO 13485:2003
registered company.

In CANADA: **Toll Free: 1-800-268-5058**

4410 Paletta Court, Burlington, ON L7L 5R2 ph: (289) 288-0001, fax: (289) 288-0020
e-mail: general@cedarlanelabs.com

In the USA: **Toll Free: 1-800-721-1644**

1210 Turrentine Street, Burlington, NC 27215 ph: (336) 513-5135, fax: (336) 513-5138
e-mail: service@cedarlanelabs.com

SPECIFICATIONS:

Clone: OX-85

Hybridoma Production:

Immunization: Immunogen: Recombinant rat L-selectin.
Donor: BALB/c Spleen
Fusion Partner: NSI/1

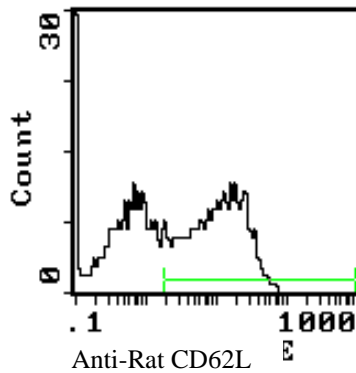
Specificity: Rat Leukocyte Common Antigen (L-selectin)

TEST RESULTS:

Tissue Distribution by Flow Cytometry Analysis:

Rat Strain: Wistar
Cell Concentration: 1×10^6 cells per test
Antibody Concentration: $1.0 \mu\text{g} / 10^6$ cells

<u>Cell population</u>	<u>Percentage of cells stained above control:</u>
Whole thymus	10.7%
CD4 ⁺ CD8 ⁻ T-cells	50.3%



Cell Source: CD4⁺CD8⁻ T-cells

N.B. Appropriate control samples should always be included in any labeling studies.

*** For optimal results in various applications, it is recommended that each investigator determine dilutions appropriate for individual use.**

REFERENCES:

1. Nicholson, M.W., Barclay, A.N., Singer, M.S., Rosen, S.D., and P.A. Van der Merwe. (1997) Affinity and Kinetic Analysis of L-Selectin (CD62L) binding to glycosylation-dependent Cell-Adhesion Molecule-1. *J. Biol. Chem.* 273: 763-770.
2. Seddon, B., Abdelhadi, S., Nicholson, M., and D. Mason. (1996) CD4⁺CD8⁻ thymocytes that express L-selectin protect rats from diabetes upon adoptive transfer. *Eur. J. Immunol.* 26: 2702-2708.

FOR RESEARCH USE ONLY

® is a registered trademark of Cedarlane

