



# SZABO SCANDIC

Part of Europa Biosite

## Produktinformation



Forschungsprodukte & Biochemikalien



Zellkultur & Verbrauchsmaterial



Diagnostik & molekulare Diagnostik



Laborgeräte & Service

Weitere Information auf den folgenden Seiten!  
See the following pages for more information!



### Lieferung & Zahlungsart

siehe unsere [Liefer- und Versandbedingungen](#)

### Zuschläge

- Mindermengenzuschlag
- Trockeneiszuschlag
- Gefahrgutzuschlag
- Expressversand

### SZABO-SCANDIC HandelsgmbH

Quellenstraße 110, A-1100 Wien

T. +43(0)1 489 3961-0

F. +43(0)1 489 3961-7

[mail@szabo-scandic.com](mailto:mail@szabo-scandic.com)

[www.szabo-scandic.com](http://www.szabo-scandic.com)

[linkedin.com/company/szaboscandic](https://www.linkedin.com/company/szaboscandic) 

Technically  
Speaking

**CEDARLANE**<sup>®</sup>  
[www.cedarlanelabs.com](http://www.cedarlanelabs.com)



Conveniently Delivering You Today's Innovations  
for the Science of Tomorrow™

**Anti-Rat CD62L  
Monoclonal Antibody**

Catalogue#	Format	Size	Concentration	Isotype Control
<b>CL085A</b>	Ascites	0.5ml	NA	CLCMG100
<b>CL085AP/-2</b>	Purified	250µg/500µg	1.0 mg/ml	CLCMG100
<b>CL085B/-5</b>	Biotin	100µg/500µg	0.1 mg/ml	CLCMG115
<b>CL085F/-5</b>	FITC	100µg/500µg	0.1 mg/ml	CLCMG101
<b>CL085PE/-4</b>	PE	50µg/200µg	0.1 mg/ml	CLCMG104

Isotype: Mouse IgG1

**DESCRIPTION:**

Cedarlane's anti-rat CD62L monoclonal antibody recognizes rat leukocyte selectin (L-selectin). CD62L is expressed constitutively on leukocytes and is expressed by a subset of thymocytes, predominantly single positive CD4 or CD8 cells and a majority of lymph node cells in rats. CD62L binds well to O-glycans present on certain glycoforms of the mucins GlyCAM-1, CD34 and MAdCAM-1. CD62L is reported to be capable of transducing signals when cross-linked and has been shown to stimulate  $\beta_2$ -integrin-mediated adhesion when bound to soluble GlyCAM-1.

L-selectin expressing CD4<sup>+</sup>CD8<sup>-</sup> thymocytes were shown through adoptive transfer to protect rats from insulin-dependent diabetes. CD4<sup>+</sup>CD8<sup>-</sup> thymocytes must mature to the stage of L-selectin expression before they can mediate normal T cell function. [2] Sensitive detection systems may be required on some tissues as expression of rat CD62L is weak.

Applications include: Flow cytometry and ELISA [1].

**PRESENTATION:**

**Ascites:** Lyophilized

**Purified:** Purified IgG buffered in PBS and 0.02% NaN<sub>3</sub>. (Purified from ascitic fluid via Protein G Chromatography). For maximum recovery of contents, spin down tube before use.

**Biotin, FITC and PE:** Biotin/FITC/PE conjugated IgG buffered in PBS, 0.02% NaN<sub>3</sub> and EIA grade BSA as a stabilizing protein to bring total protein concentration to 4-5 mg/ml.

**STORAGE/STABILITY:**

Store **Ascites** at -20°C. For all other formats, store at 4°C. DO NOT FREEZE **PE** conjugates. For long term storage (**Purified, Biotin** and **FITC**), aliquot and freeze unused portion at -20°C in volumes appropriate for single usage. Avoid freeze/thaw cycles.

Visit our website for your local distributor.

**CEDARLANE**<sup>®</sup>



[www.cedarlanelabs.com](http://www.cedarlanelabs.com)

An ISO 9001:2000 and ISO 13485:2003  
registered company.

In CANADA: Toll Free: 1-800-268-5058

4410 Paletta Court, Burlington, ON L7L 5R2 ph: (289) 288-0001, fax: (289) 288-0020  
e-mail: [general@cedarlanelabs.com](mailto:general@cedarlanelabs.com)

In the USA: Toll Free: 1-800-721-1644

1210 Turrentine Street, Burlington, NC 27215 ph: (336) 513-5135, fax: (336) 513-5138  
e-mail: [service@cedarlanelabs.com](mailto:service@cedarlanelabs.com)

**SPECIFICATIONS:**

Clone: OX-85

Hybridoma Production:

Immunization: Immunogen: Recombinant rat L-selectin.  
Donor: BALB/c Spleen  
Fusion Partner: NSI/1

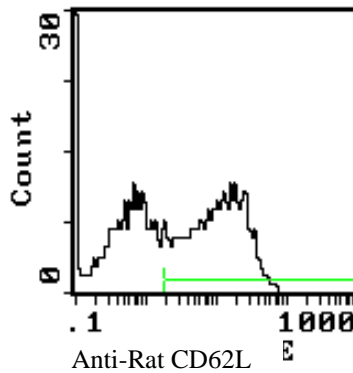
Specificity: Rat Leukocyte Common Antigen (L-selectin)

**TEST RESULTS:**

Tissue Distribution by Flow Cytometry Analysis:

Rat Strain: Wistar  
Cell Concentration:  $1 \times 10^6$  cells per test  
Antibody Concentration:  $1.0 \mu\text{g} / 10^6$  cells

<u>Cell population</u>	<u>Percentage of cells stained above control:</u>
Whole thymus	10.7%
CD4 <sup>+</sup> CD8 <sup>-</sup> T-cells	50.3%



Cell Source: CD4<sup>+</sup>CD8<sup>-</sup> T-cells

**N.B. Appropriate control samples should always be included in any labeling studies.**

**\* For optimal results in various applications, it is recommended that each investigator determine dilutions appropriate for individual use.**

**REFERENCES:**

1. Nicholson, M.W., Barclay, A.N., Singer, M.S., Rosen, S.D., and P.A. Van der Merwe. (1997) Affinity and Kinetic Analysis of L-Selectin (CD62L) binding to glycosylation-dependent Cell-Adhesion Molecule-1. *J. Biol. Chem.* 273: 763-770.
2. Seddon, B., Abdelhadi, S., Nicholson, M., and D. Mason. (1996) CD4<sup>+</sup>CD8<sup>-</sup> thymocytes that express L-selectin protect rats from diabetes upon adoptive transfer. *Eur. J. Immunol.* 26: 2702-2708.

**FOR RESEARCH USE ONLY**

® is a registered trademark of Cedarlane

