



# SZABO SCANDIC

Part of Europa Biosite

## Produktinformation



Forschungsprodukte & Biochemikalien



Zellkultur & Verbrauchsmaterial



Diagnostik & molekulare Diagnostik



Laborgeräte & Service

Weitere Information auf den folgenden Seiten!  
See the following pages for more information!



### Lieferung & Zahlungsart

siehe unsere [Liefer- und Versandbedingungen](#)

### Zuschläge

- Mindermengenzuschlag
- Trockeneiszuschlag
- Gefahrgutzuschlag
- Expressversand

### SZABO-SCANDIC HandelsgmbH

Quellenstraße 110, A-1100 Wien

T. +43(0)1 489 3961-0

F. +43(0)1 489 3961-7

[mail@szabo-scandic.com](mailto:mail@szabo-scandic.com)

[www.szabo-scandic.com](http://www.szabo-scandic.com)

[linkedin.com/company/szaboscandic](https://www.linkedin.com/company/szaboscandic) 

Technically  
Speaking

**CEDARLANE**<sup>®</sup>   
[www.cedarlanelabs.com](http://www.cedarlanelabs.com)

Conveniently Delivering You Today's Innovations  
for the Science of Tomorrow™

### Anti-Rat Erythrocytes Monoclonal Antibody

Catalogue#	Format	Size	Concentration	Isotype Control
<b>CL089AP</b>	Purified	250µg	1.0 mg/ml	CLCMG100
<b>CL089B</b>	Biotin	100µg	0.1 mg/ml	CLCMG115
<b>CL089B-5</b>	Biotin	500µg	0.1 mg/ml	CLCMG115
<b>CL089F</b>	FITC	100µg	0.1 mg/ml	CLCMG101
<b>CL089F-5</b>	FITC	500µg	0.1 mg/ml	CLCMG101

Isotype: Mouse IgG<sub>1</sub>

#### **DESCRIPTION:**

Cedarlane's anti-rat erythrocyte monoclonal antibody recognizes rat erythrocytes. This antibody has also been reported to label rat neutrophils, erythrocyte stem cells and 50% bone marrow.

#### **PRESENTATION:**

**Purified:** Purified IgG buffered in PBS and 0.02% NaN<sub>3</sub>. (Purified from ascitic fluid via Protein G Chromatography). For maximum recovery of contents, spin down tube before use.

**Biotin and FITC:** Biotin/FITC conjugated IgG buffered in PBS, 0.02% NaN<sub>3</sub> and EIA grade BSA as a stabilizing protein to bring total protein concentration to 4-5 mg/ml.

#### **STORAGE/STABILITY:**

For all formats, store at 4°C. For long term storage (**Purified, Biotin, FITC**), aliquot and freeze unused portion at -20°C in volumes appropriate for single usage. Avoid freeze/thaw cycles.

#### **APPLICATION:**

This antibody is suitable for use in Flow Cytometry.

#### **SPECIFICATIONS:**

Clone: MRC OX-83

Visit our website for your local distributor.

**CEDARLANE**<sup>®</sup> 

[www.cedarlanelabs.com](http://www.cedarlanelabs.com)

An ISO 9001:2000 and ISO 13485:2003  
registered company.

**In CANADA: Toll Free: 1-800-268-5058**

4410 Paletta Court, Burlington, ON L7L 5R2 ph: (289) 288-0001, fax: (289) 288-0020  
e-mail: [general@cedarlanelabs.com](mailto:general@cedarlanelabs.com)

**In the USA: Toll Free: 1-800-721-1644**

1210 Turrentine Street, Burlington, NC 27215 ph: (336) 513-5135, fax: (336) 513-5138  
e-mail: [service@cedarlanelabs.com](mailto:service@cedarlanelabs.com)

Hybridoma Production:

Immunization: Immunogen: Unknown  
Donor: BALB/c Spleen  
Fusion Partner: NS1

Specificity: Rat Erythrocytes

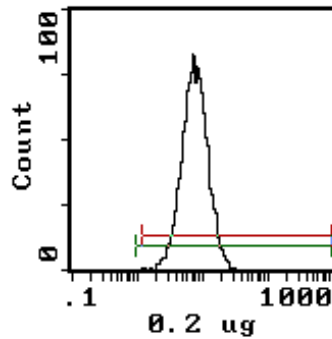
**TEST RESULTS:**

Tissue Distribution by Flow Cytometry Analysis:

Rat Strain: Wistar  
Cell Concentration:  $1 \times 10^6$  cells per tests  
Antibody Concentration Used:  $0.2 \mu\text{g}/10^6$  cells

Cell Source  
Erythrocytes

Percentage of cells stained above control:  
99.8%



Rat Erythrocytes

**N.B. Appropriate control samples should always be included in any labeling studies.**

**\* For optimal results in various applications, it is recommended that each investigator determine dilutions appropriate for individual use.**

**FOR RESEARCH USE ONLY**  
® is a registered trademark of Cedarlane