



SZABO SCANDIC

Part of Europa Biosite

Produktinformation



Forschungsprodukte & Biochemikalien



Zellkultur & Verbrauchsmaterial



Diagnostik & molekulare Diagnostik



Laborgeräte & Service

Weitere Information auf den folgenden Seiten!
See the following pages for more information!



Lieferung & Zahlungsart

siehe unsere [Liefer- und Versandbedingungen](#)

Zuschläge

- Mindermengenzuschlag
- Trockeneiszuschlag
- Gefahrgutzuschlag
- Expressversand

SZABO-SCANDIC HandelsgmbH

Quellenstraße 110, A-1100 Wien

T. +43(0)1 489 3961-0

F. +43(0)1 489 3961-7

mail@szabo-scandic.com

www.szabo-scandic.com

[linkedin.com/company/szaboscandic](https://www.linkedin.com/company/szaboscandic) 

Technically
Speaking

CEDARLANE[®] 
www.cedarlanelabs.com

Conveniently Delivering You Today's Innovations
for the Science of Tomorrow™

Anti-Rat Erythrocytes Monoclonal Antibody

Catalogue#	Format	Size	Concentration	Isotype Control
CL089AP	Purified	200 µg	1.0 mg/ml	CLCMG100
CL089B/-5	Biotin	100 µg/500 µg	0.1 mg/ml	CLCMG115
CL089F/-5	FITC	100 µg/500 µg	0.1 mg/ml	CLCMG101

Isotype: Mouse IgG₁

DESCRIPTION:

Cedarlane's anti-rat erythrocyte monoclonal antibody recognizes rat erythrocytes. This antibody has also been reported to label rat neutrophils, erythrocyte stem cells and 50% bone marrow.

Applications include: Flow cytometry.

PRESENTATION:

Purified: Purified IgG buffered in PBS and 0.02% NaN₃. (Purified from ascitic fluid via Protein G Chromatography). For maximal recovery of contents, please quick-spin vial before opening.

Biotin and FITC: Biotin/FITC conjugated IgG buffered in PBS, 0.02% NaN₃ and EIA grade BSA as a stabilizing protein to bring total protein concentration to 4-5 mg/mL.

STORAGE/STABILITY:

For all formats, store at 4°C. For long term storage (**Purified, Biotin and FITC**), aliquot and freeze unused portion at -20°C in volumes appropriate for single usage. Avoid freeze/thaw cycles.

SPECIFICATIONS:

Clone: MRC OX-83

Hybridoma Production:

Immunization: Immunogen: Rat Erythrocytes

Donor: BALB/c Spleen

Fusion Partner: NS1

Specificity: Rat Erythrocytes (Ly-76)

Visit our website for your local distributor.

CEDARLANE[®] 

www.cedarlanelabs.com

An ISO 9001:2000 and ISO 13485:2003
registered company.

In CANADA: Toll Free: 1-800-268-5058

4410 Paletta Court, Burlington, ON L7L 5R2 ph: (289) 288-0001, fax: (289) 288-0020
e-mail: general@cedarlanelabs.com

In the USA: Toll Free: 1-800-721-1644

1210 Turrentine Street, Burlington, NC 27215 ph: (336) 513-5135, fax: (336) 513-5138
e-mail: service@cedarlanelabs.com

TEST RESULTS:

Tissue Distribution by Flow Cytometry Analysis:

Rat Strain: Fischer

Cell Concentration: 1×10^6 cells per test

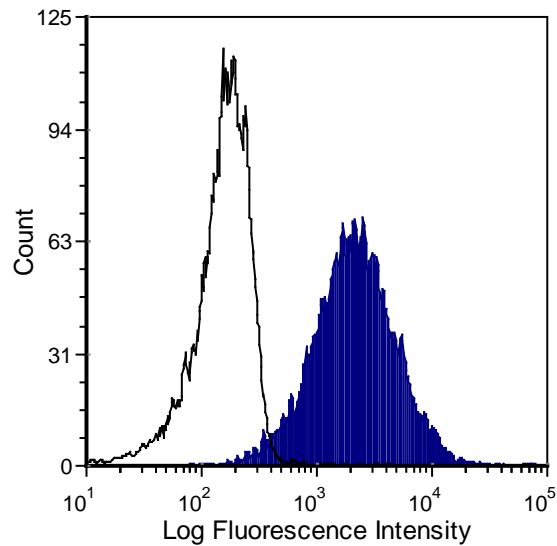
Antibody Concentration: $0.2 \mu\text{g}/10^6$ cells

Cell population

Erythrocytes

Percentage of cells stained above control:

99.8%



Fischer rat erythrocytes stained with anti-erythrocytes (clone: OX-83) (filled histogram) or mouse IgG1, isotype control (open histogram).

N.B. Appropriate control samples should always be included in any labeling studies.

*** For optimal results in various applications, it is recommended that each investigator determine dilutions appropriate for individual use.**

FOR RESEARCH USE ONLY

® is a registered trademark of Cedarlane