



SZABO SCANDIC

Part of Europa Biosite

Produktinformation



Forschungsprodukte & Biochemikalien



Zellkultur & Verbrauchsmaterial



Diagnostik & molekulare Diagnostik



Laborgeräte & Service

Weitere Information auf den folgenden Seiten!
See the following pages for more information!



Lieferung & Zahlungsart

siehe unsere [Liefer- und Versandbedingungen](#)

Zuschläge

- Mindermengenzuschlag
- Trockeneiszuschlag
- Gefahrgutzuschlag
- Expressversand

SZABO-SCANDIC HandelsgmbH

Quellenstraße 110, A-1100 Wien

T. +43(0)1 489 3961-0

F. +43(0)1 489 3961-7

mail@szabo-scandic.com

www.szabo-scandic.com

[linkedin.com/company/szaboscandic](https://www.linkedin.com/company/szaboscandic) 

Technically
Speaking

CEDARLANE[®]
www.cedarlanelabs.com



Conveniently Delivering You Today's Innovations
for the Science of Tomorrow™

**Anti-Rat CD152 (CTLA-4)
Monoclonal Antibody**

Catalogue#	Format	Size	Concentration	Isotype Control
CL090AP	Purified	250µg	1.0 mg/ml	CLCMG100
CL090LE	Low Endotoxin	500µg	1.0 mg/ml	CLCMG100
CL090B/-5	Biotin	100µg/500µg	0.1 mg/ml	CLCMG115
CL090F/-5	FITC	100µg/500µg	0.1 mg/ml	CLCMG101
CL090PE/-4	PE	50µg/200µg	0.1 mg/ml	CLCMG104

Isotype: Mouse IgG1

DESCRIPTION:

Cedarlane's anti-rat CD152 monoclonal antibody is specific for the cytotoxic T lymphocyte-associated protein 4 (CTLA-4), also called CD152. This antigen is known to be the receptor for B7 ligands (CD80 and CD86) present on antigen presenting cells. A subset of CD4 T cells expressing CD25 and CTLA-4 has been recognized as a potent suppressor cell population, counteracting autoimmunity and inflammation. These 'regulatory' T cells (Treg) which produce the anti-inflammatory cytokine interleukin-10 (IL-10) but not IL-2, are able to suppress the proliferation of costimulated CD25- negative indicator cells. The capacity of these naturally occurring regulatory T cells to suppress autoimmunity and inflammation suggests that therapies which activate and expand this subset could become extremely effective treatments for these immune-pathological disorders.

This clone has been tested in flow cytometry. In rats, the constitutive expression of CTLA-4 at the level detectable by flow cytometry is restricted to the CD25+ subset of CD4 T cells and thymocytes.

PRESENTATION:

Purified: Purified IgG buffered in PBS and 0.02% NaN₃. (Purified from ascitic fluid via Protein G Chromatography). For maximum recovery of contents, spin down tube before use.

LE: Purified Ig buffered in PBS, no preservative, 0.2µm sterile filtered. (Purified from cell culture supernatant via Protein G Chromatography)

Biotin, FITC and PE: Biotin/FITC/PE conjugated IgG buffered in PBS, 0.02% NaN₃ and EIA grade BSA as a stabilizing protein to bring total protein concentration to 4-5 mg/ml.

STORAGE/STABILITY:

For all formats, store at 4°C. DO NOT FREEZE **PE** conjugates. For long term storage (**Purified, LE, Biotin and FITC**), aliquot and freeze unused portion at -20°C in volumes appropriate for single usage. Avoid freeze/thaw cycles.

Continued Overleaf.....

Visit our website for your local distributor.

CEDARLANE[®]



www.cedarlanelabs.com

An ISO 9001:2000 and ISO 13485:2003
registered company.

In CANADA: **Toll Free: 1-800-268-5058**

4410 Paletta Court, Burlington, ON L7L 5R2 ph: (289) 288-0001, fax: (289) 288-0020
e-mail: general@cedarlanelabs.com

In the USA: **Toll Free: 1-800-721-1644**

1210 Turrentine Street, Burlington, NC 27215 ph: (336) 513-5135, fax: (336) 513-5138
e-mail: service@cedarlanelabs.com

SPECIFICATIONS:

Clone: WKH 203

Hybridoma Production:

Immunization: Immunogen: Purified rCTLA-4hlg fusion protein
Donor: BALB/c mice spleen cells
Fusion Partner: X63 Ag8.653 myeloma cells

Specificity: Rat CD152

TEST RESULTS:

Tissue Distribution by Flow Cytometry Analysis:

Rat Strain: Wistar

Cell Concentration: 1x10⁶ cells per test

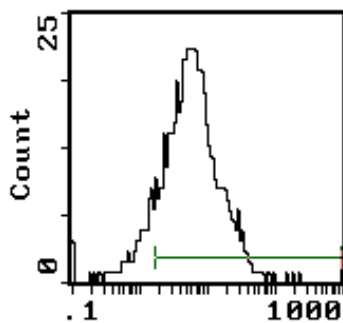
Antibody Concentration Used: 2.0 µg/10⁶ cells

* (T cells isolated with CL102 Cedarlane's Rat T Cell Recovery Column Kit)

Cell Source

Percentage of cells stained above control:

Lymph Node (on CD25+ cells)	73.1%
Spleen (on CD25+ cells)	87.3%
Thymus (on CD25+ cells)	76%



Cell Source: Spleen

N.B. Appropriate control samples should always be included in any labeling studies.

*** For optimal results in various applications, it is recommended that each investigator determine dilutions appropriate for individual use.**

REFERENCES:

1. Elflein, K., Rodriguez-Palmero, M., Kerkau, T., and T. Hunig. (2003) Immunobiology. 102, 1764 -1770. Rapid recovery from T lymphopenia by CD28 superagonist therapy.
2. Lin, C.-H., and T. Hunig. (2003) Eur. J. Immunol. 33, 626-638. Efficient expansion of regulatory T cells *in vitro* and *in vivo* with a CD28 superagonist.

FOR RESEARCH USE ONLY

® is a registered trademark of Cedarlane