



# SZABO SCANDIC

Part of Europa Biosite

## Produktinformation



Forschungsprodukte & Biochemikalien



Zellkultur & Verbrauchsmaterial



Diagnostik & molekulare Diagnostik



Laborgeräte & Service

Weitere Information auf den folgenden Seiten!  
See the following pages for more information!



### Lieferung & Zahlungsart

siehe unsere [Liefer- und Versandbedingungen](#)

### Zuschläge

- Mindermengenzuschlag
- Trockeneiszuschlag
- Gefahrgutzuschlag
- Expressversand

### SZABO-SCANDIC HandelsgmbH

Quellenstraße 110, A-1100 Wien

T. +43(0)1 489 3961-0

F. +43(0)1 489 3961-7

[mail@szabo-scandic.com](mailto:mail@szabo-scandic.com)

[www.szabo-scandic.com](http://www.szabo-scandic.com)

[linkedin.com/company/szaboscandic](https://www.linkedin.com/company/szaboscandic) 

Technically  
Speaking

**CEDARLANE**<sup>®</sup>   
[www.cedarlanelabs.com](http://www.cedarlanelabs.com)

Conveniently Delivering You Today's Innovations  
for the Science of Tomorrow™

**Anti-Rat IgG2b  
Monoclonal Antibody**

Catalogue#	Format	Size	Concentration	Isotype Control
CL094AP	Purified	250 µg	1.0 mg/ml	CLCMG100
CL094B	Biotin	100 µg	0.1 mg/ml	CLCMG115
CL094F	FITC	100 µg	0.1 mg/ml	CLCMG101
CL094PE	PE	50 µg	0.1 mg/ml	CLCMG104

Isotype: Mouse IgG<sub>1</sub>, k

**DESCRIPTION:**

Cedarlane's NORIg 7.16.2 monoclonal antibody was generated by immunizing mice with rat IgG. This particular clone was selected based on its' specificity for Rat IgG2b.

**PRESENTATION:**

**Purified:** Purified IgG buffered in PBS and 0.02% NaN<sub>3</sub>. (Purified from ascitic fluid via Protein G Chromatography). For maximum recovery of contents, spin down tube before use.

**Biotin, FITC, and PE:** Biotin/FITC/PE conjugated IgG buffered in PBS, 0.02% NaN<sub>3</sub> and EIA grade BSA as a stabilizing protein to bring total protein concentration to 4-5 mg/ml.

**STORAGE/STABILITY:**

For all formats, store at 4°C. **Do not freeze PE conjugate.** For long term storage (**Purified, Biotin, FITC**), aliquot and freeze unused portion at -20°C in volumes appropriate for single usage. Avoid freeze/thaw cycles.

**APPLICATION:**

This antibody is suitable for use in ELISA, Immunohistochemistry (Frozen), Flow Cytometry and Western Blot.

**SPECIFICATIONS:**

Clone: NORIg 7.16.2

Hybridoma Production:

Immunization: Immunogen: Rat IgG.  
Donor: BALB/c spleen  
Fusion Partner: NSO/U cell line

Visit our website for your local distributor.

**CEDARLANE**<sup>®</sup> 

[www.cedarlanelabs.com](http://www.cedarlanelabs.com)

An ISO 9001:2000 and ISO 13485:2003  
registered company.

In CANADA: Toll Free: 1-800-268-5058

4410 Paletta Court, Burlington, ON L7L 5R2 ph: (289) 288-0001, fax: (289) 288-0020  
e-mail: [general@cedarlanelabs.com](mailto:general@cedarlanelabs.com)

In the USA: Toll Free: 1-800-721-1644

1210 Turrentine Street, Burlington, NC 27215 ph: (336) 513-5135, fax: (336) 513-5138  
e-mail: [service@cedarlanelabs.com](mailto:service@cedarlanelabs.com)

Specificity: Rat IgG2b

### **TEST RESULTS:**

Tissue Distribution by Flow Cytometry Analysis:

Mouse Strain: Balb/c

Cell Concentration:  $1 \times 10^6$  cells per tests

Antibody Concentration Used:  $0.5 \mu\text{g}/10^6$  cells

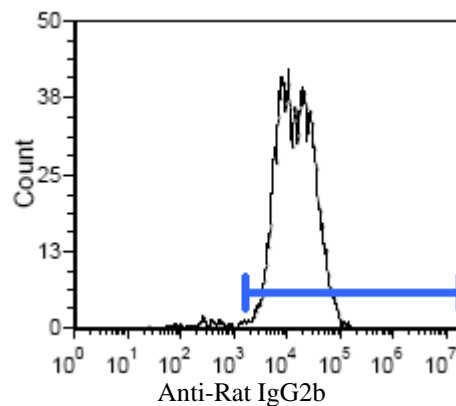
Cell Source

Whole Blood\*

Percentage of cells stained above control:

97.6%

\*(Whole Blood was initially stained with Cedarlane's Anti-Mouse Erythroid Cell (CL8926AP) and subsequently CL094 was used as the secondary antibody)



**N.B.** Appropriate control samples should always be included in any labeling studies.

\* For optimal results in various applications, it is recommended that each investigator determine dilutions appropriate for individual use.

### **REFERENCES:**

1. Aquel, N.M., Clark, M., Cobbold, S.P. and Waldmann H. 1984. **Immunohistological screening in the selection of monoclonal antibodies: the use of isotype-specific antiglobulins.** J. Immunol. Methods. 69(2): 207-214.
2. Benjamin R.J., Cobbold S.P., Clark M. and Waldmann H. 1986. **Tolerance to rat monoclonal antibodies. Implications for serotherapy.** J. Exp. Med. 163(6): 1539-1552.
3. Muller I., Cobbold S.P., Waldmann H. and Kaufmann S.H. 1987. **Impaired resistance to Mycobacterium tuberculosis infection after selective in vivo depletion of L3T4+ and Lyt-2+ T cells.** Infect. Immun. 55(9): 2037-2041.
4. Benjamin R.J. and Qin S. et al. 1988. **Mechanisms of monoclonal antibody-facilitated tolerance induction: a possible role for the CD4 (L3T4) and CD11a (LFA-1) molecules in self-non-self discrimination.** Europ. J. Immunol. 18(7): 1079-1088.
5. Epstein E. and Hardy R. et al. 1989. **Expression and function of HLA-A2. 1 in transgenic mice.** Europ. J. Immunol. 19(9): 1575-1583.
6. Cobbold S.P. and Rebello P. et al. 1990. **A simple method for measuring patient anti-globulin responses against isotypic or idiotypic determinants.** J. Immunol. Methods. 127(1): 19-24.
7. Leong L. and Le Rolle A. et al. 1999. **RT1-U: identification of a novel, active, class Ib alloantigen of the rat MHC.** J. Immunol. 162: 743-752.

**FOR RESEARCH USE ONLY**

® is a registered trademark of Cedarlane