



# SZABO SCANDIC

Part of Europa Biosite

## Produktinformation



Forschungsprodukte & Biochemikalien



Zellkultur & Verbrauchsmaterial



Diagnostik & molekulare Diagnostik



Laborgeräte & Service

Weitere Information auf den folgenden Seiten!  
See the following pages for more information!



### Lieferung & Zahlungsart

siehe unsere [Liefer- und Versandbedingungen](#)

### Zuschläge

- Mindermengenzuschlag
- Trockeneiszuschlag
- Gefahrgutzuschlag
- Expressversand

### SZABO-SCANDIC HandelsgmbH

Quellenstraße 110, A-1100 Wien

T. +43(0)1 489 3961-0

F. +43(0)1 489 3961-7

[mail@szabo-scandic.com](mailto:mail@szabo-scandic.com)

[www.szabo-scandic.com](http://www.szabo-scandic.com)

[linkedin.com/company/szaboscandic](https://www.linkedin.com/company/szaboscandic) 

Technically  
Speaking

**CEDARLANE**<sup>®</sup>  
[www.cedarlanelabs.com](http://www.cedarlanelabs.com)



Conveniently Delivering You Today's Innovations  
for the Science of Tomorrow™

**Anti-Mouse CD8a Antigen  
Monoclonal Antibody**

Catalogue#	Format	Size	Concentration	Isotype Control
CL168AP	Purified	200ug	1.0 mg/ml	CLCR2A00
CL168APC	APC	100ug	0.1 mg/ml	CLCR2A05
CL168B	Biotin	100ug	0.1 mg/ml	CLCR2A15
CL168F	FITC	100ug	0.1 mg/ml	CLCR2A01
CL168F-3	FITC	300ug	0.1 mg/ml	CLCR2A01
CL168PE	PE	50ug	0.1 mg/ml	CLCR2A04
CL168PE-3	PE	300ug	0.1 mg/ml	CLCR2A04
CL168TC	PE-Cy5	100ug	0.2 mg/ml	CLCR2A06

Isotype: Rat IgG<sub>2a</sub>

**DESCRIPTION:**

Cedarlane's anti-mouse CD8a antigen monoclonal antibody binds to a protein of approximately 30,000 daltons found on 85% of mouse thymocytes, mouse cytotoxic/suppressor T cells and their precursors. It does not bind to mouse helper/inducer T cells. This antibody is not strain specific and can be used with all commonly used laboratory mice.

This antibody is suitable for use in flow cytometry, *in vivo* assays and immunohistochemistry (Frozen and paraffin-embedded<sup>2</sup> sections).

**PRESENTATION:**

**Purified:** Purified IgG buffered in PBS and 0.02% NaN<sub>3</sub>. (Purified from ascitic fluid via Protein G Chromatography). For maximal recovery of contents, please quick-spin vial before opening.

**Biotin, FITC, PE, APC and TC:** Biotin/FITC/PE/APC/TC conjugated IgG buffered in PBS, 0.02% NaN<sub>3</sub> and EIA grade BSA as a stabilizing protein to bring total protein concentration to 4-5 mg/mL.

**STORAGE/STABILITY:**

For all formats, store at 4°C. DO NOT FREEZE APC, PE and TC conjugates. For long term storage (**Purified, Biotin and FITC**), aliquot and freeze unused portion at -20°C in volumes appropriate for single usage. Avoid freeze/thaw cycles.

**SPECIFICATIONS:**

Clone: CT-CD8a

Specificity: Mouse CD8a

Visit our website for your local distributor.

**CEDARLANE**<sup>®</sup>



[www.cedarlanelabs.com](http://www.cedarlanelabs.com)

An ISO 9001:2000 and ISO 13485:2003  
registered company.

In CANADA: Toll Free: 1-800-268-5058

4410 Paletta Court, Burlington, ON L7L 5R2 ph: (289) 288-0001, fax: (289) 288-0020  
e-mail: [general@cedarlanelabs.com](mailto:general@cedarlanelabs.com)

In the USA: Toll Free: 1-800-721-1644

1210 Turrentine Street, Burlington, NC 27215 ph: (336) 513-5135, fax: (336) 513-5138  
e-mail: [service@cedarlanelabs.com](mailto:service@cedarlanelabs.com)

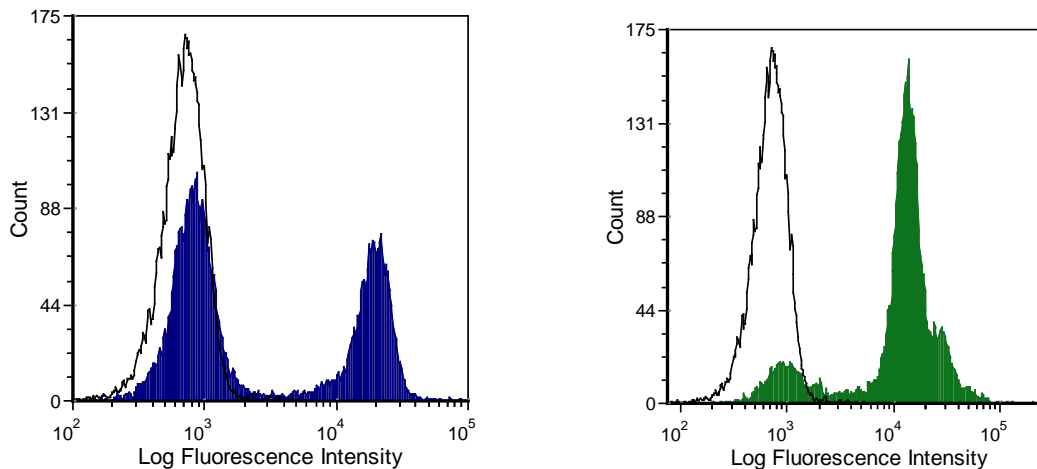
## **TEST RESULTS:**

### Tissue Distribution by Flow Cytometry Analysis:

Mouse Strain: C57BL/6

Cell Concentration:  $1 \times 10^6$  cells per tests

Antibody Concentration Used:  $1.0 \mu\text{g}/10^6$  cells



C57BL/6 mouse splenic T-cells (left) or thymocytes (right) were stained with anti-CD8a (clone: CT-CD8a) (filled histogram) or rat IgG2a isotype control (open histogram).

**N.B. Appropriate control samples should always be included in any labeling studies.**

**\* For optimal results in various applications, it is recommended that each investigator determine dilutions appropriate for individual use.**

## **REFERENCES:**

1. Tomonari, K. and Spencer, S. 1990 Epitope-specific binding of CD8 regulates activation of T cells and induction of cytotoxicity. *International Immunology* 2(12):1189-1194.
2. Whiteland, Joanne L., et al. 1995 Immunohistochemical detection of T-cell subsets and other leukocytes in paraffin-embedded rat and mouse tissues with monoclonal antibodies. *Journal of Histochemistry & Cytochemistry* 43.3: 313-320.

**FOR RESEARCH USE ONLY**

® is a registered trademark of Cedarlane Laboratories Ltd.