



SZABO SCANDIC

Part of Europa Biosite

Produktinformation



Forschungsprodukte & Biochemikalien



Zellkultur & Verbrauchsmaterial



Diagnostik & molekulare Diagnostik



Laborgeräte & Service

Weitere Information auf den folgenden Seiten!
See the following pages for more information!



Lieferung & Zahlungsart

siehe unsere [Liefer- und Versandbedingungen](#)

Zuschläge

- Mindermengenzuschlag
- Trockeneiszuschlag
- Gefahrgutzuschlag
- Expressversand

SZABO-SCANDIC HandelsgmbH

Quellenstraße 110, A-1100 Wien

T. +43(0)1 489 3961-0

F. +43(0)1 489 3961-7

mail@szabo-scandic.com

www.szabo-scandic.com

[linkedin.com/company/szaboscandic](https://www.linkedin.com/company/szaboscandic) 

Technically
Speaking

CEDARLANE[®]
www.cedarlanelabs.com



Conveniently Delivering You Today's Innovations
for the Science of Tomorrow™

**Anti-Mouse CD8a Antigen
Monoclonal Antibody**

Catalogue#	Format	Size	Concentration	Isotype Control
CL168AP	Purified	200ug	1.0 mg/ml	CLCR2A00
CL168APC	APC	100ug	0.1 mg/ml	CLCR2A05
CL168B	Biotin	100ug	0.1 mg/ml	CLCR2A15
CL168F	FITC	100ug	0.1 mg/ml	CLCR2A01
CL168F-3	FITC	300ug	0.1 mg/ml	CLCR2A01
CL168PE	PE	50ug	0.1 mg/ml	CLCR2A04
CL168PE-3	PE	300ug	0.1 mg/ml	CLCR2A04
CL168TC	PE-Cy5	100ug	0.2 mg/ml	CLCR2A06

Isotype: Rat IgG_{2a}

DESCRIPTION:

Cedarlane's anti-mouse CD8a antigen monoclonal antibody binds to a protein of approximately 30,000 daltons found on 85% of mouse thymocytes, mouse cytotoxic/suppressor T cells and their precursors. It does not bind to mouse helper/inducer T cells. This antibody is not strain specific and can be used with all commonly used laboratory mice.

This antibody is suitable for use in flow cytometry, *in vivo* assays and immunohistochemistry (Frozen and paraffin-embedded² sections).

PRESENTATION:

Purified: Purified IgG buffered in PBS and 0.02% NaN₃. (Purified from ascitic fluid via Protein G Chromatography). For maximal recovery of contents, please quick-spin vial before opening.

Biotin, FITC, PE, APC and TC: Biotin/FITC/PE/APC/TC conjugated IgG buffered in PBS, 0.02% NaN₃ and EIA grade BSA as a stabilizing protein to bring total protein concentration to 4-5 mg/mL.

STORAGE/STABILITY:

For all formats, store at 4°C. DO NOT FREEZE APC, PE and TC conjugates. For long term storage (**Purified, Biotin and FITC**), aliquot and freeze unused portion at -20°C in volumes appropriate for single usage. Avoid freeze/thaw cycles.

SPECIFICATIONS:

Clone: CT-CD8a

Specificity: Mouse CD8a

Visit our website for your local distributor.

CEDARLANE[®]



www.cedarlanelabs.com

An ISO 9001:2000 and ISO 13485:2003
registered company.

In CANADA: Toll Free: 1-800-268-5058

4410 Paletta Court, Burlington, ON L7L 5R2 ph: (289) 288-0001, fax: (289) 288-0020
e-mail: general@cedarlanelabs.com

In the USA: Toll Free: 1-800-721-1644

1210 Turrentine Street, Burlington, NC 27215 ph: (336) 513-5135, fax: (336) 513-5138
e-mail: service@cedarlanelabs.com

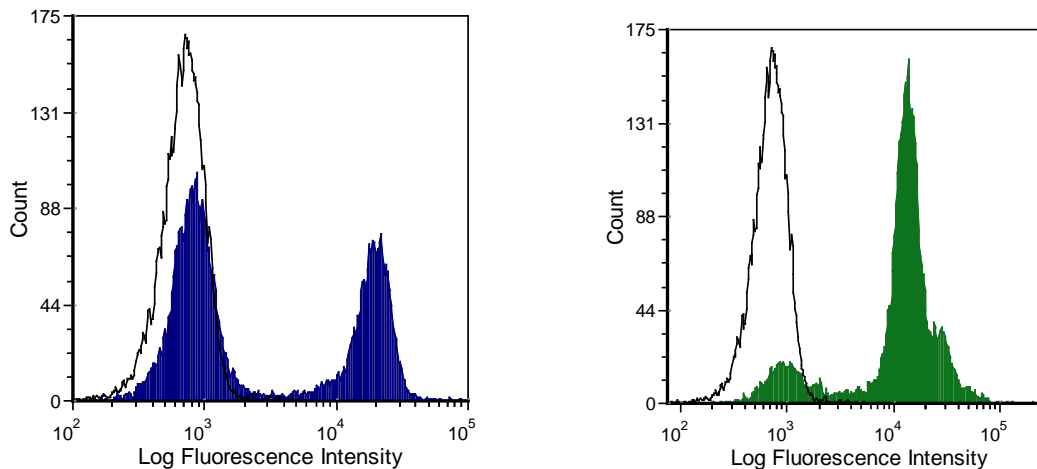
TEST RESULTS:

Tissue Distribution by Flow Cytometry Analysis:

Mouse Strain: C57BL/6

Cell Concentration: 1×10^6 cells per tests

Antibody Concentration Used: $1.0 \mu\text{g}/10^6$ cells



C57BL/6 mouse splenic T-cells (left) or thymocytes (right) were stained with anti-CD8a (clone: CT-CD8a) (filled histogram) or rat IgG2a isotype control (open histogram).

N.B. Appropriate control samples should always be included in any labeling studies.

*** For optimal results in various applications, it is recommended that each investigator determine dilutions appropriate for individual use.**

REFERENCES:

1. Tomonari, K. and Spencer, S. 1990 Epitope-specific binding of CD8 regulates activation of T cells and induction of cytotoxicity. *International Immunology* 2(12):1189-1194.
2. Whiteland, Joanne L., et al. 1995 Immunohistochemical detection of T-cell subsets and other leukocytes in paraffin-embedded rat and mouse tissues with monoclonal antibodies. *Journal of Histochemistry & Cytochemistry* 43.3: 313-320.

FOR RESEARCH USE ONLY

® is a registered trademark of Cedarlane Laboratories Ltd.