



# SZABO SCANDIC

Part of Europa Biosite

## Produktinformation



Forschungsprodukte & Biochemikalien



Zellkultur & Verbrauchsmaterial



Diagnostik & molekulare Diagnostik



Laborgeräte & Service

Weitere Information auf den folgenden Seiten!  
See the following pages for more information!



### Lieferung & Zahlungsart

siehe unsere [Liefer- und Versandbedingungen](#)

### Zuschläge

- Mindermengenzuschlag
- Trockeneiszuschlag
- Gefahrgutzuschlag
- Expressversand

### SZABO-SCANDIC HandelsgmbH

Quellenstraße 110, A-1100 Wien

T. +43(0)1 489 3961-0

F. +43(0)1 489 3961-7

[mail@szabo-scandic.com](mailto:mail@szabo-scandic.com)

[www.szabo-scandic.com](http://www.szabo-scandic.com)

[linkedin.com/company/szaboscandic](https://www.linkedin.com/company/szaboscandic) 

Technically  
Speaking

**CEDARLANE**<sup>®</sup>   
[www.cedarlanelabs.com](http://www.cedarlanelabs.com)

Conveniently Delivering You Today's Innovations  
for the Science of Tomorrow™

**Purified Anti-Human PI-6/SERPINB6 (Proteinase Inhibitor 6)  
Monoclonal Antibody**

**CL2806AP**  
**Lot#: 00710R1**

**DESCRIPTION:**

Proteinase Inhibitor B/SERPINB6 is part of the serpin family of proteins originally identified as a set of proteins able to inhibit chymotrypsin-like serine proteases. PI-6 is a 42 KDa cytoplasmic protein whose protein sequence most resembles that of the ovalbumin serpins. The highest levels of PI-6 can be seen in skeletal muscle, but it's also expressed in placenta, cardiac muscle, lung, liver, kidney, pancreas and inner ear hair cells. PI-6 may be involved in the regulation of serine proteinases present in the brain or extravasated from the blood. PI-9 may also play an important role in the inner ear in the protection against leakage of lysosomal content during stress. The loss of this protection results in cell death and sensorineural hearing loss.

**PRESENTATION:**

100 µg purified IgG buffered in 100 µl PBS and 0.05% NaN<sub>3</sub> (1 mg/ml). (Purified from bioreactor supernatant via Protein G Chromatography). For maximum recovery of contents, spin down tube before use.

**STORAGE/STABILITY:**

Store at + 4°C. For long term storage, aliquot and freeze unused portion at -20°C in volumes appropriate for single usage. Avoid freeze/thaw cycles.

**APPLICATION:**

This antibody is suitable for use in Flow Cytometry, ELISA, Immunoprecipitation and Immuno-fluorescence

**SPECIFICATIONS:**

Clone: 3A

Hybridoma Production:

Immunization: Mouse monoclonal antibodies raised against recombinant PI-6.

Specificity: This antibody is specific for human PI-6/SERPINB6.

Isotype: Mouse IgG2b,k

*Continued Overleaf.....*

Visit our website for your local distributor.

**CEDARLANE**<sup>®</sup> 

[www.cedarlanelabs.com](http://www.cedarlanelabs.com)

An ISO 9001:2000 and ISO 13485:2003  
registered company.

**In CANADA: Toll Free: 1-800-268-5058**

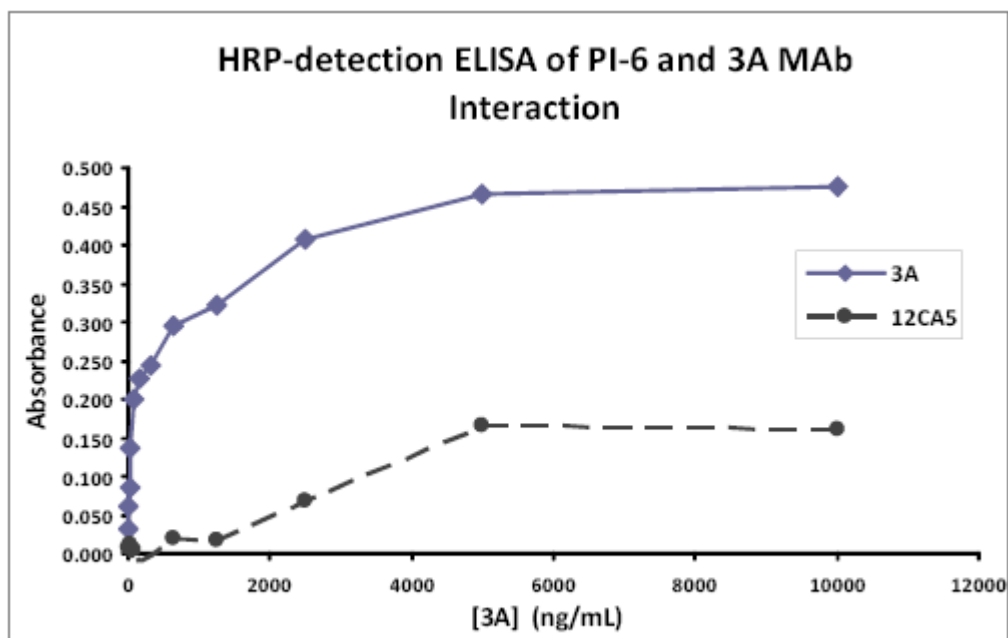
4410 Paletta Court, Burlington, ON L7L 5R2 ph: (289) 288-0001, fax: (289) 288-0020  
e-mail: [general@cedarlanelabs.com](mailto:general@cedarlanelabs.com)

**In the USA: Toll Free: 1-800-721-1644**

1210 Turrentine Street, Burlington, NC 27215 ph: (336) 513-5135, fax: (336) 513-5138  
e-mail: [service@cedarlanelabs.com](mailto:service@cedarlanelabs.com)

## **TEST RESULTS:**

### Direct ELISA Analysis:



3A MAb and isotype control MAb ELISA reactivity to PI-6 antigen coated plate (5µg/ml; 50µl/well). The secondary antibody was Sheep anti-mouse IgG Fc F(ab')<sub>2</sub> HRP.

**N.B.** Appropriate control samples should always be included in any labeling studies.

\* For optimal results in various applications, it is recommended that each investigator determine dilutions appropriate for individual use.

## **REFERENCES:**

Scott, F. L. *et al.* (1998) **Proteinase inhibitor 6 (PI-6) expression in human skin: induction of PI-6 and a PI-6/proteinase complex during keratinocyte differentiation.** *Exp. Cell Res.* 245: 263-271.

**FOR RESEARCH USE ONLY**  
® is a registered trademark of Cedarlane