



SZABO SCANDIC

Part of Europa Biosite

Produktinformation



Forschungsprodukte & Biochemikalien



Zellkultur & Verbrauchsmaterial



Diagnostik & molekulare Diagnostik



Laborgeräte & Service

Weitere Information auf den folgenden Seiten!
See the following pages for more information!



Lieferung & Zahlungsart

siehe unsere [Liefer- und Versandbedingungen](#)

Zuschläge

- Mindermengenzuschlag
- Trockeneiszuschlag
- Gefahrgutzuschlag
- Expressversand

SZABO-SCANDIC HandelsgmbH

Quellenstraße 110, A-1100 Wien

T. +43(0)1 489 3961-0

F. +43(0)1 489 3961-7

mail@szabo-scandic.com

www.szabo-scandic.com

[linkedin.com/company/szaboscandic](https://www.linkedin.com/company/szaboscandic) 

TECHNICALLY *Speaking*

Place your order with CEDARLANE® or your local distributor.

Please contact CEDARLANE® for lot specific information.

FITC Goat Anti-Rabbit Immunoglobulin Antiserum

CL6100F

LOT:

DESCRIPTION:

The antiserum is prepared by immunizing goats with rabbit IgG. The antiserum is specific for rabbit immunoglobulin. It does not react with rabbit serum proteins other than immunoglobulins. It does not cross-react with immunoglobulins of other species.

PRESENTATION:

2 mg FITC conjugated Ig buffered in PBS and 0.02% NaN₃

Antibody Concentration: 2.0 mg/ml

STORAGE/STABILITY:

Store at 4°C. For long term storage, aliquot and freeze unused portion at -20°C in volumes appropriate for single usage. Avoid freeze/thaw cycles. Avoid prolonged exposure to light.

For more information or to place an order please contact...

CEDARLANE®
LABORATORIES LIMITED



*toll free: 1-800-268-5058
in North America*

phone: (905) 878-8891 • fax: (905) 878-7800

5516 - 8th Line, R.R.#2, Hornby, Ontario, CANADA L0P 1E0

or visit our website for a list of our international distributors including contact information

website: www.cedarlanelabs.com • e-mail: info@cedarlanelabs.com

FLOW CYTOMETRY ANALYSIS:

Method:

1. Prepare a cell suspension in media A. For cell preparations, deplete the red blood cell population with Lympholyte® (cell separation medium).
2. Wash 2 times.
3. Resuspend the cells to a concentration of 2×10^7 cells/ml in media A. Add 50 μ l of this suspension to each tube (each tube will then contain 1×10^6 cells, representing 1 test).
4. To each tube, add recommended dilution of primary antibody.
5. Vortex the tubes to ensure thorough mixing of antibody and cells.
6. Incubate the tubes for 30 minutes at 4°C.
7. Wash 2 times at 4°C.
8. Add 100 μ l of **CL6100F** (FITC Goat anti-rabbit IgG) at 1/1000 dilution.
9. Incubate the tubes at 4°C for 30-60 minutes.
(It is recommended that the tubes are protected from light since most fluorochromes are light sensitive).
10. Wash 2 times at 4°C in media B.
11. Resuspend the cell pellet in 50 μ l ice cold media B.
12. Transfer to suitable tubes for flow cytometric analysis containing 15 μ l of propidium iodide at 0.5 mg/ml in PBS. This stains dead cells by intercalating in DNA.

Media:

- A. Phosphate buffered saline (pH 7.2) + 5% normal serum of host species + sodium azide (100 μ l of 2M sodium azide in 100 mls).
- B. Phosphate buffered saline (pH 7.2) + 0.5% Bovine serum albumin + sodium azide (100 μ l of 2M sodium azide in 100 mls).

Results:For Use as a Primary Antibody

Recommended Dilution: 0.5 µg per 10⁶ cells

For Use as a Secondary Antibody:

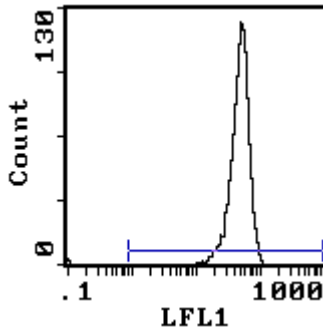
Mouse Strain: BALB/c

Cell Concentration : 1x10⁶ cells per tests

Primary Antibody: Rabbit Anti-mouse T cells

Primary Antibody Concentration: 1/1000

CL6100F Concentration: 1/1000



Cell Source: Thymus

Percentage of cells stained above control: 99.3 %

N.B. Appropriate control samples should always be included in any labeling studies.

*** For optimal results in various applications, it is recommended that each investigator determine dilutions appropriate for individual use.**

FOR RESEARCH USE ONLY

® is a Registered Trademark of Cedarlane Laboratories Limited.

Rev.EJ/06/08/00