



# SZABO SCANDIC

Part of Europa Biosite

## Produktinformation



Forschungsprodukte & Biochemikalien



Zellkultur & Verbrauchsmaterial



Diagnostik & molekulare Diagnostik



Laborgeräte & Service

Weitere Information auf den folgenden Seiten!  
See the following pages for more information!



### Lieferung & Zahlungsart

siehe unsere [Liefer- und Versandbedingungen](#)

### Zuschläge

- Mindermengenzuschlag
- Trockeneiszuschlag
- Gefahrgutzuschlag
- Expressversand

### SZABO-SCANDIC HandelsgmbH

Quellenstraße 110, A-1100 Wien

T. +43(0)1 489 3961-0

F. +43(0)1 489 3961-7

[mail@szabo-scandic.com](mailto:mail@szabo-scandic.com)

[www.szabo-scandic.com](http://www.szabo-scandic.com)

[linkedin.com/company/szaboscandic](https://www.linkedin.com/company/szaboscandic) 

Technically  
Speaking

**CEDARLANE**<sup>®</sup>  
[www.cedarlanelabs.com](http://www.cedarlanelabs.com)



Conveniently Delivering You Today's Innovations  
for the Science of Tomorrow™

**Anti-Mouse  $\alpha\beta$  TCR  
Monoclonal Antibody**

| Catalogue# | Format                       | Size                    | Concentration     | Isotype Control |
|------------|------------------------------|-------------------------|-------------------|-----------------|
| CL7200A    | Acities                      | 0.50ml                  | 1.0 mg/ml         | CLCHM00         |
| CL7200AP   | Purified                     | 250 $\mu$ g             | 1.0 mg/ml         | CLCHM01         |
| CL7200APC  | APC                          | 0.1mg                   | 0.1 mg/ml         | CLCHM05         |
| CL7200B/-3 | Biotin                       | 100 $\mu$ g/300 $\mu$ g | 0.1 mg/ml         | CLCHM15         |
| CL7200F/-3 | FITC                         | 100 $\mu$ g/300 $\mu$ g | 0.1 mg/ml         | CLCHM01         |
| CL7200PE   | PE                           | 50 $\mu$ g              | 50 $\mu$ g /0.5ml | CLCHM04         |
| CL7200PE-3 | PE                           | 300 $\mu$ g             | 300 $\mu$ g/0.5ml | CLCHM04         |
| CL7200AF4  | Alexa Fluor <sup>®</sup> 488 | 100 $\mu$ g             | 0.1 mg/ml         | N/A             |

Alexa Fluor<sup>®</sup> is a registered trademark of Life Technologies Corporation.

Isotype: Armenian Hamster IgG

**DESCRIPTION:**

Cedarlane's anti-mouse  $\alpha\beta$  T cell receptor monoclonal antibody reacts with the surface of all  $\alpha\beta$  TCR bearing cells and does not react with receptors on  $\gamma\delta$  TCR positive T cells. This monoclonal antibody when used in an immobilized form was able to activate all  $\alpha\beta$  TCR bearing T cell hybridomas tested to produce IL-2 (1).

Use of this antibody in conjunction with an anti-CD3 $\epsilon$  monoclonal antibody (Cedarlane's anti-CD3 $\epsilon$  mAb CL7202AP) allows for accurate measurements of the mutually exclusive sub-populations of  $\alpha\beta$  TCR and  $\gamma\delta$  TCR bearing T cells.

This clone has been reported to work in flow cytometry<sup>4</sup>, immunoprecipitation<sup>1</sup>, immunohistochemistry (frozen sections)<sup>6</sup> and Western Blotting<sup>5</sup>.

**PRESENTATION:**

**Purified:** Purified IgG buffered in PBS and 0.02% NaN<sub>3</sub>. (Purified from ascitic fluid via Protein G Chromatography). For maximum recovery of contents, spin down tube before use.

**Biotin, FITC, PE, APC and AF488:** Biotin/FITC/PE/APC/AF488 conjugated IgG buffered in PBS, 0.02% NaN<sub>3</sub> and EIA grade BSA as a stabilizing protein to bring total protein concentration to 4-5 mg/ml.

**STORAGE/STABILITY:**

For all formats, store at 4°C. DO NOT FREEZE PE, APC and AF488 conjugates. For long term storage (**Purified, Biotin, FITC**), aliquot and freeze unused portion at -20°C in volumes appropriate for single usage. Avoid freeze/thaw cycles.

Visit our website for your local distributor.

**CEDARLANE**<sup>®</sup>



[www.cedarlanelabs.com](http://www.cedarlanelabs.com)

An ISO 9001:2000 and ISO 13485:2003  
registered company.

In CANADA: Toll Free: 1-800-268-5058

4410 Paletta Court, Burlington, ON L7L 5R2 ph: (289) 288-0001, fax: (289) 288-0020  
e-mail: [general@cedarlanelabs.com](mailto:general@cedarlanelabs.com)

In the USA: Toll Free: 1-800-721-1644

1210 Turrentine Street, Burlington, NC 27215 ph: (336) 513-5135, fax: (336) 513-5138  
e-mail: [service@cedarlanelabs.com](mailto:service@cedarlanelabs.com)

## **SPECIFICATIONS:**

Clone: H57-597

### Hybridoma Production:

Immunization: Immunogen: Affinity purified D0 -11.10 TCR

Donor: Armenian Hamster

Fusion Partner: Mouse myeloma variant P3X63Ag.653

Specificity: Mouse  $\alpha\beta$  T Cell Receptor

Presentation: Purified Ig buffered in PBS with the addition of 0.02% NaN<sub>3</sub> (Purified from Ascitic fluid via Protein G Affinity Chromatography)

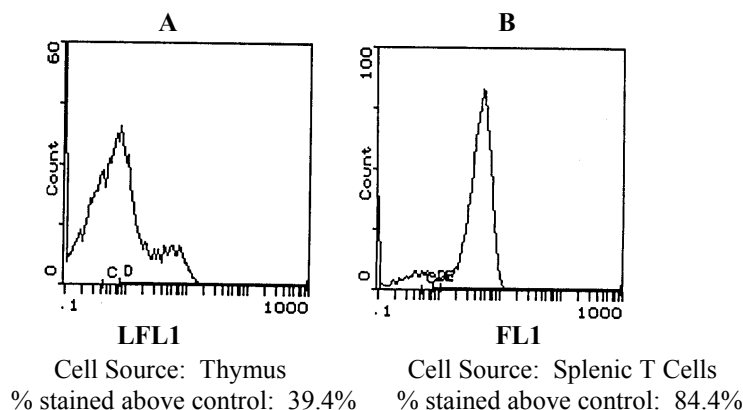
### Tissue Distribution by Flow Cytometry Analysis:

Mouse Strain: BALB/c

Cell Concentration: 1x10<sup>6</sup> cells per test

Antibody Concentration Used: 0.2  $\mu$ g/10<sup>6</sup> cells

\* (T cells isolated with CL101 - Cedarlane's Mouse T Cell Recovery Column Kit).



**N.B. Appropriate control samples should always be included in any labelling studies.**

**\* For optimal results in various applications, it is recommended that each investigator determine dilutions appropriate for individual use**

### Strain Distribution by Flow Cytometry Analysis:

Procedure: as above

Cell Concentration: 1x10<sup>6</sup> cells per test

Antibody Concentration used: 0.5  $\mu$ g/10<sup>6</sup> cells

Strains Tested: C57BL/6, CBA/J, AKR, BALB/c, C3H/He

Positive: C57BL/6, CBA/J, AKR, BALB/c, C3H/He

Negative: None

## **REFERENCES:**

1. Kubo, R.T. Born, W., Kappler, J.W., Marrack, P. and M. Pigeon. 1989. Characterization of a Monoclonal Antibody Which Detects All Murine  $\alpha\beta$  T Cell Receptors. *J. of Immunol.* **142**: 2736-2742.
2. Goodman, T., Lefrancois, L. 1989. Intraepithelial Lymphocytes. *J. of Exp. Med.* **170**: 1569-1581.
3. Gross, J. A., E. Callas and J. P. Allison. 1992. Identification and Distribution of the Costimulatory Receptor CD28 in the Mouse. *J. of Immunol.* **149**: 380-388.
4. Palathumpat, V. *et al.* 1992. Treatment of BCL<sub>1</sub> Leukemia by Transplantation of Low Density Fractions of Allogeneic Bone Marrow and Spleen Cells. *J. of Immunol.* **148**: 3319-3326.
5. Paliwal, V. *et al.* 1997. Recombinant Soluble  $\alpha\beta$  TCR Receptors Protect T Cells from Immune Suppression. *J. of Immunol.* **159**: 1718-1727
6. Skarstein, K. *et al.* 1994. Oligoclonality of T cells in salivary glands of autoimmune MRL/*lpr* mice. *Immunology.* **81**:497-501.

**FOR RESEARCH USE ONLY**

® is a registered trademark of Cedarlane Laboratories Ltd.