



# SZABO SCANDIC

Part of Europa Biosite

## Produktinformation



Forschungsprodukte & Biochemikalien



Zellkultur & Verbrauchsmaterial



Diagnostik & molekulare Diagnostik



Laborgeräte & Service

Weitere Information auf den folgenden Seiten!  
See the following pages for more information!



### Lieferung & Zahlungsart

siehe unsere [Liefer- und Versandbedingungen](#)

### Zuschläge

- Mindermengenzuschlag
- Trockeneiszuschlag
- Gefahrgutzuschlag
- Expressversand

### SZABO-SCANDIC HandelsgmbH

Quellenstraße 110, A-1100 Wien

T. +43(0)1 489 3961-0

F. +43(0)1 489 3961-7

[mail@szabo-scandic.com](mailto:mail@szabo-scandic.com)

[www.szabo-scandic.com](http://www.szabo-scandic.com)

[linkedin.com/company/szaboscandic](https://www.linkedin.com/company/szaboscandic) 

Technically  
Speaking

**CEDARLANE**<sup>®</sup>  
[www.cedarlanelabs.com](http://www.cedarlanelabs.com)



Conveniently Delivering You Today's Innovations  
for the Science of Tomorrow™

### Anti-Mouse $\gamma\delta$ TCR Monoclonal Antibody

Catalogue#	Format	Size	Concentration	Isotype Control
<b>CL7201A</b>	Purified	0.5ml	NA	HM00
<b>CL7201AP</b>	Purified	250 $\mu$ g	1.0 mg/ml	HM00
<b>CL7201NA</b>	Purified	1.0ml	1.0 mg/ml	HM00
<b>CL7201B/-3</b>	Biotin	100 $\mu$ g/300 $\mu$ g	0.1 mg/ml	HM15
<b>CL7201F/-3</b>	FITC	100 $\mu$ g /300 $\mu$ g	0.1 mg/ml	CLCHM01
<b>CL7201PE/-3</b>	PE	50 $\mu$ g /300 $\mu$ g	0.1 mg/ml	HM04

Isotype: Hamster IgG

#### **DESCRIPTION:**

Cedarlane's anti-mouse  $\gamma\delta$  T cell receptor monoclonal antibody reacts with the surface on all  $\gamma\delta$  TCR bearing cells and does not react with receptors on  $\alpha\beta$  TCR positive cells. It is thought that this clone may be specific for a determinant present on C $\delta$ <sup>7</sup>. The  $\gamma\delta$  T cell receptors are present on murine CD4<sup>+</sup>CD8<sup>-</sup> thymocytes, peripheral T cells, intestinal CD8<sup>+</sup> intraepithelial lymphocytes and Thy 1<sup>+</sup> dendritic epidermal cells in the skin<sup>1</sup>.

Use of this antibody in conjunction with an anti-CD3 monoclonal antibody (Cedarlane's anti-CD3 $\epsilon$  Monoclonal Antibody CL7202AP) allows for accurate measurements of the mutually exclusive sub-populations of  $\gamma\delta$  TCR and  $\alpha\beta$  TCR bearing T cells. Cedarlane's anti mouse  $\gamma\delta$  TCR monoclonal antibody has also been used successfully for the characterization of murine intraepithelial lymphocytes.

This clone is reported to work with frozen sections<sup>6</sup>.

#### **PRESENTATION:**

**Purified:** Purified IgG buffered in PBS and 0.02% NaN<sub>3</sub>. (Purified from ascitic fluid via Protein G Chromatography). For maximum recovery of contents, spin down tube before use.

**Biotin, FITC and PE:** Biotin/FITC/PE conjugated IgG buffered in PBS, 0.02% NaN<sub>3</sub> and EIA grade BSA as a stabilizing protein to bring total protein concentration to 4-5 mg/ml.

#### **STORAGE/STABILITY:**

For all formats, store at 4°C. DO NOT FREEZE **PE** conjugates. For long term storage (**Purified, Biotin** and **FITC**), aliquot and freeze unused portion at -20°C in volumes appropriate for single usage. Avoid freeze/thaw cycles.

Visit our website for your local distributor.

**CEDARLANE**<sup>®</sup>



[www.cedarlanelabs.com](http://www.cedarlanelabs.com)

An ISO 9001:2000 and ISO 13485:2003  
registered company.

In CANADA: Toll Free: 1-800-268-5058

4410 Paletta Court, Burlington, ON L7L 5R2 ph: (289) 288-0001, fax: (289) 288-0020  
e-mail: [general@cedarlanelabs.com](mailto:general@cedarlanelabs.com)

In the USA: Toll Free: 1-800-721-1644

1210 Turrentine Street, Burlington, NC 27215 ph: (336) 513-5135, fax: (336) 513-5138  
e-mail: [service@cedarlanelabs.com](mailto:service@cedarlanelabs.com)

## **SPECIFICATIONS:**

**Clone:** GL-3

### **Hybridoma Production:**

**Immunization:** Immunogen: C57BL/6J intraepithelial lymphocytes  
Donor: American Hamster

**Fusion Partner:** Murine myeloma cell line SP2/0

**Specificity:** Mouse  $\gamma\delta$  T cell receptor

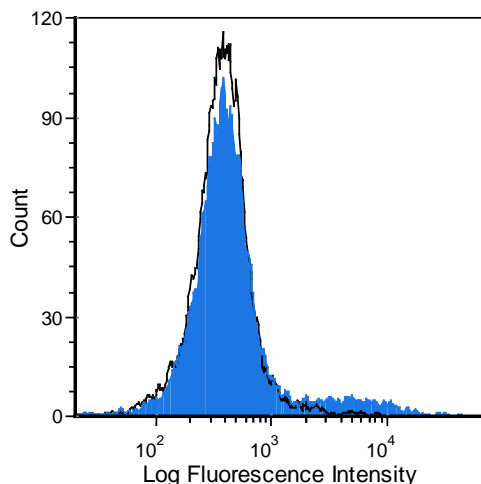
## **TEST RESULTS:**

**Mouse Strain:** C3H/He

**Cell Concentration :**  $1 \times 10^6$  cells per tests

<u>Cell Source</u>	<u>Percentage of cells stained above control:</u>
Thymus	10.20%
Splenic T Cells*	21.6%

\*(T cells isolated with CL101 - Cedarlane's Mouse T Cell Recovery Column Kit)



C3H/He mouse splenic T-cells were stained with anti-gamma/delta TCR (clone: GL3) (filled histogram) or Armenian hamster IgG isotype control (open histogram).

**N.B. Appropriate control samples should always be included in any labeling studies.**

**\* For optimal results in various applications, it is recommended that each investigator determine dilutions appropriate for individual use.**

## **REFERENCES:**

1. Sunderland,C.A., McMaster, W.R., and A.F. Williams. (1979) Eur. J.Immunol. 9, 155-159. Purification with monoclonal antibody of a predominant leukocyte-common antigen and glycoprotein from rat thymocytes.
2. Brown,W.R.A., Barclay,A.N., Sunderland,C.A. and A.F. Williams. (1981) Nature. 289, 1164-1177. Identification of a glycoprotein-like molecule at the cell surface of rat thymocytes.
3. Standring,R. and A.F. Williams. (1978) Biochim.Biophys. Acta. 508, 85-96. Glycoproteins and antigens of membranes prepared from rat thymocytes after lysis by shearing or with the detergent Tween-40.
4. Brown,W.R.A. and A.F. Williams. (1982) Immunology. 46, 713-726. Lymphocyte cell surface glycoproteins which bind to soybean and peanut lectins.
5. Woollet,G.R., Barclay,A.N., Puklavec,M. and A.F. Williams. (1985) Eur. J. Immunol. 15, 168-173. Molecular and antigenic heterogeneity of the rat leukocyte-common antigen from thymocytes and T and B lymphocytes.
6. Brouard, S., *et al.* (1999) J. of Immunol. 162, 3367-3377. T Cell repertoire alterations of vascularized xenografts.

**FOR RESEARCH USE ONLY**

® is a Registered Trademark of Cedarlane Laboratories Limited.