



# SZABO SCANDIC

Part of Europa Biosite

## Produktinformation



Forschungsprodukte & Biochemikalien



Zellkultur & Verbrauchsmaterial



Diagnostik & molekulare Diagnostik



Laborgeräte & Service

Weitere Information auf den folgenden Seiten!  
See the following pages for more information!



### Lieferung & Zahlungsart

siehe unsere [Liefer- und Versandbedingungen](#)

### Zuschläge

- Mindermengenzuschlag
- Trockeneiszuschlag
- Gefahrgutzuschlag
- Expressversand

### SZABO-SCANDIC HandelsgmbH

Quellenstraße 110, A-1100 Wien

T. +43(0)1 489 3961-0

F. +43(0)1 489 3961-7

[mail@szabo-scandic.com](mailto:mail@szabo-scandic.com)

[www.szabo-scandic.com](http://www.szabo-scandic.com)

[linkedin.com/company/szaboscandic](https://www.linkedin.com/company/szaboscandic) 

# TECHNICALLY Speaking

Place your order with CEDARLANE® or your local distributor.  
Please contact CEDARLANE® for lot specific information.

## Anti-Mouse DO11.10 TCR Monoclonal Antibody

Catalogue#	Format	Size	Concentration	Isotype Control
CL7214A	Ascites	1.0 ml	N/A	CLCMG2A00
CL7214AP	Purified	200 µg	1.0 mg/ml	CLCMG2A00
CL7214APC	APC	100 µg	0.1 mg/ml	CLCMG2A05
CL7214B	Biotin	100 µg	0.1 mg/ml	CLCMG2A15
CL7214F	FITC	100 µg	0.1 mg/ml	CLCMG2A01
CL7214PE	PE	50 µg	0.1 mg/ml	CLCMG2A04
CL7214TC	PE-Cy5	100 µg	0.1 mg/ml	CLCMG2A06

Isotype: Mouse IgG2a

### **DESCRIPTION:**

This monoclonal antibody binds the T-cell receptor (TCR) expressed on DO11.10 and DO11.10.24 murine T cell hybridomas, but not on any other T cell hybridomas tested.<sup>1</sup> The TCR expressed on DO11.10 recognizes an ovalbumin peptide in the context of I-A<sup>d</sup> major histocompatibility molecules.<sup>1,2</sup> The use of DO11.10 and clone KJ1-26 have proven to be instrumental in describing many of the intricate details of T cell immunity.<sup>3,4,5,6</sup> The DO11.10 T cell hybridoma is available from the laboratories of Drs. Kappler and Marrack.<sup>2,7</sup>

This antibody is suitable for use in flow cytometry.

### **PRESENTATION:**

**Purified:** Purified IgG buffered in PBS and 0.02% NaN<sub>3</sub>. (Purified from ascitic fluid via Protein G Chromatography).

**APC, Biotin, FITC, PE and TC:** Biotin/FITC/PE conjugated IgG buffered in PBS, 0.02% NaN<sub>3</sub> and EIA grade BSA as a stabilizing protein to bring total protein concentration to 4-5 mg/mL.

*Continued Overleaf.....*

For more information or to place an order please contact...

**CEDARLANE®**  
**LABORATORIES LIMITED**



**toll free: 1-800-268-5058**  
**in North America**

phone: (905) 878-8891 • fax: (905) 878-7800

5516 - 8th Line, R.R.#2, Hornby, Ontario, CANADA L0P 1E0

or visit our website for a list of our international distributors including contact information  
website: [www.cedarlanelabs.com](http://www.cedarlanelabs.com) • e-mail: [info@cedarlanelabs.com](mailto:info@cedarlanelabs.com)

**STORAGE/STABILITY:**

For all formats, store at 4°C. DO NOT FREEZE PE, APC or TC conjugates. For long term storage (Ascites, Purified, Biotin, FITC), aliquot and freeze unused portion at -20°C in volumes appropriate for single usage. Avoid freeze/thaw cycles.

**SPECIFICATIONS:**

Clone: KJ1-26

Hybridoma Production:

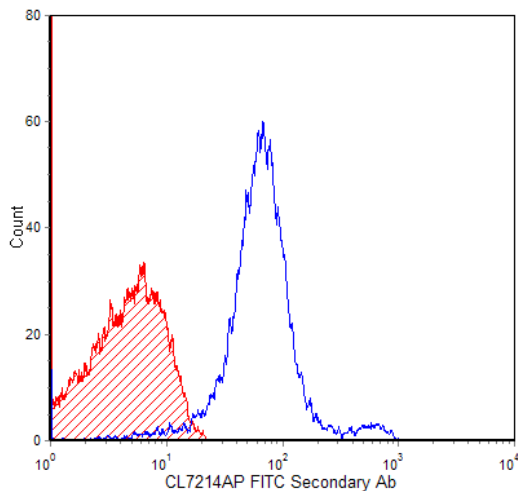
Immunization:  
Immunogen: T cell hybridoma, D011.10  
Donor: mouse ascites fluid

Specificity: Mouse D011.10 TCR

**TEST RESULTS:**

Tissue Distribution by Flow Cytometry Analysis:

Mouse Strain: BALB/c-[Tg] D011.10 TCR-[KO] RAG2  
Cell Concentration : 1x10<sup>6</sup> cells per tests  
Antibody Concentration Used: 0.5 µg/10<sup>6</sup> cells  
Isotypic Control (shaded): Purified Mouse IgG2a



Cell Source: Balb/c TCR Positive Thymocytes  
Percentage of cells stained above control: 96.7%

**N.B. Appropriate control samples should always be included in any labeling studies.**

**\* For optimal results in various applications, it is recommended that each investigator determine dilutions appropriate for individual use.**

*Continued Overleaf.....*

## **REFERENCES:**

1. Haskins, K. , R. Kubo, J. White, M. Pegeon, J. Kappler, and P. Murrack. 1983. The major histocompatibility complex-restricted antigen receptor on T cells. *J. Exp. Med.* 157:1149-69.
2. Murrack, P., R. Shimonkevitz, C. Hannum, K. Haskins, and J. Kappler. 1983. *J. Exp. Med.* 158:1635-46.
3. Murphy, K. M., A.B. Heimberger, and D.Y. Loh. 1990. *Science.* 250:1720-3.
4. Hsieh, C.S., A.B. Heimberger, J.S. Gold, A. O'Garra, and K. M. Murphy. 1992. *Proc. Natl. Acad. Sci. USA.* 89:6065-9.
5. Iwabuchi, K. , K. Nakayama, R. L. McCoy, F. Wang, T. Nishimura, S. Habu, K. M. Murphy, and D.Y. Loh. 1992. *Proc. Natl. Acad. Sci. USA.* 89:9000-4.
6. Hsieh, C. S. , S.E. Macatonia, C.S. Tripp, S.F. Walf, A. O'Garra, and K. M. Murphy. 1993. *Science.* 260:547-9.
7. Kappler, J.W., B. Skidmore, J. White, and P. Murrack. 1981. *J. Exp. Med.* 153:1198-214.

**FOR RESEARCH USE ONLY**

® is a registered trademark of Cedarlane Laboratories Ltd.