



SZABO SCANDIC

Part of Europa Biosite

Produktinformation



Forschungsprodukte & Biochemikalien



Zellkultur & Verbrauchsmaterial



Diagnostik & molekulare Diagnostik



Laborgeräte & Service

Weitere Information auf den folgenden Seiten!
See the following pages for more information!



Lieferung & Zahlungsart

siehe unsere [Liefer- und Versandbedingungen](#)

Zuschläge

- Mindermengenzuschlag
- Trockeneiszuschlag
- Gefahrgutzuschlag
- Expressversand

SZABO-SCANDIC HandelsgmbH

Quellenstraße 110, A-1100 Wien

T. +43(0)1 489 3961-0

F. +43(0)1 489 3961-7

mail@szabo-scandic.com

www.szabo-scandic.com

[linkedin.com/company/szaboscandic](https://www.linkedin.com/company/szaboscandic) 

Technically
Speaking

CEDARLANE[®] 
www.cedarlanelabs.com

Conveniently Delivering You Today's Innovations
for the Science of Tomorrow™

**Anti-Mouse Complement Component C1q
Monoclonal Antibody**

Catalogue#	Format	Size	Concentration	Isotype Control
CL7501AP	Purified	250ug	1.0 mg/ml	CLCR100
CL7501AP-BULK	Purified	1.0 mg	1.0 mg/ml	CLCR100
CL7501B	Biotin	100ug	0.1 mg/ml	CLCR115
CL7501F	FITC	100ug	0.1 mg/ml	CLCR101
CL7501PE	PE	50ug	0.1 mg/ml	CLCR104

Isotype: Rat IgG₁

DESCRIPTION:

Cedarlane's FITC Anti-Mouse Complement Component C1q Monoclonal Antibody detects the C1q portion of the macromolecular C1 complex. C1 exists in the serum and consists of C1q and 2 molecules each of C1r and C1s, held together in a complex (C1qr2s2) stabilized by Ca²⁺ ions. C1q specifically binds surface bound IgG and IgM to facilitate complement activation via the classical pathway.

This clone has been reported to work in immunofluorescence, staining of acetone fixed frozen sections, ELISA and Western Blotting (under reducing conditions, C1q falls apart into its three chains of 24, 25 and 28 kDa). The FITC conjugated antibody can be used for immunofluorescence and flow cytometry.

PRESENTATION:

Purified-Bulk: 5 mg/ml, no preservative added.

Purified: Purified IgG buffered in PBS and 0.02% NaN₃. (Purified from ascitic fluid via Protein G Chromatography). For maximum recovery of contents, spin down tube before use.

Biotin, FITC and PE: Biotin/FITC/PE conjugated IgG buffered in PBS, 0.02% NaN₃ and EIA grade BSA as a stabilizing protein to bring total protein concentration to 4-5 mg/ml.

STORAGE/STABILITY:

For all formats, store at 4°C. DO NOT FREEZE PE conjugates. For long term storage (**Purified, Biotin, and FITC**), aliquot and freeze unused portion at -20°C in volumes appropriate for single usage. Avoid freeze/thaw cycles.

Visit our website for your local distributor.

CEDARLANE[®] 

www.cedarlanelabs.com

An ISO 9001:2000 and ISO 13485:2003
registered company.

In CANADA: **Toll Free: 1-800-268-5058**

4410 Paletta Court, Burlington, ON L7L 5R2 ph: (289) 288-0001, fax: (289) 288-0020
e-mail: general@cedarlanelabs.com

In the USA: **Toll Free: 1-800-721-1644**

1210 Turrentine Street, Burlington, NC 27215 ph: (336) 513-5135, fax: (336) 513-5138
e-mail: service@cedarlanelabs.com

SPECIFICATIONS:

Clone: RmC7H8

Hybridoma Production:

Immunization:

Immunogen: Mouse thymocytes incubated with a rat IgG2b anti-murine Thy-1 (RmT1) and C57BL/6 serum (as a source for C1q)

Donor: Lou/c rat

Fusion Partner: Mouse myeloma cell line P3X63 Ag. 8.653

Specificity: Mouse Complement Component C1q

TEST RESULTS:

Tissue Distribution by Flow Cytometric Analysis:

Mouse strain: CBA/J

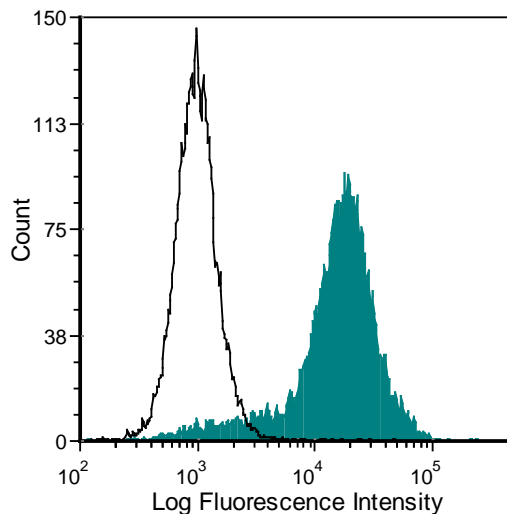
Cell Concentration: 1×10^6 cells per test

Antibody Concentration: $0.5 \mu\text{g}/10^6$ cells

Cell Source

CBA/J thymocytes incubated with anti-mouse Thy-1 (**CL2001**); then incubated with frozen mouse serum (**CL8000**).

Percentage of cells stained above control: 93.0%



CBA/J mouse thymocytes incubated with rabbit anti-mouse T cells + fresh mouse serum + 5 mM EDTA were stained with anti-C1q (clone: RmC7H8) (filled histogram) or rat IgG1 isotype control (open histogram).

N.B. Appropriate control samples should always be included in any labeling studies.

*** For optimal results in various applications, it is recommended that each investigator determine dilutions appropriate for individual use.**

REFERENCES:

1. Schuh R, Kremmer E, Ego E, Wasiliu M and Thierfelder S. 1992. Determination of monoclonal antibody specificity by immunoadsorption and western blotting. *J Immunol Methods*. July 31; 152(1): 59-67
2. Robson MG, Cook HT, Botto M, Taylor PR, Busso N, Salvi R, Pusey CD, Walport MJ and Davies KA. 2001. Accelerated nephrotoxic nephritis is exacerbated in C1q-deficient mice. *J Immunol* 166:6820
3. Trouw LA, Seelen MA, Duijs JMGJ, Benediktsson H, Van Kooten C and Daha MR. 2003. Glomerular deposition of C1q and anti-C1q antibodies in mice following injection of anti-mouse C1q antibodies. *Clin Exp Immunol* 132: 32
4. *Hybridoma* (1989) 8: 615-622