



SZABO SCANDIC

Part of Europa Biosite

Produktinformation



Forschungsprodukte & Biochemikalien



Zellkultur & Verbrauchsmaterial



Diagnostik & molekulare Diagnostik



Laborgeräte & Service

Weitere Information auf den folgenden Seiten!
See the following pages for more information!



Lieferung & Zahlungsart

siehe unsere [Liefer- und Versandbedingungen](#)

Zuschläge

- Mindermengenzuschlag
- Trockeneiszuschlag
- Gefahrgutzuschlag
- Expressversand

SZABO-SCANDIC HandelsgmbH

Quellenstraße 110, A-1100 Wien

T. +43(0)1 489 3961-0

F. +43(0)1 489 3961-7

mail@szabo-scandic.com

www.szabo-scandic.com

[linkedin.com/company/szaboscandic](https://www.linkedin.com/company/szaboscandic) 

Technically
Speaking

CEDARLANE[®]
www.cedarlanelabs.com



Conveniently Delivering You Today's Innovations
for the Science of Tomorrow™

**Anti-Mouse Complement Component
C3 Monoclonal Antibody**

| Catalogue# | Format | Size | Concentration | Isotype Control |
|-------------------|------------------------------|--------|---------------|-----------------|
| CL7503AP | Purified | 250µg | 1.0 mg/ml | CLCR2A00 |
| CL7503AP-2 | Purified | 500µg | 1.0 mg/ml | CLCR2A00 |
| CL7503NA | Purified | 1.0mg | 1.0 mg/ml | CLCR2A00 |
| CL7503B | Biotin | 100µg | 0.1 mg/ml | CLCR2A15 |
| CL7503F | FITC | 100µg | 0.1 mg/ml | CLCR2A01 |
| CL7503APC | APC | 100µg | 0.1 mg/ml | CLCR2A05 |
| CL7503PE | PE | 50µg | 0.1 mg/ml | CLCR2A04 |
| CL7503TRC | TRITC | 50µg | 0.1 mg/ml | CLCR2A04 |
| CL7503AF4 | Alexa Fluor [®] 488 | 100 µg | 0.1 mg/ml | N/A |

Alexa Fluor[®] is a registered trademark of Life Technologies Corporation.

Isotype: Rat IgG_{2a}

DESCRIPTION:

Cedarlane's Anti-Mouse Complement Component C3 monoclonal antibody reacts with mouse C3 as well as the breakdown products C3b, iC3b and C3dg. C3 is the most abundant complement protein in serum. C3 and its cleavage products, C3a and C3b, play a central role in the complement activation cascade. C3b forms an integral part of the C3 and C5 convertases as it promotes complement activation and the subsequent formation of the membrane attack complex. C3a possesses anaphylatoxic as well as various immunoregulatory properties.

Also, C3 has been implicated in developmental and non-inflammatory process such as hematopoiesis, skeletal and vascular development and reproduction.

Reported applications of this antibody include immunofluorescence^{2, 5}, ELISA⁴, Western blots¹, flow cytometry and immunohistochemistry^{1, 3} on acetone fixed frozen sections.

PRESENTATION:

Purified: Purified IgG buffered in PBS and 0.02% NaN₃. (Purified from ascitic fluid via Protein G Chromatography). For maximum recovery of contents, spin down tube before use.

APC, Biotin, FITC, PE, TRITC and AF488 conjugated IgG buffered in PBS, 0.02% NaN₃ and EIA grade BSA as a stabilizing protein to bring total protein concentration to 4-5 mg/ml.

No Azide: Purified Ig buffered in PBS, no preservative, 0.2µm sterile filtered.

STORAGE/STABILITY:

For all formats, store at 4°C. DO NOT FREEZE **APC, PE and AF488** conjugates. For long term storage (**Purified, Biotin, FITC, TRITC and No Azide**), aliquot and freeze unused portion at -20°C in volumes appropriate for single usage. Avoid freeze/thaw cycles.

Continued.....

Visit our website for your local distributor.

CEDARLANE[®]



www.cedarlanelabs.com

An ISO 9001:2015 and ISO 13485:2016
registered company.

In CANADA: **Toll Free: 1-800-268-5058**

4410 Paletta Court, Burlington, ON L7L 5R2 ph: (289) 288-0001, fax: (289) 288-0020
e-mail: general@cedarlanelabs.com

In the USA: **Toll Free: 1-800-721-1644**

1210 Turrentine Street, Burlington, NC 27215 ph: (336) 513-5135, fax: (336) 513-5138
e-mail: service@cedarlanelabs.com

SPECIFICATIONS:

Clone: RMC11H9

Hybridoma Production:

Immunization:

Immunogen: C57BL/6 thymocytes incubated with a rat IgG2b anti-murine Thy-1 (RmT1) and C57BL/6 serum (as a source for C3)

Donor: Lou/c rat spleen cells

Fusion Partner: Mouse myeloma cell line P3X63 Ag. 8.653

Specificity: Mouse Complement Component C3

TEST RESULTS:

Tissue Distribution by Flow Cytometry Analysis:

Mouse Strain: C₃H/He

Cell Concentration: 1x10⁶ cells per test

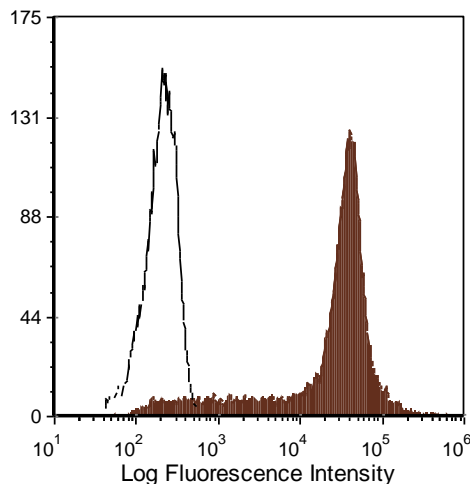
Antibody Concentration Used: 0.2 µg/10⁶ cells

Cell Source:

Thymocytes incubated with anti-mouse CD90 (CL8600AP), then incubated with fresh mouse serum (same strain).

Percentage of cells stained above control:

88%



C3H/He mouse thymocytes incubated with anti-mouse CD90 (Thy 1.2) (clone: 5a-8) and fresh mouse serum were stained with anti-mouse C3 (clone: RmC11H9) (filled histogram) or rat IgG2a isotype control (open histogram).

N.B. Appropriate control samples should always be included in any labeling studies.

*** For optimal results in various applications, it is recommended that each investigator determine dilutions appropriate for individual use.**

REFERENCES:

1. Kremmer, E et al. (1990). Hybridoma. 9 (4):309-17.
2. Robson, M et al. (2001). J. Immunol. 166(11): 6820-6828.
3. Mastellos et al. (2004). Molecular Immunology 40: 1213-1221.
4. Zhili Xu et al. (2008). J. Virology. 82(23): 11705-13.
5. Binstadt, B et al. (2009). PNAS. 106(39): 16758-63.

For Research Use Only
® is a Registered Trademark of Cedarlane