



SZABO SCANDIC

Part of Europa Biosite

Produktinformation



Forschungsprodukte & Biochemikalien



Zellkultur & Verbrauchsmaterial



Diagnostik & molekulare Diagnostik



Laborgeräte & Service

Weitere Information auf den folgenden Seiten!
See the following pages for more information!



Lieferung & Zahlungsart

siehe unsere [Liefer- und Versandbedingungen](#)

Zuschläge

- Mindermengenzuschlag
- Trockeneiszuschlag
- Gefahrgutzuschlag
- Expressversand

SZABO-SCANDIC HandelsgmbH

Quellenstraße 110, A-1100 Wien

T. +43(0)1 489 3961-0

F. +43(0)1 489 3961-7

mail@szabo-scandic.com

www.szabo-scandic.com

[linkedin.com/company/szaboscandic](https://www.linkedin.com/company/szaboscandic) 

Technically
Speaking

CEDARLANE[®] 
www.cedarlanelabs.com

Conveniently Delivering You Today's Innovations
for the Science of Tomorrow™

**Anti-Human CD25 (IL-2R α)
Monoclonal Antibody**

| Catalogue# | Format | Size | Concentration | Isotype Control |
|------------------|------------------------------|-------------|---------------|-----------------|
| CL7603AP | Purified | 200 μ g | 1.0 mg/ml | CLCR2B00 |
| CL7603APC | APC | 100 μ g | 0.1 mg/ml | CLCR2B05 |
| CL7603B | Biotin | 100 μ g | 0.1 mg/ml | CLCR2B15 |
| CL7603F | FITC | 100 μ g | 0.1 mg/ml | CLCR2B01 |
| CL7603PE | PE | 50 μ g | 0.1 mg/ml | CLCR2B04 |
| CL7603AF4 | Alexa Fluor [®] 488 | 100 μ g | 0.1 mg/ml | N/A |

Alexa Fluor[®] is a registered trademark of Life Technologies Corporation.

Isotype: Rat IgG_{2b}

DESCRIPTION:

Cedarlane's anti-Human CD25 monoclonal antibody specifically binds the human CD25 antigen. CD25 is the low-affinity interleukin 2 receptor alpha (IL-2R α). It has a molecular weight of 55 kDa, and is expressed by activated T cells and B cells. The designation HL on the clone name (YTH 906.9HL) indicates that it has been selected for loss of the original Y3 myeloma derived (non-specific) light chain.

PRESENTATION:

Purified: Purified IgG buffered in PBS and 0.02% NaN₃. (Purified from ascitic fluid via Protein G Chromatography). For maximum recovery of contents, spin down tube before use.

Biotin, FITC, APC, PE and AF488: Biotin/FITC/APC/PE/AF488 conjugated IgG buffered in PBS, 0.02% NaN₃ and EIA grade BSA as a stabilizing protein to bring total protein concentration to 4-5 mg/ml.

STORAGE/STABILITY:

For all formats, store at 4°C. DO NOT FREEZE **APC, PE and AF488** conjugates. For long term storage (**Purified, Biotin and FITC**), aliquot and freeze unused portion at -20°C in volumes appropriate for single usage. Avoid freeze/thaw cycles.

APPLICATION:

This antibody is suitable for use in Flow Cytometry.

Visit our website for your local distributor.

CEDARLANE[®] 

www.cedarlanelabs.com

An ISO 9001:2000 and ISO 13485:2003
registered company.

In CANADA: Toll Free: 1-800-268-5058

4410 Paletta Court, Burlington, ON L7L 5R2 ph: (289) 288-0001, fax: (289) 288-0020
e-mail: general@cedarlanelabs.com

In the USA: Toll Free: 1-800-721-1644

1210 Turrentine Street, Burlington, NC 27215 ph: (336) 513-5135, fax: (336) 513-5138
e-mail: service@cedarlanelabs.com

SPECIFICATIONS:

Clone: YTH 906.9HL

Hybridoma Production:

Immunization: Rat monoclonal antibody raised against activated human T lymphocytes

Fusion Partner: Spleen cells from an immunized DA rat were fused with the rat Y3/Ag.1.2.3 myeloma cell line.

Specificity: This antibody is specific for human CD25.

TEST RESULTS:

Tissue Distribution by Flow Cytometry Analysis:

Cell Concentration: 1×10^6 cells per tests

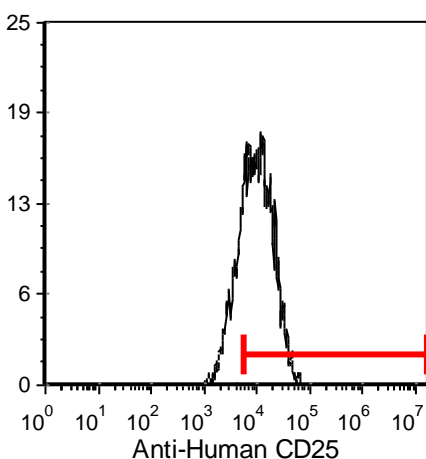
Antibody Concentration Used: $0.5 \mu\text{g}/10^6$ cells

Cell Source:

Human T-cell Blasts

Percentage of cells stained above control:

73.4%



Cell Source: Human T-cell Blasts

N.B. Appropriate control samples should always be included in any labeling studies.

*** For optimal results in various applications, it is recommended that each investigator determine dilutions appropriate for individual use.**

REFERENCES:

1. Hale G, Swirsky DM, Hayhoe FG, Waldmann H. **Effects of monoclonal anti-lymphocyte antibodies in vivo in monkeys and humans.** Mol Biol Med. Oct; 1 (3):321-34. 1983.
2. Hale G, Swirsky D, Waldmann H, Chan LC. **Reactivity of rat monoclonal antibody CAMPATH-1 with human leukaemia cells and its possible application for autologous bone marrow transplantation.** Br J Haematol. May; 60 (1):41-8. 1985.
3. Katz BZ, Romer L, Miyamoto S, Volberg T, Matsumoto K, Cukierman E, Geiger B, Yamada KM. **Targeting membrane-localized focal adhesion kinase to focal adhesions: roles of tyrosine phosphorylation and SRC family kinases.** J Biol Chem. Aug 1; 278 (31):29115-20. 2003.

FOR RESEARCH USE ONLY

® is a registered trademark of Cedarlane