



SZABO SCANDIC

Part of Europa Biosite

Produktinformation



Forschungsprodukte & Biochemikalien



Zellkultur & Verbrauchsmaterial



Diagnostik & molekulare Diagnostik



Laborgeräte & Service

Weitere Information auf den folgenden Seiten!
See the following pages for more information!



Lieferung & Zahlungsart

siehe unsere [Liefer- und Versandbedingungen](#)

Zuschläge

- Mindermengenzuschlag
- Trockeneiszuschlag
- Gefahrgutzuschlag
- Expressversand

SZABO-SCANDIC HandelsgmbH

Quellenstraße 110, A-1100 Wien

T. +43(0)1 489 3961-0

F. +43(0)1 489 3961-7

mail@szabo-scandic.com

www.szabo-scandic.com

[linkedin.com/company/szaboscandic](https://www.linkedin.com/company/szaboscandic) 

Technically
Speaking

CEDARLANE[®] 
www.cedarlanelabs.com

Conveniently Delivering You Today's Innovations
for the Science of Tomorrow™

**Anti-Human CD25 (IL-2R α)
Monoclonal Antibody**

Catalogue#	Format	Size	Concentration	Isotype Control
CL7603AP	Purified	200 μ g	1.0 mg/ml	CLCR2B00
CL7603APC	APC	100 μ g	0.1 mg/ml	CLCR2B05
CL7603B	Biotin	100 μ g	0.1 mg/ml	CLCR2B15
CL7603F	FITC	100 μ g	0.1 mg/ml	CLCR2B01
CL7603PE	PE	50 μ g	0.1 mg/ml	CLCR2B04
CL7603AF4	Alexa Fluor [®] 488	100 μ g	0.1 mg/ml	N/A

Alexa Fluor[®] is a registered trademark of Life Technologies Corporation.

Isotype: Rat IgG_{2b}

DESCRIPTION:

Cedarlane's anti-Human CD25 monoclonal antibody specifically binds the human CD25 antigen. CD25 is the low-affinity interleukin 2 receptor alpha (IL-2R α). It has a molecular weight of 55 kDa, and is expressed by activated T cells and B cells. The designation HL on the clone name (YTH 906.9HL) indicates that it has been selected for loss of the original Y3 myeloma derived (non-specific) light chain.

PRESENTATION:

Purified: Purified IgG buffered in PBS and 0.02% NaN₃. (Purified from ascitic fluid via Protein G Chromatography). For maximum recovery of contents, spin down tube before use.

Biotin, FITC, APC, PE and AF488: Biotin/FITC/APC/PE/AF488 conjugated IgG buffered in PBS, 0.02% NaN₃ and EIA grade BSA as a stabilizing protein to bring total protein concentration to 4-5 mg/ml.

STORAGE/STABILITY:

For all formats, store at 4°C. DO NOT FREEZE **APC, PE and AF488** conjugates. For long term storage (**Purified, Biotin** and **FITC**), aliquot and freeze unused portion at -20°C in volumes appropriate for single usage. Avoid freeze/thaw cycles.

APPLICATION:

This antibody is suitable for use in Flow Cytometry.

Visit our website for your local distributor.

CEDARLANE[®] 

www.cedarlanelabs.com

An ISO 9001:2000 and ISO 13485:2003
registered company.

In CANADA: **Toll Free: 1-800-268-5058**

4410 Paletta Court, Burlington, ON L7L 5R2 ph: (289) 288-0001, fax: (289) 288-0020
e-mail: general@cedarlanelabs.com

In the USA: **Toll Free: 1-800-721-1644**

1210 Turrentine Street, Burlington, NC 27215 ph: (336) 513-5135, fax: (336) 513-5138
e-mail: service@cedarlanelabs.com

SPECIFICATIONS:

Clone: YTH 906.9HL

Hybridoma Production:

Immunization: Rat monoclonal antibody raised against activated human T lymphocytes

Fusion Partner: Spleen cells from an immunized DA rat were fused with the rat Y3/Ag.1.2.3 myeloma cell line.

Specificity: This antibody is specific for human CD25.

TEST RESULTS:

Tissue Distribution by Flow Cytometry Analysis:

Cell Concentration: 1×10^6 cells per tests

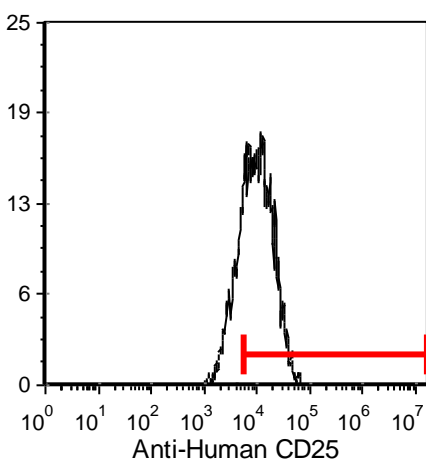
Antibody Concentration Used: $0.5 \mu\text{g}/10^6$ cells

Cell Source:

Human T-cell Blasts

Percentage of cells stained above control:

73.4%



Cell Source: Human T-cell Blasts

N.B. Appropriate control samples should always be included in any labeling studies.

*** For optimal results in various applications, it is recommended that each investigator determine dilutions appropriate for individual use.**

REFERENCES:

1. Hale G, Swirsky DM, Hayhoe FG, Waldmann H. **Effects of monoclonal anti-lymphocyte antibodies in vivo in monkeys and humans.** Mol Biol Med. Oct; 1 (3):321-34. 1983.
2. Hale G, Swirsky D, Waldmann H, Chan LC. **Reactivity of rat monoclonal antibody CAMPATH-1 with human leukaemia cells and its possible application for autologous bone marrow transplantation.** Br J Haematol. May; 60 (1):41-8. 1985.
3. Katz BZ, Romer L, Miyamoto S, Volberg T, Matsumoto K, Cukierman E, Geiger B, Yamada KM. **Targeting membrane-localized focal adhesion kinase to focal adhesions: roles of tyrosine phosphorylation and SRC family kinases.** J Biol Chem. Aug 1; 278 (31):29115-20. 2003.

FOR RESEARCH USE ONLY

® is a registered trademark of Cedarlane