



# SZABO SCANDIC

Part of Europa Biosite

## Produktinformation



Forschungsprodukte & Biochemikalien



Zellkultur & Verbrauchsmaterial



Diagnostik & molekulare Diagnostik



Laborgeräte & Service

Weitere Information auf den folgenden Seiten!  
See the following pages for more information!



### Lieferung & Zahlungsart

siehe unsere [Liefer- und Versandbedingungen](#)

### Zuschläge

- Mindermengenzuschlag
- Trockeneiszuschlag
- Gefahrgutzuschlag
- Expressversand

### SZABO-SCANDIC HandelsgmbH

Quellenstraße 110, A-1100 Wien

T. +43(0)1 489 3961-0

F. +43(0)1 489 3961-7

[mail@szabo-scandic.com](mailto:mail@szabo-scandic.com)

[www.szabo-scandic.com](http://www.szabo-scandic.com)

[linkedin.com/company/szaboscandic](https://www.linkedin.com/company/szaboscandic) 

Technically  
Speaking

**CEDARLANE**<sup>®</sup>   
[www.cedarlanelabs.com](http://www.cedarlanelabs.com)

Conveniently Delivering You Today's Innovations  
for the Science of Tomorrow™

**Anti-Human CD25 (IL-2R $\alpha$ )  
Monoclonal Antibody**

Catalogue#	Format	Size	Concentration	Isotype Control
<b>CL7603AP</b>	Purified	200 $\mu$ g	1.0 mg/ml	CLCR2B00
<b>CL7603APC</b>	APC	100 $\mu$ g	0.1 mg/ml	CLCR2B05
<b>CL7603B</b>	Biotin	100 $\mu$ g	0.1 mg/ml	CLCR2B15
<b>CL7603F</b>	FITC	100 $\mu$ g	0.1 mg/ml	CLCR2B01
<b>CL7603PE</b>	PE	50 $\mu$ g	0.1 mg/ml	CLCR2B04
<b>CL7603AF4</b>	Alexa Fluor <sup>®</sup> 488	100 $\mu$ g	0.1 mg/ml	N/A

Alexa Fluor<sup>®</sup> is a registered trademark of Life Technologies Corporation.

Isotype: Rat IgG<sub>2b</sub>

**DESCRIPTION:**

Cedarlane's anti-Human CD25 monoclonal antibody specifically binds the human CD25 antigen. CD25 is the low-affinity interleukin 2 receptor alpha (IL-2R $\alpha$ ). It has a molecular weight of 55 kDa, and is expressed by activated T cells and B cells. The designation HL on the clone name (YTH 906.9HL) indicates that it has been selected for loss of the original Y3 myeloma derived (non-specific) light chain.

**PRESENTATION:**

**Purified:** Purified IgG buffered in PBS and 0.02% NaN<sub>3</sub>. (Purified from ascitic fluid via Protein G Chromatography). For maximum recovery of contents, spin down tube before use.

**Biotin, FITC, APC, PE and AF488:** Biotin/FITC/APC/PE/AF488 conjugated IgG buffered in PBS, 0.02% NaN<sub>3</sub> and EIA grade BSA as a stabilizing protein to bring total protein concentration to 4-5 mg/ml.

**STORAGE/STABILITY:**

For all formats, store at 4°C. DO NOT FREEZE **APC, PE and AF488** conjugates. For long term storage (**Purified, Biotin and FITC**), aliquot and freeze unused portion at -20°C in volumes appropriate for single usage. Avoid freeze/thaw cycles.

**APPLICATION:**

This antibody is suitable for use in Flow Cytometry.

Visit our website for your local distributor.

**CEDARLANE**<sup>®</sup> 

[www.cedarlanelabs.com](http://www.cedarlanelabs.com)

An ISO 9001:2000 and ISO 13485:2003  
registered company.

In CANADA: **Toll Free: 1-800-268-5058**

4410 Paletta Court, Burlington, ON L7L 5R2 ph: (289) 288-0001, fax: (289) 288-0020  
e-mail: [general@cedarlanelabs.com](mailto:general@cedarlanelabs.com)

In the USA: **Toll Free: 1-800-721-1644**

1210 Turrentine Street, Burlington, NC 27215 ph: (336) 513-5135, fax: (336) 513-5138  
e-mail: [service@cedarlanelabs.com](mailto:service@cedarlanelabs.com)

## **SPECIFICATIONS:**

Clone: YTH 906.9HL

### Hybridoma Production:

Immunization: Rat monoclonal antibody raised against activated human T lymphocytes

Fusion Partner: Spleen cells from an immunized DA rat were fused with the rat Y3/Ag.1.2.3 myeloma cell line.

Specificity: This antibody is specific for human CD25.

## **TEST RESULTS:**

### Tissue Distribution by Flow Cytometry Analysis:

Cell Concentration:  $1 \times 10^6$  cells per tests

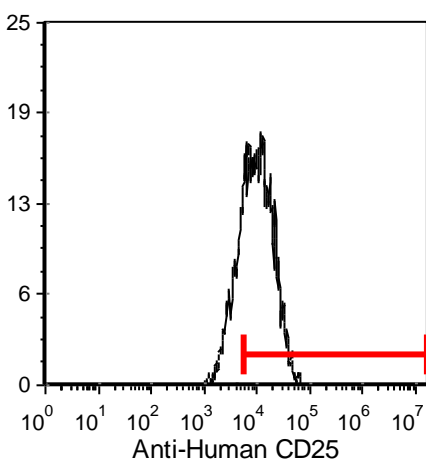
Antibody Concentration Used:  $0.5 \mu\text{g}/10^6$  cells

### Cell Source:

Human T-cell Blasts

### Percentage of cells stained above control:

73.4%



Cell Source: Human T-cell Blasts

**N.B.** Appropriate control samples should always be included in any labeling studies.

**\* For optimal results in various applications, it is recommended that each investigator determine dilutions appropriate for individual use.**

## **REFERENCES:**

1. Hale G, Swirsky DM, Hayhoe FG, Waldmann H. **Effects of monoclonal anti-lymphocyte antibodies in vivo in monkeys and humans.** Mol Biol Med. Oct; 1 (3):321-34. 1983.
2. Hale G, Swirsky D, Waldmann H, Chan LC. **Reactivity of rat monoclonal antibody CAMPATH-1 with human leukaemia cells and its possible application for autologous bone marrow transplantation.** Br J Haematol. May; 60 (1):41-8. 1985.
3. Katz BZ, Romer L, Miyamoto S, Volberg T, Matsumoto K, Cukierman E, Geiger B, Yamada KM. **Targeting membrane-localized focal adhesion kinase to focal adhesions: roles of tyrosine phosphorylation and SRC family kinases.** J Biol Chem. Aug 1; 278 (31):29115-20. 2003.

**FOR RESEARCH USE ONLY**

® is a registered trademark of Cedarlane