



# SZABO SCANDIC

Part of Europa Biosite

## Produktinformation



Forschungsprodukte & Biochemikalien



Zellkultur & Verbrauchsmaterial



Diagnostik & molekulare Diagnostik



Laborgeräte & Service

Weitere Information auf den folgenden Seiten!  
See the following pages for more information!



### Lieferung & Zahlungsart

siehe unsere [Liefer- und Versandbedingungen](#)

### Zuschläge

- Mindermengenzuschlag
- Trockeneiszuschlag
- Gefahrgutzuschlag
- Expressversand

### SZABO-SCANDIC HandelsgmbH

Quellenstraße 110, A-1100 Wien

T. +43(0)1 489 3961-0

F. +43(0)1 489 3961-7

[mail@szabo-scandic.com](mailto:mail@szabo-scandic.com)

[www.szabo-scandic.com](http://www.szabo-scandic.com)

[linkedin.com/company/szaboscandic](https://www.linkedin.com/company/szaboscandic) 

Technically  
Speaking

**CEDARLANE**<sup>®</sup>   
[www.cedarlanelabs.com](http://www.cedarlanelabs.com)

Conveniently Delivering You Today's Innovations  
for the Science of Tomorrow™

**Anti-Human Beta 2-microglobulin  
Monoclonal Antibody**

Catalogue#	Format	Size	Concentration	Isotype Control
<b>CL7604AP</b>	Purified	200 µg	1.0 mg/ml	CLCR2B00
<b>CL7604APC</b>	APC	100 µg	0.1 mg/ml	CLCR2B05
<b>CL7604B</b>	Biotin	100 µg	0.1 mg/ml	CLCR2B15
<b>CL7604F</b>	FITC	100 µg	0.1 mg/ml	CLCR2B01
<b>CL7604PE</b>	PE	50 µg	0.1 mg/ml	CLCR2B04
<b>CL7604AF4</b>	Alexa Fluor <sup>®</sup> 488	100 µg	0.1 mg/ml	N/A
<b>CL7604AF6</b>	Alexa Fluor <sup>®</sup> 647	100 µg	0.1 mg/ml	N/A

Alexa Fluor<sup>®</sup> is a registered trademark of Life Technologies Corporation.

Isotype: Rat IgG<sub>2b</sub>

**DESCRIPTION:**

Cedarlane's anti-Human Beta 2-microglobulin monoclonal antibody specifically binds to human Beta 2-microglobulin. Beta 2-microglobulin (B2M) is a component of MHC class 1 molecules, and is found on the surface of many nucleated cells, and in abundance on white blood cells. Detecting levels of B2M may be useful in monitoring pathologies such as multiple myeloma, kidney damage, and certain viral infections. In some pathological conditions, this protein can form amyloid fibrils through its beta pleated sheet structure.

**PRESENTATION:**

**Purified:** Purified IgG buffered in PBS and 0.02% NaN<sub>3</sub>. (Purified from ascitic fluid via Protein G Chromatography). For maximum recovery of contents, spin down tube before use.

**Biotin, FITC, APC, PE, AF488 and AF647:** Biotin/FITC/APC/PE/AF488/AF647 conjugated IgG buffered in PBS, 0.02% NaN<sub>3</sub> and EIA grade BSA as a stabilizing protein to bring total protein concentration to 4-5 mg/ml.

**STORAGE/STABILITY:**

For all formats, store at 4°C. DO NOT FREEZE APC, PE, AF488 and AF647 conjugates. For long term storage (**Purified, Biotin** and **FITC**), aliquot and freeze unused portion at -20°C in volumes appropriate for single usage. Avoid freeze/thaw cycles.

**APPLICATION:**

This antibody is suitable for use in Western Blot and Flow Cytometry.

*Continued....*

Visit our website for your local distributor.

**CEDARLANE**<sup>®</sup> 

[www.cedarlanelabs.com](http://www.cedarlanelabs.com)

An ISO 9001:2015 and ISO 13485:2016  
registered company.

In CANADA: **Toll Free: 1-800-268-5058**

4410 Paletta Court, Burlington, ON L7L 5R2 ph: (289) 288-0001, fax: (289) 288-0020  
e-mail: [general@cedarlanelabs.com](mailto:general@cedarlanelabs.com)

In the USA: **Toll Free: 1-800-721-1644**

1210 Turrentine Street, Burlington, NC 27215 ph: (336) 513-5135, fax: (336) 513-5138  
e-mail: [service@cedarlanelabs.com](mailto:service@cedarlanelabs.com)

**SPECIFICATIONS:**

Clone: YTH 470.5

Hybridoma Production:

Immunization: Rat monoclonal antibody raised against human lymphocytes.

Fusion Partner: Spleen cells from immunized DA rat were fused with cells of the Y3/Ag.1.2.3 myeloma cell line.

Specificity: This antibody is specific for human Beta 2-microglobulin.

**TEST RESULTS:**

Tissue Distribution by Flow Cytometry Analysis:

Cell Concentration:  $1 \times 10^6$  cells per tests

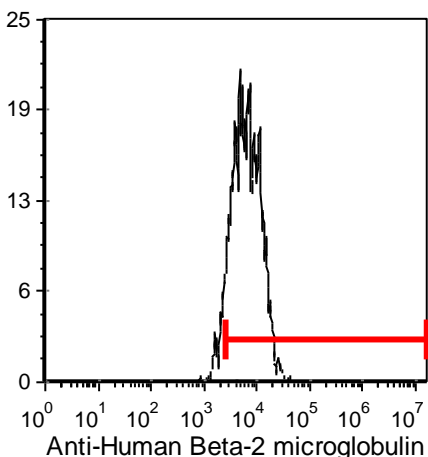
Antibody Concentration Used:  $0.5 \mu\text{g}/10^6$  cells

Cell Source:

Human PBLs

Percentage of cells stained above control:

90.8%



Cell Source: Human PBLs

**N.B. Appropriate control samples should always be included in any labeling studies.**

**\* For optimal results in various applications, it is recommended that each investigator determine dilutions appropriate for individual use.**

**REFERENCES:**

1. Bindon CI, Hale G, Waldmann H. **Importance of antigen specificity for complement-mediated lysis by monoclonal antibodies.** Eur J Immunol. Oct; 18(10):1507-14. 1988.
2. Lisowska-Myjak B. **Serum and urinary biomarkers of acute kidney injury.** Blood Purif. 29(4):357-65. 2010.

**FOR RESEARCH USE ONLY**

® is a registered trademark of Cedarlane