



# SZABO SCANDIC

Part of Europa Biosite

## Produktinformation



Forschungsprodukte & Biochemikalien



Zellkultur & Verbrauchsmaterial



Diagnostik & molekulare Diagnostik



Laborgeräte & Service

Weitere Information auf den folgenden Seiten!  
See the following pages for more information!



### Lieferung & Zahlungsart

siehe unsere [Liefer- und Versandbedingungen](#)

### Zuschläge

- Mindermengenzuschlag
- Trockeneiszuschlag
- Gefahrgutzuschlag
- Expressversand

### SZABO-SCANDIC HandelsgmbH

Quellenstraße 110, A-1100 Wien

T. +43(0)1 489 3961-0

F. +43(0)1 489 3961-7

[mail@szabo-scandic.com](mailto:mail@szabo-scandic.com)

[www.szabo-scandic.com](http://www.szabo-scandic.com)

[linkedin.com/company/szaboscandic](https://www.linkedin.com/company/szaboscandic) 

Technically  
Speaking

**CEDARLANE**<sup>®</sup>  
[www.cedarlanelabs.com](http://www.cedarlanelabs.com)



Conveniently Delivering You Today's Innovations  
for the Science of Tomorrow™

**Anti-Human CD45 (T200)  
Monoclonal Antibody**

Catalogue#	Format	Size	Concentration	Isotype Control
<b>CL7605AP</b>	Purified	200 µg	1.0 mg/ml	CLCR2A00
<b>CL7605AP-BULK</b>	Purified	1.0 mg	1.0 mg/ml	CLCR2A00
<b>CL7605APC</b>	APC	100 µg	0.1 mg/ml	CLCR2A05
<b>CL7605B</b>	Biotin	100 µg	0.1 mg/ml	CLCR2A15
<b>CL7605F</b>	FITC	100 µg	0.1 mg/ml	CLCR2A01
<b>CL7605PE</b>	PE	50 µg	0.1 mg/ml	CLCR2A04
<b>CL7605PE-CY7</b>	PE-Cy7	100 µg	0.1 mg/ml	CLCR2A12
<b>CL7605AF4</b>	Alexa Fluor <sup>®</sup> 488	100 µg	0.1 mg/ml	N/A
<b>CL7605AF6</b>	Alexa Fluor <sup>®</sup> 647	100 µg	0.1 mg/ml	N/A
<b>CL7605AF7</b>	Alexa Fluor <sup>®</sup> 700	100 µg	0.1 mg/ml	N/A

Alexa Fluor<sup>®</sup> is a registered trademark of Life Technologies Corporation.

Isotype: Rat IgG<sub>2a</sub>

**DESCRIPTION:**

Cedarlane's anti-Human CD45 monoclonal antibody specifically binds the human CD45 Leukocyte Common Antigen (T200). CD45 is a family of single-chain transmembrane glycoproteins that consists of at least four isoforms (220, 205, 190, 180 kDa). Anti-Human CD45 monoclonal antibody recognizes an epitope common to all known isoforms. CD45 is expressed on hematopoietic cell lines, but not mature red cells, and is not detected on differentiated cells of other tissues. The protein phosphatase activity of the intracellular portion of CD45 is involved in transmembrane signaling for regulation of various cellular functions. Antibody to CD45 is used to differentiate lymphomas from non-hematopoietic undifferentiated neoplasms.

**PRESENTATION:**

**Purified:** Purified IgG buffered in PBS and 0.02% NaN<sub>3</sub>. (Purified from ascitic fluid via Protein G Chromatography). For maximum recovery of contents, spin down tube before use.

For maximal recovery of contents, please quick-spin vial before opening.

**Biotin, FITC, APC, PE, PE-Cy7, AF488, AF647 and AF700:** Biotin/FITC/PE/PE-Cy7/APC/AF488/ AF647/AF700 conjugated IgG buffered in PBS, 0.02% NaN<sub>3</sub> and EIA grade BSA as a stabilizing protein to bring total protein concentration to 4-5 mg/ml.

*Continued Overleaf....*

Visit our website for your local distributor.

**CEDARLANE**<sup>®</sup>



[www.cedarlanelabs.com](http://www.cedarlanelabs.com)

An ISO 9001:2015 and ISO 13485:2016  
registered company.

In CANADA: Toll Free: 1-800-268-5058

4410 Paletta Court, Burlington, ON L7L 5R2 ph: (289) 288-0001, fax: (289) 288-0020  
e-mail: [general@cedarlanelabs.com](mailto:general@cedarlanelabs.com)

In the USA: Toll Free: 1-800-721-1644

1210 Turrentine Street, Burlington, NC 27215 ph: (336) 513-5135, fax: (336) 513-5138  
e-mail: [service@cedarlanelabs.com](mailto:service@cedarlanelabs.com)

### **STORAGE/STABILITY:**

For all formats, store at 4°C. DO NOT FREEZE APC, PE, PE-Cy7, AF488, AF647 and AF700 conjugates. For long term storage (**Purified, Biotin, FITC**), aliquot and freeze unused portion at -20°C in volumes appropriate for single usage. Avoid freeze/thaw cycles.

### **APPLICATION:**

This antibody is suitable for use in Western Blot, ICC/IF and Flow Cytometry.

### **SPECIFICATIONS:**

Clone: YAML 501.4

#### Hybridoma Production:

Immunization: Rat monoclonal antibody raised against acute myeloid leukemia cells of human origin.

Specificity: This antibody is specific for human CD45.

### **TEST RESULTS:**

#### Tissue Distribution by Flow Cytometry Analysis:

Cell Concentration: 1x10<sup>6</sup> cells per tests

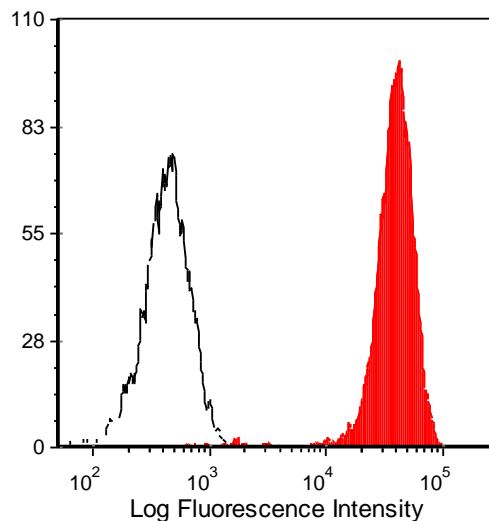
Antibody Concentration Used: 0.5 µg/10<sup>6</sup> cells

#### Cell Source:

Human PBLs

#### Percentage of cells stained above control:

88.5%



Human peripheral blood lymphocytes were stained with anti-CD45 (T200) (clone: YAML 501.4) (filled histogram) or Rat IgG2a isotype control (open histogram).

**N.B. Appropriate control samples should always be included in any labeling studies.**

**\* For optimal results in various applications, it is recommended that each investigator determine dilutions appropriate for individual use.**

### **REFERENCES:**

1. Aqel NM, Ball RY, Waldmann H, Mitchinson MJ. **Identification of macrophages and smooth muscle cells in human atherosclerosis using monoclonal antibodies.** J Pathol. 146(3):197-204, 1985.
2. Johnson P, Greenbaum L, Bottomly K, Trowbridge IS. **Identification of the alternatively spliced exons of murine CD45 (T200) required for reactivity with B220 and other T200-restricted antibodies.** J Exp Med. Mar 1; 169 (3):1179-84. 1989.
3. Streuli M, Hall LR, Saga Y, Schlossman SF, Saito H. **Differential usage of three exons generates at least five different mRNAs encoding human leukocyte common antigens.** J Exp Med. Nov 1; 166 (5):1548-66. 1987.
4. Hale G, Clark M, Waldmann H. **Therapeutic potential of rat monoclonal antibodies: isotype specificity of antibody-dependent cell-mediated cytotoxicity with human lymphocytes.** J Immunol. May; 134(5):3056-61. 1985.

**FOR RESEARCH USE ONLY**

® is a registered trademark of Cedarlane