



SZABO SCANDIC

Part of Europa Biosite

Produktinformation



Forschungsprodukte & Biochemikalien



Zellkultur & Verbrauchsmaterial



Diagnostik & molekulare Diagnostik



Laborgeräte & Service

Weitere Information auf den folgenden Seiten!
See the following pages for more information!



Lieferung & Zahlungsart

siehe unsere [Liefer- und Versandbedingungen](#)

Zuschläge

- Mindermengenzuschlag
- Trockeneiszuschlag
- Gefahrgutzuschlag
- Expressversand

SZABO-SCANDIC HandelsgmbH

Quellenstraße 110, A-1100 Wien

T. +43(0)1 489 3961-0

F. +43(0)1 489 3961-7

mail@szabo-scandic.com

www.szabo-scandic.com

[linkedin.com/company/szaboscandic](https://www.linkedin.com/company/szaboscandic) 

Technically
Speaking

CEDARLANE[®]
www.cedarlanelabs.com



Conveniently Delivering You Today's Innovations
for the Science of Tomorrow™

**Anti-Human CD45 (T200)
Monoclonal Antibody**

Catalogue#	Format	Size	Concentration	Isotype Control
CL7605AP	Purified	200 µg	1.0 mg/ml	CLCR2A00
CL7605AP-BULK	Purified	1.0 mg	1.0 mg/ml	CLCR2A00
CL7605APC	APC	100 µg	0.1 mg/ml	CLCR2A05
CL7605B	Biotin	100 µg	0.1 mg/ml	CLCR2A15
CL7605F	FITC	100 µg	0.1 mg/ml	CLCR2A01
CL7605PE	PE	50 µg	0.1 mg/ml	CLCR2A04
CL7605PE-CY7	PE-Cy7	100 µg	0.1 mg/ml	CLCR2A12
CL7605AF4	Alexa Fluor [®] 488	100 µg	0.1 mg/ml	N/A
CL7605AF6	Alexa Fluor [®] 647	100 µg	0.1 mg/ml	N/A
CL7605AF7	Alexa Fluor [®] 700	100 µg	0.1 mg/ml	N/A

Alexa Fluor[®] is a registered trademark of Life Technologies Corporation.

Isotype: Rat IgG_{2a}

DESCRIPTION:

Cedarlane's anti-Human CD45 monoclonal antibody specifically binds the human CD45 Leukocyte Common Antigen (T200). CD45 is a family of single-chain transmembrane glycoproteins that consists of at least four isoforms (220, 205, 190, 180 kDa). Anti-Human CD45 monoclonal antibody recognizes an epitope common to all known isoforms. CD45 is expressed on hematopoietic cell lines, but not mature red cells, and is not detected on differentiated cells of other tissues. The protein phosphatase activity of the intracellular portion of CD45 is involved in transmembrane signaling for regulation of various cellular functions. Antibody to CD45 is used to differentiate lymphomas from non-hematopoietic undifferentiated neoplasms.

PRESENTATION:

Purified: Purified IgG buffered in PBS and 0.02% NaN₃. (Purified from ascitic fluid via Protein G Chromatography). For maximum recovery of contents, spin down tube before use.

For maximal recovery of contents, please quick-spin vial before opening.

Biotin, FITC, APC, PE, PE-Cy7, AF488, AF647 and AF700: Biotin/FITC/PE/PE-Cy7/APC/AF488/ AF647/AF700 conjugated IgG buffered in PBS, 0.02% NaN₃ and EIA grade BSA as a stabilizing protein to bring total protein concentration to 4-5 mg/ml.

Continued Overleaf....

Visit our website for your local distributor.

CEDARLANE[®]



www.cedarlanelabs.com

An ISO 9001:2015 and ISO 13485:2016
registered company.

In CANADA: Toll Free: 1-800-268-5058

4410 Paletta Court, Burlington, ON L7L 5R2 ph: (289) 288-0001, fax: (289) 288-0020
e-mail: general@cedarlanelabs.com

In the USA: Toll Free: 1-800-721-1644

1210 Turrentine Street, Burlington, NC 27215 ph: (336) 513-5135, fax: (336) 513-5138
e-mail: service@cedarlanelabs.com

STORAGE/STABILITY:

For all formats, store at 4°C. DO NOT FREEZE APC, PE, PE-Cy7, AF488, AF647 and AF700 conjugates. For long term storage (**Purified, Biotin, FITC**), aliquot and freeze unused portion at -20°C in volumes appropriate for single usage. Avoid freeze/thaw cycles.

APPLICATION:

This antibody is suitable for use in Western Blot, ICC/IF and Flow Cytometry.

SPECIFICATIONS:

Clone: YAML 501.4

Hybridoma Production:

Immunization: Rat monoclonal antibody raised against acute myeloid leukemia cells of human origin.

Specificity: This antibody is specific for human CD45.

TEST RESULTS:

Tissue Distribution by Flow Cytometry Analysis:

Cell Concentration: 1x10⁶ cells per tests

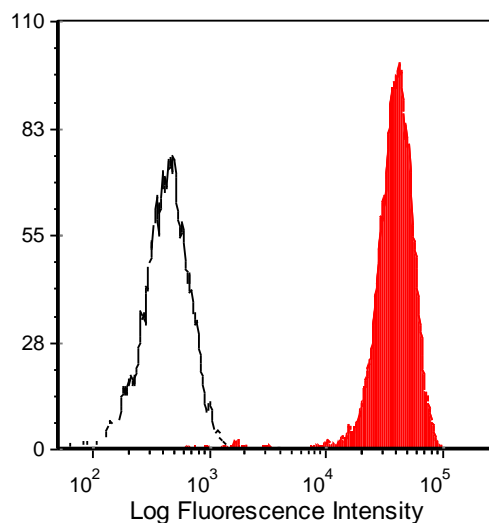
Antibody Concentration Used: 0.5 µg/10⁶ cells

Cell Source:

Human PBLs

Percentage of cells stained above control:

88.5%



Human peripheral blood lymphocytes were stained with anti-CD45 (T200) (clone: YAML 501.4) (filled histogram) or Rat IgG2a isotype control (open histogram).

N.B. Appropriate control samples should always be included in any labeling studies.

*** For optimal results in various applications, it is recommended that each investigator determine dilutions appropriate for individual use.**

REFERENCES:

1. Aqel NM, Ball RY, Waldmann H, Mitchinson MJ. **Identification of macrophages and smooth muscle cells in human atherosclerosis using monoclonal antibodies.** J Pathol. 146(3):197-204, 1985.
2. Johnson P, Greenbaum L, Bottomly K, Trowbridge IS. **Identification of the alternatively spliced exons of murine CD45 (T200) required for reactivity with B220 and other T200-restricted antibodies.** J Exp Med. Mar 1; 169 (3):1179-84. 1989.
3. Streuli M, Hall LR, Saga Y, Schlossman SF, Saito H. **Differential usage of three exons generates at least five different mRNAs encoding human leukocyte common antigens.** J Exp Med. Nov 1; 166 (5):1548-66. 1987.
4. Hale G, Clark M, Waldmann H. **Therapeutic potential of rat monoclonal antibodies: isotype specificity of antibody-dependent cell-mediated cytotoxicity with human lymphocytes.** J Immunol. May; 134(5):3056-61. 1985.

FOR RESEARCH USE ONLY

® is a registered trademark of Cedarlane