



# SZABO SCANDIC

Part of Europa Biosite

## Produktinformation



Forschungsprodukte & Biochemikalien



Zellkultur & Verbrauchsmaterial



Diagnostik & molekulare Diagnostik



Laborgeräte & Service

Weitere Information auf den folgenden Seiten!  
See the following pages for more information!



### Lieferung & Zahlungsart

siehe unsere [Liefer- und Versandbedingungen](#)

### Zuschläge

- Mindermengenzuschlag
- Trockeneiszuschlag
- Gefahrgutzuschlag
- Expressversand

### SZABO-SCANDIC HandelsgmbH

Quellenstraße 110, A-1100 Wien

T. +43(0)1 489 3961-0

F. +43(0)1 489 3961-7

[mail@szabo-scandic.com](mailto:mail@szabo-scandic.com)

[www.szabo-scandic.com](http://www.szabo-scandic.com)

[linkedin.com/company/szaboscandic](https://www.linkedin.com/company/szaboscandic) 

Technically  
Speaking

**CEDARLANE**<sup>®</sup>   
[www.cedarlanelabs.com](http://www.cedarlanelabs.com)

Conveniently Delivering You Today's Innovations  
for the Science of Tomorrow™

**Anti-Human CD45R  
Monoclonal Antibody**

Catalogue#	Format	Size	Concentration	Isotype Control
<b>CL7606AP</b>	Purified	200ug	1.0 mg/ml	CLCR2B00
<b>CL7606B</b>	Biotin	100ug	0.1 mg/ml	CLCR2B15
<b>CL7606F</b>	FITC	100ug	0.1 mg/ml	CLCR2B01
<b>CL7606PE</b>	PE	50ug	0.1 mg/ml	CLCR2B04
<b>CL7606APC</b>	APC	100µg	0.1 mg/ml	CLCR2B05
<b>CL7606NA</b>	NA	1.0mg	1mg/ml	CLCR2B00
<b>CL7606AF4</b>	Alexa Fluor <sup>®</sup> 488	100 µg	0.1 mg/ml	N/A

Alexa Fluor<sup>®</sup> is a registered trademark of Life Technologies Corporation.

Isotype: Rat IgG<sub>2b</sub>

**DESCRIPTION:**

Cedarlane's anti-Human CD45R monoclonal antibody specifically binds to human CD45R. This is the longest isoform of the human leucocyte common antigen, CD45. CD45 is a family of single-chain transmembrane glycoproteins with protein phosphatase activity involved in transmembrane signaling. The molecular weight of CD45R is dependent on its level of glycosylation, which varies from its sources of expression: 200 kDa from T cells, 220 kDa from B cells as well as certain activated T cells and other antigen presenting cells. Recognition of antigen may be dependent on expression levels of sialic acid.

**PRESENTATION:**

**Purified:** Purified IgG buffered in PBS and 0.02% NaN<sub>3</sub>. (Purified from ascitic fluid via Protein G Chromatography). For maximum recovery of contents, spin down tube before use.

**Biotin, FITC, PE, APC and AF488:** Biotin/FITC/PE/APC/AF488 conjugated IgG buffered in PBS, 0.02% NaN<sub>3</sub> and EIA grade BSA as a stabilizing protein to bring total protein concentration to 4-5 mg/ml.

**STORAGE/STABILITY:**

For all formats, store at 4°C. DO NOT FREEZE PE, APC and AF488 conjugates. For long term storage (**Purified, Biotin, FITC**), aliquot and freeze unused portion at -20°C in volumes appropriate for single usage. Avoid freeze/thaw cycles.

**APPLICATIONS:**

This antibody is suitable for use in Western Blot and Flow Cytometry.

Visit our website for your local distributor.

**CEDARLANE**<sup>®</sup> 

[www.cedarlanelabs.com](http://www.cedarlanelabs.com)

An ISO 9001:2000 and ISO 13485:2003  
registered company.

In CANADA: **Toll Free: 1-800-268-5058**

4410 Paletta Court, Burlington, ON L7L 5R2 ph: (289) 288-0001, fax: (289) 288-0020  
e-mail: [general@cedarlanelabs.com](mailto:general@cedarlanelabs.com)

In the USA: **Toll Free: 1-800-721-1644**

1210 Turrentine Street, Burlington, NC 27215 ph: (336) 513-5135, fax: (336) 513-5138  
e-mail: [service@cedarlanelabs.com](mailto:service@cedarlanelabs.com)

**SPECIFICATIONS:**

Clone: YTH 80.103

Hybridoma Production:

Immunization: Rat monoclonal antibody raised against human CD45R

Specificity: This antibody is specific for human CD45R.

**TEST RESULTS:**

Tissue Distribution by Flow Cytometry Analysis:

Cell Concentration:  $1 \times 10^6$  cells per tests

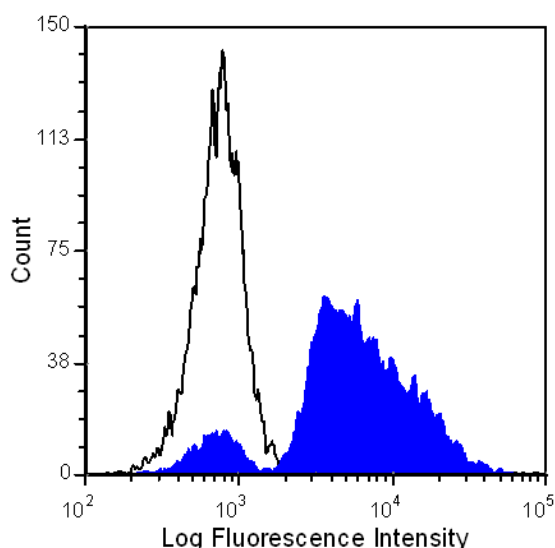
Antibody Concentration Used:  $1.0 \mu\text{g}/10^6$  cells

Cell Source

Human PBLs

Percentage of cells stained above control:

79.1%



Human peripheral blood lymphocytes were stained with anti-CD45R (clone: YTH 80.103) (filled histogram) or Rat IgG2b isotype control (open histogram).

**N.B.** Appropriate control samples should always be included in any labeling studies.

\* For optimal results in various applications, it is recommended that each investigator determine dilutions appropriate for individual use.

**REFERENCES:**

1. Dianzani U, Redoglia V, Malavasi F, Bragardo M, Pileri A, Janeway CA Jr, Bottomly K. **Isoform-specific associations of CD45 with accessory molecules in human T lymphocytes.** Eur J Immunol. Feb; 22(2):365-71. 1992.
2. Hale G, Clark M, Waldmann H. **Therapeutic potential of rat monoclonal antibodies: isotype specificity of antibody-dependent cell-mediated cytotoxicity with human lymphocytes.** J Immunol. May; 134(5):3056-61. 1985.

**LABORATORY REAGENT FOR RESEARCH USE ONLY**