



SZABO SCANDIC

Part of Europa Biosite

Produktinformation



Forschungsprodukte & Biochemikalien



Zellkultur & Verbrauchsmaterial



Diagnostik & molekulare Diagnostik



Laborgeräte & Service

Weitere Information auf den folgenden Seiten!
See the following pages for more information!



Lieferung & Zahlungsart

siehe unsere [Liefer- und Versandbedingungen](#)

Zuschläge

- Mindermengenzuschlag
- Trockeneiszuschlag
- Gefahrgutzuschlag
- Expressversand

SZABO-SCANDIC HandelsgmbH

Quellenstraße 110, A-1100 Wien

T. +43(0)1 489 3961-0

F. +43(0)1 489 3961-7

mail@szabo-scandic.com

www.szabo-scandic.com

[linkedin.com/company/szaboscandic](https://www.linkedin.com/company/szaboscandic) 

Technically
Speaking

CEDARLANE[®]
www.cedarlanelabs.com



Conveniently Delivering You Today's Innovations
for the Science of Tomorrow™

Anti-Human Complement Component C1q Monoclonal Antibody

Catalogue#	Format	Size	Concentration	Isotype Control
CL7611AP	Purified	250 µg	1.0 mg/ml	CLCMG100
CL7611B	Biotin	100 µg	0.1 mg/ml	CLCMG115
CL7611F	FITC	100 µg	0.1 mg/ml	CLCMG101
CL7611PE	PE	50 µg	0.1 mg/ml	CLCMG104
CL7611PE-SP	PE	100µg	0.2mg/ml	CLCMG104
CL7611APC	APC	100 µg	0.1 mg/ml	CLCMG105

Isotype: Mouse IgG₁

DESCRIPTION:

Cedarlane's Anti-Human Complement Component C1q Monoclonal Antibody detects the C1q portion of the macromolecular C1 complex. C1 exists in the serum and consists of C1q and 2 molecules each of C1r and C1s, held together in a complex (C1qr2s2) stabilized by Ca²⁺ ions. C1q specifically binds surface bound IgG and IgM to facilitate complement activation via the classical pathway. The C1q subunit is made up of an umbrella-like radial array of six chains, each of which has a globular head connected by a collagen-like arm to a central stalk. The C1q molecule is 460 kDa (hexamer of three pairs of chains; 22, 23, 24 kDa). Note that the specific epitope (subunit) which this antibody recognizes has not yet been determined.

PRESENTATION:

Purified: Purified IgG buffered in PBS and 0.02% NaN₃. (Purified from ascitic fluid via Protein G Chromatography). For maximum recovery of contents, spin down tube before use.

Biotin, FITC, PE, APC: Biotin/FITC/PE/APC conjugated IgG buffered in PBS, 0.02% NaN₃ and EIA grade BSA as a stabilizing protein to bring total protein concentration to 4-5 mg/ml.

STORAGE/STABILITY:

For all formats, store at 4°C. DO NOT FREEZE **PE and APC** conjugates. For long term storage (**Purified, Biotin, FITC**), aliquot and freeze unused portion at -20°C in volumes appropriate for single usage. Avoid freeze/thaw cycles.

APPLICATION:

This antibody has been reported to work in ELISA, Western Blotting and flow cytometry. It has also been reported to cross-react with dog C1q.

Visit our website for your local distributor.

CEDARLANE[®]



www.cedarlanelabs.com

An ISO 9001:2000 and ISO 13485:2003
registered company.

In CANADA: Toll Free: 1-800-268-5058

4410 Paletta Court, Burlington, ON L7L 5R2 ph: (289) 288-0001, fax: (289) 288-0020
e-mail: general@cedarlanelabs.com

In the USA: Toll Free: 1-800-721-1644

1210 Turrentine Street, Burlington, NC 27215 ph: (336) 513-5135, fax: (336) 513-5138
e-mail: service@cedarlanelabs.com

SPECIFICATIONS:

Clone: MhC5B9

Hybridoma Production:

Immunization:

Immunogen: Syngeneic thymocytes incubated with mouse (IgG2a) anti-murine Thy 1.2 and human serum.

Donor: BALB/c mice

Fusion Partner: Mouse myeloma cell line P3X63 Ag. 8.653

Specificity: Human Complement Component C1q.

TEST RESULTS:

Tissue Distribution by Flow Cytometry Analysis:

Cell Concentration: 1x10⁶ cells per tests

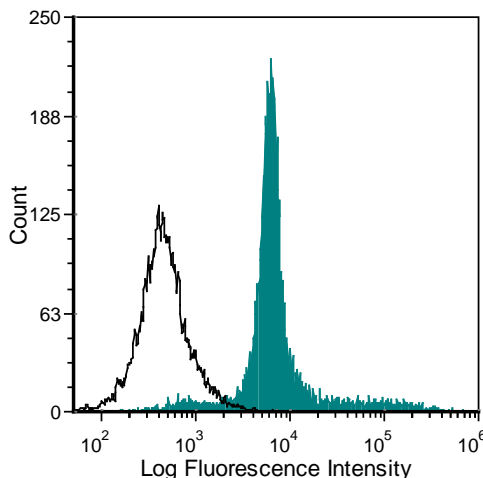
Antibody Concentration Used: 0.5 µg/10⁶ cells

Cell Source:

Balb/c Thymus (Activated with anti-Mouse CD90, Fresh human serum, and 5 mM EDTA)

Percentage of cells stained above control:

42.6%



Balb/c mouse thymocytes incubated with anti-mouse CD90 (Thy 1.2) (clone: 5a-8) + fresh human serum + 5 mM EDTA were stained with anti-C1q (clone: MhC5B9) (filled histogram) or mouse IgG1 isotype control (open histogram).

N.B. Appropriate control samples should always be included in any labeling studies.

*** For optimal results in various applications, it is recommended that each investigator determine dilutions appropriate for individual use.**

REFERENCES:

- Schuh R, Kremmer E, Ego E, Wasiliu M and Thierfelder S. 1992. **Determination of monoclonal antibody specificity by immunoadsorption and western blotting.** *J Immunol Methods.* July 31; 152(1): 59-67.
- Zwirner J, Wittig A, Kremmer E, Gotze O. (1998) **A novel ELISA for the evaluation of the classical pathway of complement.** *J. Immunol. Methods.* 211: 183-190.
- Nielsen C, Ostergaard O, Stener L, et al. (2012) **Increased IgG on Cell-Derived Plasma Microparticles in Systemic Lupus Erythematosus Is Associated With Autoantibodies and Complement Activation.** *Arthritis and Rheumatism.* 64(4):1227-36.

LABORATORY REAGENT

® is a registered trademark of Cedarlane Corporation