



# SZABO SCANDIC

Part of Europa Biosite

## Produktinformation



Forschungsprodukte & Biochemikalien



Zellkultur & Verbrauchsmaterial



Diagnostik & molekulare Diagnostik



Laborgeräte & Service

Weitere Information auf den folgenden Seiten!  
See the following pages for more information!



### Lieferung & Zahlungsart

siehe unsere [Liefer- und Versandbedingungen](#)

### Zuschläge

- Mindermengenzuschlag
- Trockeneiszuschlag
- Gefahrgutzuschlag
- Expressversand

### SZABO-SCANDIC HandelsgmbH

Quellenstraße 110, A-1100 Wien

T. +43(0)1 489 3961-0

F. +43(0)1 489 3961-7

[mail@szabo-scandic.com](mailto:mail@szabo-scandic.com)

[www.szabo-scandic.com](http://www.szabo-scandic.com)

[linkedin.com/company/szaboscandic](https://www.linkedin.com/company/szaboscandic) 

Technically  
Speaking

**CEDARLANE**<sup>®</sup>   
[www.cedarlanelabs.com](http://www.cedarlanelabs.com)

Conveniently Delivering You Today's Innovations  
for the Science of Tomorrow™

**Anti-Human CD21  
Monoclonal Antibody**

| Catalogue#       | Format                       | Size   | Concentration | Isotype Control |
|------------------|------------------------------|--------|---------------|-----------------|
| <b>CL7613AP</b>  | Purified                     | 200µg  | 1.0 mg/ml     | CLCMG100        |
| <b>CL7613B</b>   | Biotin                       | 100µg  | 0.1 mg/ml     | CLCMG115        |
| <b>CL7613F</b>   | FITC                         | 100µg  | 0.1 mg/ml     | CLCMG101        |
| <b>CL7613PE</b>  | PE                           | 50µg   | 0.1 mg/ml     | CLCMG104        |
| <b>CL7613APC</b> | APC                          | 100µg  | 0.1 mg/ml     | CLCMG105        |
| <b>CL7613AF4</b> | Alexa Fluor <sup>®</sup> 488 | 100 µg | 0.1 mg/ml     | N/A             |
| <b>CL7613AF6</b> | Alexa Fluor <sup>®</sup> 647 | 100 µg | 0.1 mg/ml     | N/A             |

Alexa Fluor<sup>®</sup> is a registered trademark of Life Technologies Corporation.

Isotype: Mouse IgG<sub>1</sub>

**DESCRIPTION:**

Cedarlane's anti-Human CD21 monoclonal antibody specifically binds human CD21, also known as Complement component (3d/Epstein Barr virus) receptor 2 (CR2). CD21 is a protein expressed on mature B cells and follicular dendritic cells and is weakly expressed on immature thymocytes and T lymphocytes. CD21 binds to C3d, C3dg, and iC3b in the complement system. Other ligands include Epstein Barr virus and Interferon alpha. CD21 plays a role in B cell activation by binding to CD23 and forming a co-receptor complex with CD19, CD81, and Leu13.

**PRESENTATION:**

**Purified:** Purified IgG buffered in PBS and 0.02% NaN<sub>3</sub>. (Purified from ascitic fluid via Protein G Chromatography). For maximum recovery of contents, spin down tube before use.

**Biotin, FITC, PE, APC, AF488 and AF647:** Biotin/FITC/PE/APC/AF488/AF647 conjugated IgG buffered in PBS, 0.02% NaN<sub>3</sub> and EIA grade BSA as a stabilizing protein to bring total protein concentration to 4-5 mg/ml.

**STORAGE/STABILITY:**

For all formats, store at 4°C. DO NOT FREEZE APC, PE, AF488 and AF647 conjugates. For long term storage (**Purified, Biotin, FITC**), aliquot and freeze unused portion at -20°C in volumes appropriate for single usage. Avoid freeze/thaw cycles.

**APPLICATION:**

This antibody is suitable for use in Immunohistochemistry (Frozen) and Flow Cytometry.

*Continued....*

Visit our website for your local distributor.

**CEDARLANE**<sup>®</sup> 

[www.cedarlanelabs.com](http://www.cedarlanelabs.com)

An ISO 9001:2015 and ISO 13485:2016  
registered company.

In CANADA: Toll Free: 1-800-268-5058

4410 Paletta Court, Burlington, ON L7L 5R2 ph: (289) 288-0001, fax: (289) 288-0020  
e-mail: [general@cedarlanelabs.com](mailto:general@cedarlanelabs.com)

In the USA: Toll Free: 1-800-721-1644

1210 Turrentine Street, Burlington, NC 27215 ph: (336) 513-5135, fax: (336) 513-5138  
e-mail: [service@cedarlanelabs.com](mailto:service@cedarlanelabs.com)

## **SPECIFICATIONS:**

Clone: 21A/5

### Hybridoma Production:

Immunization: Mouse monoclonal antibodies raised against human CD21.

Specificity: This antibody is specific for human CD21.

## **TEST RESULTS:**

### Tissue Distribution by Flow Cytometry Analysis:

Cell Concentration:  $1 \times 10^6$  cells per tests

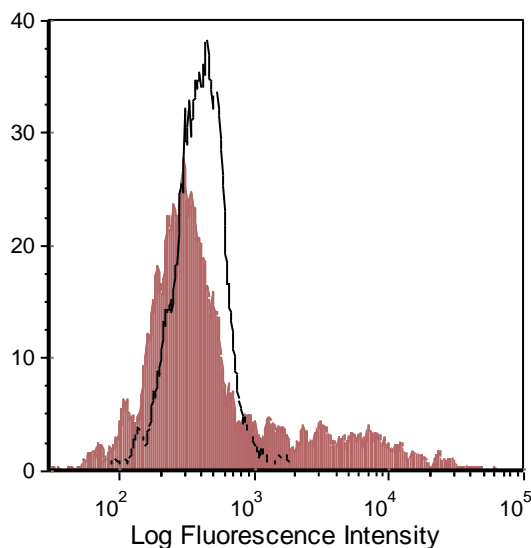
Antibody Concentration Used:  $0.5 \mu\text{g}/10^6$  cells

### Cell Source

Human PBLs

### Percentage of cells stained above control:

9.14%



Human peripheral blood lymphocytes were stained with anti-CD21 (clone: 21A/5) (filled histogram) or Mouse IgG1 isotype control (open histogram).

**N.B. Appropriate control samples should always be included in any labeling studies.**

**\* For optimal results in various applications, it is recommended that each investigator determine dilutions appropriate for individual use.**

## **REFERENCES:**

1. CD Guide for CD21 (1989) In Knapp W, et al (eds) Leucocyte Typing IV, Oxford University Press, Oxford, New York and Tokyo, p 1080. ISBN-13: 978-0192618672
2. Kovacs JM, Hannan JP, Eisenmesser EZ, Holers VM. (2009) Mapping of the C3d ligand binding site on complement receptor 2 (CR2/CD21) using nuclear magnetic resonance and chemical shift analysis. J Biol Chem. 284 (14):9513-20.

**FOR RESEARCH USE ONLY**  
® is a registered trademark of Cedarlane