



SZABO SCANDIC

Part of Europa Biosite

Produktinformation



Forschungsprodukte & Biochemikalien



Zellkultur & Verbrauchsmaterial



Diagnostik & molekulare Diagnostik



Laborgeräte & Service

Weitere Information auf den folgenden Seiten!
See the following pages for more information!



Lieferung & Zahlungsart

siehe unsere [Liefer- und Versandbedingungen](#)

Zuschläge

- Mindermengenzuschlag
- Trockeneiszuschlag
- Gefahrgutzuschlag
- Expressversand

SZABO-SCANDIC HandelsgmbH

Quellenstraße 110, A-1100 Wien

T. +43(0)1 489 3961-0

F. +43(0)1 489 3961-7

mail@szabo-scandic.com

www.szabo-scandic.com

[linkedin.com/company/szaboscandic](https://www.linkedin.com/company/szaboscandic) 

Technically
Speaking

CEDARLANE[®] 
www.cedarlanelabs.com

Conveniently Delivering You Today's Innovations
for the Science of Tomorrow™

**Anti-Human CD21
Monoclonal Antibody**

Catalogue#	Format	Size	Concentration	Isotype Control
CL7613AP	Purified	200µg	1.0 mg/ml	CLCMG100
CL7613B	Biotin	100µg	0.1 mg/ml	CLCMG115
CL7613F	FITC	100µg	0.1 mg/ml	CLCMG101
CL7613PE	PE	50µg	0.1 mg/ml	CLCMG104
CL7613APC	APC	100µg	0.1 mg/ml	CLCMG105
CL7613AF4	Alexa Fluor [®] 488	100 µg	0.1 mg/ml	N/A
CL7613AF6	Alexa Fluor [®] 647	100 µg	0.1 mg/ml	N/A

Alexa Fluor[®] is a registered trademark of Life Technologies Corporation.

Isotype: Mouse IgG₁

DESCRIPTION:

Cedarlane's anti-Human CD21 monoclonal antibody specifically binds human CD21, also known as Complement component (3d/Epstein Barr virus) receptor 2 (CR2). CD21 is a protein expressed on mature B cells and follicular dendritic cells and is weakly expressed on immature thymocytes and T lymphocytes. CD21 binds to C3d, C3dg, and iC3b in the complement system. Other ligands include Epstein Barr virus and Interferon alpha. CD21 plays a role in B cell activation by binding to CD23 and forming a co-receptor complex with CD19, CD81, and Leu13.

PRESENTATION:

Purified: Purified IgG buffered in PBS and 0.02% NaN₃. (Purified from ascitic fluid via Protein G Chromatography). For maximum recovery of contents, spin down tube before use.

Biotin, FITC, PE, APC, AF488 and AF647: Biotin/FITC/PE/APC/AF488/AF647 conjugated IgG buffered in PBS, 0.02% NaN₃ and EIA grade BSA as a stabilizing protein to bring total protein concentration to 4-5 mg/ml.

STORAGE/STABILITY:

For all formats, store at 4°C. DO NOT FREEZE APC, PE, AF488 and AF647 conjugates. For long term storage (**Purified, Biotin, FITC**), aliquot and freeze unused portion at -20°C in volumes appropriate for single usage. Avoid freeze/thaw cycles.

APPLICATION:

This antibody is suitable for use in Immunohistochemistry (Frozen) and Flow Cytometry.

Continued....

Visit our website for your local distributor.

CEDARLANE[®] 

www.cedarlanelabs.com

An ISO 9001:2015 and ISO 13485:2016
registered company.

In CANADA: **Toll Free: 1-800-268-5058**

4410 Paletta Court, Burlington, ON L7L 5R2 ph: (289) 288-0001, fax: (289) 288-0020
e-mail: general@cedarlanelabs.com

In the USA: **Toll Free: 1-800-721-1644**

1210 Turrentine Street, Burlington, NC 27215 ph: (336) 513-5135, fax: (336) 513-5138
e-mail: service@cedarlanelabs.com

SPECIFICATIONS:

Clone: 21A/5

Hybridoma Production:

Immunization: Mouse monoclonal antibodies raised against human CD21.

Specificity: This antibody is specific for human CD21.

TEST RESULTS:

Tissue Distribution by Flow Cytometry Analysis:

Cell Concentration: 1×10^6 cells per tests

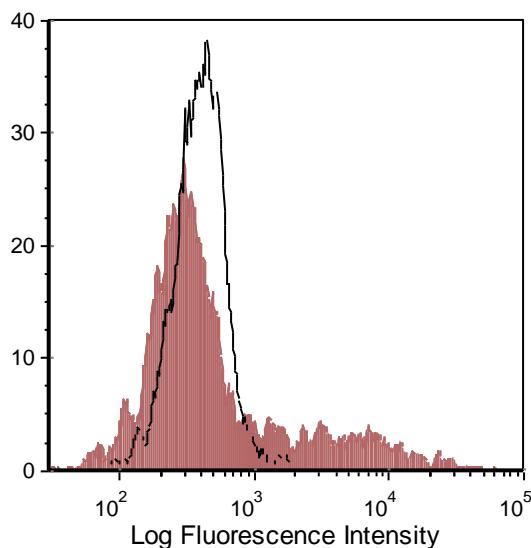
Antibody Concentration Used: $0.5 \mu\text{g}/10^6$ cells

Cell Source

Human PBLs

Percentage of cells stained above control:

9.14%



Human peripheral blood lymphocytes were stained with anti-CD21 (clone: 21A/5) (filled histogram) or Mouse IgG1 isotype control (open histogram).

N.B. Appropriate control samples should always be included in any labeling studies.

*** For optimal results in various applications, it is recommended that each investigator determine dilutions appropriate for individual use.**

REFERENCES:

1. CD Guide for CD21 (1989) In Knapp W, et al (eds) Leucocyte Typing IV, Oxford University Press, Oxford, New York and Tokyo, p 1080. ISBN-13: 978-0192618672
2. Kovacs JM, Hannan JP, Eisenmesser EZ, Holers VM. (2009) Mapping of the C3d ligand binding site on complement receptor 2 (CR2/CD21) using nuclear magnetic resonance and chemical shift analysis. J Biol Chem. 284 (14):9513-20.

FOR RESEARCH USE ONLY
® is a registered trademark of Cedarlane