



# SZABO SCANDIC

Part of Europa Biosite

## Produktinformation



Forschungsprodukte & Biochemikalien



Zellkultur & Verbrauchsmaterial



Diagnostik & molekulare Diagnostik



Laborgeräte & Service

Weitere Information auf den folgenden Seiten!  
See the following pages for more information!



### Lieferung & Zahlungsart

siehe unsere [Liefer- und Versandbedingungen](#)

### Zuschläge

- Mindermengenzuschlag
- Trockeneiszuschlag
- Gefahrgutzuschlag
- Expressversand

### SZABO-SCANDIC HandelsgmbH

Quellenstraße 110, A-1100 Wien

T. +43(0)1 489 3961-0

F. +43(0)1 489 3961-7

[mail@szabo-scandic.com](mailto:mail@szabo-scandic.com)

[www.szabo-scandic.com](http://www.szabo-scandic.com)

[linkedin.com/company/szaboscandic](https://www.linkedin.com/company/szaboscandic) 

Technically  
Speaking

**CEDARLANE**<sup>®</sup>   
[www.cedarlanelabs.com](http://www.cedarlanelabs.com)

Conveniently Delivering You Today's Innovations  
for the Science of Tomorrow™

**Anti-Human CD35  
Monoclonal Antibody**

Catalogue#	Format	Size	Concentration	Isotype Control
<b>CL7614AP</b>	Purified	200µg	1.0 mg/ml	CLCMG100
<b>CL7614B</b>	Biotin	100µg	0.1 mg/ml	CLCMG115
<b>CL7614F</b>	FITC	100µg	0.1 mg/ml	CLCMG101
<b>CL7614PE</b>	PE	50µg	0.1 mg/ml	CLCMG104
<b>CL7614AF4</b>	Alexa Fluor <sup>®</sup> 488	100 µg	0.1 mg/ml	N/A
<b>CL7614AF6</b>	Alexa Fluor <sup>®</sup> 647	100 µg	0.1 mg/ml	N/A

Alexa Fluor<sup>®</sup> is a registered trademark of Life Technologies Corporation.

Isotype: Mouse IgG<sub>1</sub>

**DESCRIPTION:**

Cedarlane's anti-Human CD35 monoclonal antibody specifically binds human CD35, also known as Complement receptor type 1 (CR1). CD35 is a membrane glycoprotein that binds C3b and C4b, and is expressed on granulocytes, monocytes, B cells, follicular dendritic cells, subsets of NK and T cells and erythrocytes. CD35's affinity for C3b plays a role in the inactivation of the alternative complement pathway by affecting the function of C3 convertase.

**PRESENTATION:**

**Purified:** Purified IgG buffered in PBS and 0.02% NaN<sub>3</sub>. (Purified from ascitic fluid via Protein G Chromatography). For maximum recovery of contents, spin down tube before use.

**Biotin, FITC, PE, APC, AF488 and AF647:** Biotin/FITC/PE/APC/AF488 conjugated IgG buffered in PBS, 0.02% NaN<sub>3</sub> and EIA grade BSA as a stabilizing protein to bring total protein concentration to 4-5 mg/ml.

**STORAGE/STABILITY:**

For all formats, store at 4°C. DO NOT FREEZE **PE, APC, AF488 and AF647** conjugates. For long term storage (**Purified, Biotin, FITC**), aliquot and freeze unused portion at -20°C in volumes appropriate for single usage. Avoid freeze/thaw cycles.

**APPLICATION:**

This antibody is suitable for use in Flow Cytometry, Immunohistochemistry (Frozen) and Western Blot.

*Continued Overleaf.....*

Visit our website for your local distributor.

**CEDARLANE**<sup>®</sup> 

[www.cedarlanelabs.com](http://www.cedarlanelabs.com)

An ISO 9001:2000 and ISO 13485:2003  
registered company.

In CANADA: Toll Free: 1-800-268-5058

4410 Paletta Court, Burlington, ON L7L 5R2 ph: (289) 288-0001, fax: (289) 288-0020  
e-mail: [general@cedarlanelabs.com](mailto:general@cedarlanelabs.com)

In the USA: Toll Free: 1-800-721-1644

1210 Turrentine Street, Burlington, NC 27215 ph: (336) 513-5135, fax: (336) 513-5138  
e-mail: [service@cedarlanelabs.com](mailto:service@cedarlanelabs.com)

**SPECIFICATIONS:**

Clone: To5

Hybridoma Production:

Immunization: Mouse monoclonal antibodies raised against human C3b receptor-enriched precipitates from tonsil cell membranes.

Specificity: This antibody is specific for human CD35.

**TEST RESULTS:**

Tissue Distribution by Flow Cytometry Analysis:

Cell Concentration:  $1 \times 10^6$  cells per tests

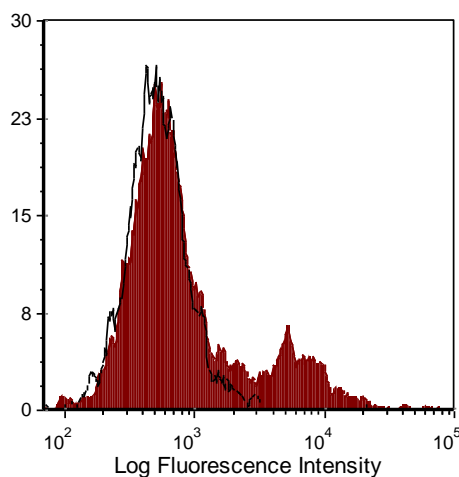
Antibody Concentration Used:  $0.5 \mu\text{g}/10^6$  cells

Cell Source

Percentage of cells stained above control:

Human PBLs

11.26%



Human peripheral blood lymphocytes were stained with anti-CD35 (clone: To5) (filled histogram) or Mouse IgG1 isotype control (open histogram).

**N.B. Appropriate control samples should always be included in any labeling studies.**

**\* For optimal results in various applications, it is recommended that each investigator determine dilutions appropriate for individual use.**

**REFERENCES:**

1. Fearon DT. Identification of the membrane glycoprotein that is the C3b receptor of the human erythrocyte, polymorphonuclear leukocyte, B lymphocyte, and monocyte. *J Exp Med.* Jul 1;152(1):20-30. 1980
2. Gerdes J, Klatt U, Stein H. Xenoantiserum to human C3 receptors: its preparation and effect on the C3b and C3d receptors of tonsil cells and the C3b receptors of erythrocytes and neutrophils. *Immunology.* Jan;39(1):75-84. 1980
3. Gerdes J, Naiem M, Mason DY, Stein H. Human complement (C3b) receptors defined by a mouse monoclonal antibody. *Immunology.* Apr;45(4):645-53. 1982

**FOR RESEARCH USE ONLY**

® is a registered trademark of Cedarlane