



# SZABO SCANDIC

Part of Europa Biosite

## Produktinformation



Forschungsprodukte & Biochemikalien



Zellkultur & Verbrauchsmaterial



Diagnostik & molekulare Diagnostik



Laborgeräte & Service

Weitere Information auf den folgenden Seiten!  
See the following pages for more information!



### Lieferung & Zahlungsart

siehe unsere [Liefer- und Versandbedingungen](#)

### Zuschläge

- Mindermengenzuschlag
- Trockeneiszuschlag
- Gefahrgutzuschlag
- Expressversand

### SZABO-SCANDIC HandelsgmbH

Quellenstraße 110, A-1100 Wien

T. +43(0)1 489 3961-0

F. +43(0)1 489 3961-7

[mail@szabo-scandic.com](mailto:mail@szabo-scandic.com)

[www.szabo-scandic.com](http://www.szabo-scandic.com)

[linkedin.com/company/szaboscandic](https://www.linkedin.com/company/szaboscandic) 

Technically  
Speaking

**CEDARLANE**<sup>®</sup>   
[www.cedarlanelabs.com](http://www.cedarlanelabs.com)

Conveniently Delivering You Today's Innovations  
for the Science of Tomorrow™

### Anti-Human CD163 Monoclonal Antibody

Catalogue#	Format	Size	Concentration	Isotype Control
<b>CL7617AP</b>	Purified	200µg	1.0 mg/ml	CLCMG100
<b>CL7617B</b>	Biotin	100µg	0.1 mg/ml	CLCMG115
<b>CL7617F</b>	FITC	100µg	0.1 mg/ml	CLCMG101
<b>CL7617PE</b>	PE	50µg	0.1 mg/ml	CLCMG104
<b>CL7617APC</b>	APC	100µg	0.1 mg/ml	CLCMG105
<b>CL7617AF4</b>	Alexa Fluor <sup>®</sup> 488	100 µg	0.1 mg/ml	N/A
<b>CL7617AF6</b>	Alexa Fluor <sup>®</sup> 647	100 µg	0.1 mg/ml	N/A

Alexa Fluor<sup>®</sup> is a registered trademark of Life Technologies Corporation.

Isotype: Mouse IgG<sub>1, k</sub>

#### **DESCRIPTION:**

Cedarlane's Anti-Human CD163 monoclonal antibody binds CD163, also known as haemoglobin scavenger receptor and M130. This receptor is a membrane glycoprotein of 130 kDa and is found during the late stages of inflammation exclusively on the surface of human monocytes and macrophages. CD163 is a member of the scavenger receptor cysteine-rich family, and is a receptor for the haemoglobin-haptoglobin complex.

#### **PRESENTATION:**

**Purified:** Purified IgG buffered in PBS and 0.02% NaN<sub>3</sub>. (Purified from ascitic fluid via Protein G Chromatography). For maximum recovery of contents, spin down tube before use.

**Biotin, FITC, PE, APC, AF488 and AF647:** Biotin/FITC/PE/APC/AF488/AF647 conjugated IgG buffered in PBS, 0.02% NaN<sub>3</sub> and EIA grade BSA as a stabilizing protein to bring total protein concentration to 4-5 mg/ml.

#### **STORAGE/STABILITY:**

For all formats, store at 4°C. DO NOT FREEZE **PE, APC, AF488 and AF647** conjugates. For long term storage (**Purified, Biotin, FITC**), aliquot and freeze unused portion at -20°C in volumes appropriate for single usage. Avoid freeze/thaw cycles.

#### **APPLICATION:**

This antibody is suitable for use in Western Blot, Immunoprecipitation, Immunohistochemistry (Frozen; Paraffin-Embedded) and Flow Cytometry.

*Continued Overleaf....*

Visit our website for your local distributor.

**CEDARLANE**<sup>®</sup> 

[www.cedarlanelabs.com](http://www.cedarlanelabs.com)

An ISO 9001:2015 and ISO 13485:2016  
registered company.

In CANADA: Toll Free: 1-800-268-5058

4410 Paletta Court, Burlington, ON L7L 5R2 ph: (289) 288-0001, fax: (289) 288-0020  
e-mail: [general@cedarlanelabs.com](mailto:general@cedarlanelabs.com)

In the USA: Toll Free: 1-800-721-1644

1210 Turrentine Street, Burlington, NC 27215 ph: (336) 513-5135, fax: (336) 513-5138  
e-mail: [service@cedarlanelabs.com](mailto:service@cedarlanelabs.com)

## **SPECIFICATIONS:**

Clone: GHI/61

### Hybridoma Production:

Immunization: Mouse monoclonal antibodies raised against Hairy cell leukemia cells.

Specificity: This antibody is specific for human CD163.

## **TEST RESULTS:**

### Tissue Distribution by Flow Cytometry Analysis:

Cell Concentration:  $1 \times 10^6$  cells per tests

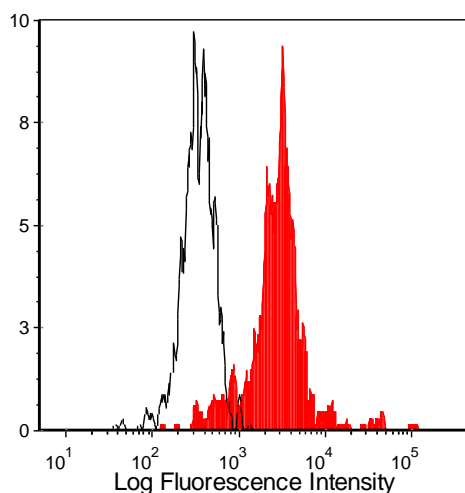
Antibody Concentration Used:  $1.0 \mu\text{g}/10^6$  cells

### Cell Source

### Percentage of cells stained above control:

Human Monocytes

86.16 %



Human peripheral blood monocytes were stained with anti-CD163 (clone: GHI/61) (filled histogram) or mouse IgG1 isotype control (open histogram).

**N.B. Appropriate control samples should always be included in any labeling studies.**

**\* For optimal results in various applications, it is recommended that each investigator determine dilutions appropriate for individual use.**

## **REFERENCES:**

1. Pulford K, Micklem K, McCarthy S, Cordell J, Jones M, Mason DY. A monocyte/macrophage antigen recognized by the four antibodies GHI/61, Ber-MAC3, Ki-M8 and SM4. *Immunology*. 75(4):588-95. 1992.
2. Law SK, Micklem KJ, Shaw JM, Zhang XP, Dong Y, Willis AC, Mason DY. A new macrophage differentiation antigen which is a member of the scavenger receptor superfamily. *Eur J Immunol*. 23(9):2320-5. 1993.
3. Møller HJ, Peterslund NA, Graversen JH, Moestrup SK. Identification of the hemoglobin scavenger receptor/CD163 as a natural soluble protein in plasma. *Blood*. 99(1):378-80. 2002.
4. Moniuszko M, Kowal K, Rusak M, Pietruczuk M, Dabrowska M, Bodzenta-Lukaszyk A. Monocyte CD163 and CD36 expression in human whole blood and isolated mononuclear cell samples: influence of different anticoagulants. *Clin Vaccine Immunol*. 13(6):704-7. 2006.

**FOR RESEARCH USE ONLY**

® is a registered trademark of Cedarlane