



SZABO SCANDIC

Part of Europa Biosite

Produktinformation



Forschungsprodukte & Biochemikalien



Zellkultur & Verbrauchsmaterial



Diagnostik & molekulare Diagnostik



Laborgeräte & Service

Weitere Information auf den folgenden Seiten!
See the following pages for more information!



Lieferung & Zahlungsart

siehe unsere [Liefer- und Versandbedingungen](#)

Zuschläge

- Mindermengenzuschlag
- Trockeneiszuschlag
- Gefahrgutzuschlag
- Expressversand

SZABO-SCANDIC HandelsgmbH

Quellenstraße 110, A-1100 Wien

T. +43(0)1 489 3961-0

F. +43(0)1 489 3961-7

mail@szabo-scandic.com

www.szabo-scandic.com

[linkedin.com/company/szaboscandic](https://www.linkedin.com/company/szaboscandic) 

Technically
Speaking

CEDARLANE[®]
www.cedarlanelabs.com



Conveniently Delivering You Today's Innovations
for the Science of Tomorrow™

**Anti-Human CD70
Monoclonal Antibody**

Catalogue#	Format	Size	Concentration	Isotype Control
CL7625AP	Purified	200µg	1.0 mg/ml	CLCMG100
CL7625B	Biotin	100µg	0.1 mg/ml	CLCMG115
CL7625F	FITC	100µg	0.1 mg/ml	CLCMG101
CL7625PE	PE	50µg	0.1 mg/ml	CLCMG104

Isotype: Mouse IgG₁

DESCRIPTION:

Cedarlane's anti-Human CD70 monoclonal antibody specifically binds human CD70. CD70 is a 30 kDa CD27 receptor ligand. CD70 and CD27 are from the tumour necrosis factor receptor superfamily 7. Proliferation and apoptosis can be induced by activation of the receptor. T cell proliferation induced by dendritic cells is inhibited by the BU69 clone.

PRESENTATION:

Purified: Purified IgG buffered in PBS and 0.02% NaN₃. (Purified from ascitic fluid via Protein G Chromatography). For maximum recovery of contents, spin down tube before use.

Biotin, FITC and PE: Biotin/FITC/PE conjugated IgG buffered in PBS, 0.02% NaN₃ and EIA grade BSA as a stabilizing protein to bring total protein concentration to 4-5 mg/ml.

STORAGE/STABILITY:

For all formats, store at 4°C. DO NOT FREEZE PE conjugates. For long term storage (**Purified, Biotin, FITC**), aliquot and freeze unused portion at -20°C in volumes appropriate for single usage. Avoid freeze/thaw cycles.

APPLICATION:

This antibody is suitable for use in Flow Cytometry, Immunohistochemistry (Frozen Sections) and Immunoprecipitation.

Continued Overleaf.....

Visit our website for your local distributor.

CEDARLANE[®]



www.cedarlanelabs.com

An ISO 9001:2000 and ISO 13485:2003
registered company.

In CANADA: Toll Free: 1-800-268-5058

4410 Paletta Court, Burlington, ON L7L 5R2 ph: (289) 288-0001, fax: (289) 288-0020
e-mail: general@cedarlanelabs.com

In the USA: Toll Free: 1-800-721-1644

1210 Turrentine Street, Burlington, NC 27215 ph: (336) 513-5135, fax: (336) 513-5138
e-mail: service@cedarlanelabs.com

SPECIFICATIONS:

Clone: BU69

Hybridoma Production:

Immunization:

Immunogen: Waldenstroms macroglobulinemia cell line WM-1

Donor: BALB/c mice

Fusion Partner: Mouse myeloma cell line NS1

Specificity: This antibody is specific for human CD70.

TEST RESULTS:

Tissue Distribution by Flow Cytometry Analysis:

Cell Concentration: 1x10⁶ cells per tests

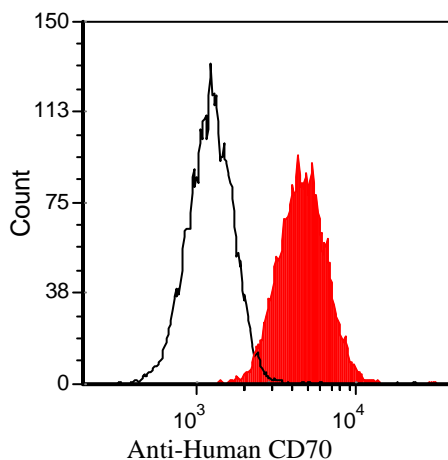
Antibody Concentration Used: 1.0 µg/10⁶ cells

Cell Source

Raji Cells

Percentage of cell stained above control:

95.8%



N.B. Appropriate control samples should always be included in any labeling studies.

*** For optimal results in various applications, it is recommended that each investigator determine dilutions appropriate for individual use.**

REFERENCES:

1. Ito T, Inaba M, Inaba K, Toki J, Sogo S, Iguchi T, Adachi Y, Yamaguchi K, Amakawa R, Valladeau J, Saeland S, Fukuhara S, Ikehara S. A CD1a+/CD11c+ subset of human blood dendritic cells is a direct precursor of Langerhans cells. *J Immunol.* Aug 1;163(3):1409-19. 1999

FOR RESEARCH USE ONLY
® is a registered trademark of Cedarlane