



# SZABO SCANDIC

Part of Europa Biosite

## Produktinformation



Forschungsprodukte & Biochemikalien



Zellkultur & Verbrauchsmaterial



Diagnostik & molekulare Diagnostik



Laborgeräte & Service

Weitere Information auf den folgenden Seiten!  
See the following pages for more information!



### Lieferung & Zahlungsart

siehe unsere [Liefer- und Versandbedingungen](#)

### Zuschläge

- Mindermengenzuschlag
- Trockeneiszuschlag
- Gefahrgutzuschlag
- Expressversand

### SZABO-SCANDIC HandelsgmbH

Quellenstraße 110, A-1100 Wien

T. +43(0)1 489 3961-0

F. +43(0)1 489 3961-7

[mail@szabo-scandic.com](mailto:mail@szabo-scandic.com)

[www.szabo-scandic.com](http://www.szabo-scandic.com)

[linkedin.com/company/szaboscandic](https://www.linkedin.com/company/szaboscandic) 

Technically  
Speaking

**CEDARLANE**<sup>®</sup>   
[www.cedarlanelabs.com](http://www.cedarlanelabs.com)

Conveniently Delivering You Today's Innovations  
for the Science of Tomorrow™

**Anti-Human CD33  
Monoclonal Antibody**

Catalogue#	Format	Size	Concentration	Isotype Control
<b>CL7627AP</b>	Purified	200µg	1.0 mg/ml	CLCMG100
<b>CL7627B</b>	Biotin	100µg	0.1 mg/ml	CLCMG115
<b>CL7627F</b>	FITC	100µg	0.1 mg/ml	CLCMG101
<b>CL7627PE</b>	PE	50µg	0.1 mg/ml	CLCMG104
<b>CL7627AF4</b>	Alexa Fluor <sup>®</sup> 488	100 µg	0.1 mg/ml	N/A
<b>CL7627AF6</b>	Alexa Fluor <sup>®</sup> 647	100 µg	0.1 mg/ml	N/A
<b>CL7627AF7</b>	Alexa Fluor <sup>®</sup> 700	100 µg	0.1 mg/ml	N/A

Alexa Fluor<sup>®</sup> is a registered trademark of Life Technologies Corporation.

Isotype: Mouse IgG<sub>1</sub>

**DESCRIPTION:**

Cedarlane's anti-Human CD33 monoclonal antibody specifically binds human CD33. CD33 is a 67 kDa transmembrane glycoprotein expressed on myeloid cells (granulocyte and macrophage precursors in the bone marrow). CD33 is part of the siglec (sialic acid-binding Ig-related lectins) family and shares common structural features to CD22 and Sialoadhesin.

**PRESENTATION:**

**Purified:** Purified IgG buffered in PBS and 0.02% NaN<sub>3</sub>. (Purified from ascitic fluid via Protein G Chromatography). For maximum recovery of contents, spin down tube before use.

**Biotin, FITC, PE, AF488, AF647 and AF700:** Biotin/FITC/PE/AF488/AF647/AF700 conjugated IgG buffered in PBS, 0.02% NaN<sub>3</sub> and EIA grade BSA as a stabilizing protein to bring total protein concentration to 4-5 mg/ml.

**STORAGE/STABILITY:**

For all formats, store at 4°C. DO NOT FREEZE **PE, AF488, AF647 and AF700** conjugates. For long term storage (**Purified, Biotin, FITC**), aliquot and freeze unused portion at -20°C in volumes appropriate for single usage. Avoid freeze/thaw cycles.

**APPLICATION:**

This antibody is suitable for use in ELISA, Western Blot, Immunoprecipitation and Flow Cytometry.

Visit our website for your local distributor.

**CEDARLANE**<sup>®</sup> 

[www.cedarlanelabs.com](http://www.cedarlanelabs.com)

An ISO 9001:2000 and ISO 13485:2003  
registered company.

In CANADA: Toll Free: 1-800-268-5058

4410 Paletta Court, Burlington, ON L7L 5R2 ph: (289) 288-0001, fax: (289) 288-0020  
e-mail: [general@cedarlanelabs.com](mailto:general@cedarlanelabs.com)

In the USA: Toll Free: 1-800-721-1644

1210 Turrentine Street, Burlington, NC 27215 ph: (336) 513-5135, fax: (336) 513-5138  
e-mail: [service@cedarlanelabs.com](mailto:service@cedarlanelabs.com)

## **SPECIFICATIONS:**

Clone: CD33 1C7/1

### Hybridoma Production:

Immunization: Immunogen: CD33-Fc recombinant protein

Donor: BALB/c spleen

Fusion Partner: Sp2/0AG.14

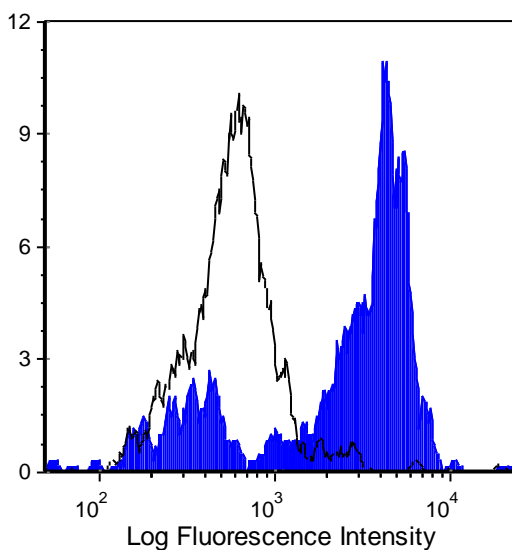
Specificity: This antibody is specific for human CD33.

## **TEST RESULTS:**

### Tissue Distribution by Flow Cytometry Analysis:

Cell Concentration:  $1 \times 10^6$  cells per test

Antibody Concentration Used:  $0.1 \mu\text{g}/10^6$  cells



Human peripheral blood monocytes were stained with anti-CD33 (clone: CD33 1C7/1) (filled histogram) or mouse IgG1 isotype control (open histogram).

**N.B. Appropriate control samples should always be included in any labeling studies.**

**\* For optimal results in various applications, it is recommended that each investigator determine dilutions appropriate for individual use.**

## **REFERENCES:**

1. Freeman SD, Kelm S, Barber EK, Crocker PR. Characterization of CD33 as a new member of the sialoadhesin family of cellular interaction molecules. *Blood*. 1995 Apr 15;85(8):2005-12.
2. Taylor VC, Buckley CD, Douglas M, Cody AJ, Simmons DL, Freeman SD. Myeloid-specific Sialic Acid-binding receptor, CD33, Associates with the Protein-tyrosine Phosphatases, SHP-1 and SHP-2. *J. Biol. Chem.* 1999. 274:11505-11512.
3. Paul SP, Taylor LS, Stansbury EK, McVicar DW. Myeloid specific human CD33 is an inhibitory receptor with differential ITIM function in recruiting the phosphatases SHP-1 and SHP-2. *Blood*. 2000 July 15. Volume 96 number 2.

**FOR RESEARCH USE ONLY**

® is a registered trademark of Cedarlane