



# SZABO SCANDIC

Part of Europa Biosite

## Produktinformation



Forschungsprodukte & Biochemikalien



Zellkultur & Verbrauchsmaterial



Diagnostik & molekulare Diagnostik



Laborgeräte & Service

Weitere Information auf den folgenden Seiten!  
See the following pages for more information!



### Lieferung & Zahlungsart

siehe unsere [Liefer- und Versandbedingungen](#)

### Zuschläge

- Mindermengenzuschlag
- Trockeneiszuschlag
- Gefahrgutzuschlag
- Expressversand

### SZABO-SCANDIC HandelsgmbH

Quellenstraße 110, A-1100 Wien

T. +43(0)1 489 3961-0

F. +43(0)1 489 3961-7

[mail@szabo-scandic.com](mailto:mail@szabo-scandic.com)

[www.szabo-scandic.com](http://www.szabo-scandic.com)

[linkedin.com/company/szaboscandic](https://www.linkedin.com/company/szaboscandic) 

# TECHNICALLY *Speaking*

Place your order with CEDARLANE® or your local distributor.

Please contact CEDARLANE® for lot specific information.

## Anti-Human RP105 (CD180) Monoclonal Antibody

Catalogue#	Format	Size	Concentration	Isotype Control
CL7630AP	Purified	200ug	1.0 mg/ml	CLCMG100
CL7630PE	PE	50ug	0.1 mg/ml	CLCMG104

Isotype: Mouse IgG1κ

### **DESCRIPTION:**

Cedarlane's anti-human RP105 (CD180, Bgp95), is a 95-105 kDa type 1 membrane protein that forms a cell surface receptor complex with a molecule called MD1 and is a member of the toll like receptor (TLR) family. The RP105/MD1 complex is a component of the innate immune system and in combination with TLR4 controls B cell recognition and signaling of LPS on gram negative bacteria.

RP105 is expressed mainly on mature peripheral B cells. This anti-body has been reported to work in Flow Cytometry.

### **PRESENTATION:**

**Purified:** Purified IgG buffered in PBS and 0.02% NaN<sub>3</sub>. (Purified from ascitic fluid via Protein G Chromatography).

**Biotin, FITC and PE:** Biotin/FITC/PE conjugated IgG buffered in PBS, 0.02% NaN<sub>3</sub> and EIA grade BSA as a stabilizing protein to bring total protein concentration to 4-5 mg/mL.

### **STORAGE/STABILITY:**

For all formats, store at 4°C. DO NOT FREEZE PE conjugates. For long term storage (**Purified, Biotin, FITC, No Azide**), aliquot and freeze unused portion at -20°C in volumes appropriate for single usage. Avoid freeze/thaw cycles.

*Continued overleaf...*

For more information or to place an order please contact...

**CEDARLANE®**  
**LABORATORIES LIMITED**



**toll free: 1-800-268-5058**  
**in North America**

phone: (905) 878-8891 • fax: (905) 878-7800

5516 - 8th Line, R.R.#2, Hornby, Ontario, CANADA L0P 1E0

or visit our website for a list of our international distributors including contact information  
website: [www.cedarlanelabs.com](http://www.cedarlanelabs.com) • e-mail: [info@cedarlanelabs.com](mailto:info@cedarlanelabs.com)

**SPECIFICATIONS:**

Clone: G28-8

Hybridoma Production:

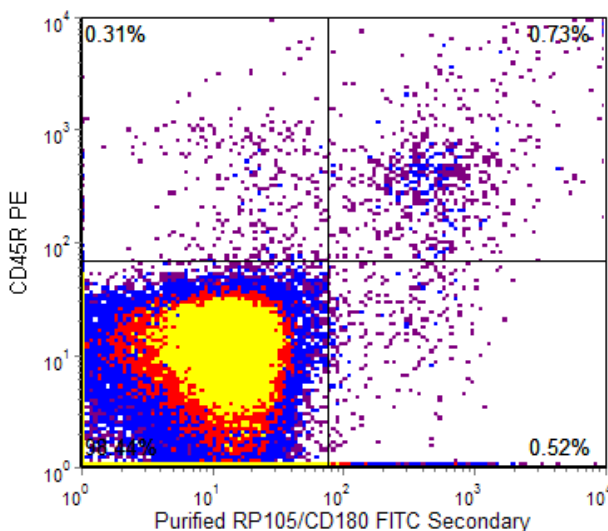
Immunization:  
Immunogen: Human RP105  
Donor: mouse ascites fluid

Specificity: Human RP105 (CD180)

**TEST RESULTS:**

Tissue Distribution by Flow Cytometry Analysis:

Cell Source: human peripheral blood leukocytes  
Cell Concentration :  $1 \times 10^6$  cells per tests  
Antibody Concentration Used:  $0.5 \mu\text{g}/10^6$  cells (For CL7630AP and CL8990PE)



2D Plot of leukocytes from human peripheral blood stained with Purified anti-human RP105/CD180 primary antibody (CL7630AP) (FITC secondary) and PE anti-CD45R B cell marker (CL8990PE)

**N.B. Appropriate control samples should always be included in any labeling studies.**  
**\* For optimal results in various applications, it is recommended that each investigator determine dilutions appropriate for individual use.**

**REFERENCES:**

1. Ogata, H. et al. 2000. The Toll-like Receptor Protein RP105 Regulates Lipopolysaccharide Signaling in B Cells. *The Journal of Experimental Medicine*. July 3, 192(1) 23-29.

**FOR RESEARCH USE ONLY**

® is a registered trademark of Cedarlane Laboratories Ltd.