



SZABO SCANDIC

Part of Europa Biosite

Produktinformation



Forschungsprodukte & Biochemikalien



Zellkultur & Verbrauchsmaterial



Diagnostik & molekulare Diagnostik



Laborgeräte & Service

Weitere Information auf den folgenden Seiten!
See the following pages for more information!



Lieferung & Zahlungsart

siehe unsere [Liefer- und Versandbedingungen](#)

Zuschläge

- Mindermengenzuschlag
- Trockeneiszuschlag
- Gefahrgutzuschlag
- Expressversand

SZABO-SCANDIC HandelsgmbH

Quellenstraße 110, A-1100 Wien

T. +43(0)1 489 3961-0

F. +43(0)1 489 3961-7

mail@szabo-scandic.com

www.szabo-scandic.com

[linkedin.com/company/szaboscandic](https://www.linkedin.com/company/szaboscandic) 

TECHNICALLY *Speaking*

Place your order with CEDARLANE® or your local distributor.
Please contact CEDARLANE® for lot specific information.

Anti-Human RP105 (CD180) Monoclonal Antibody

| Catalogue# | Format | Size | Concentration | Isotype Control |
|------------|----------|-------|---------------|-----------------|
| CL7630AP | Purified | 200ug | 1.0 mg/ml | CLCMG100 |
| CL7630PE | PE | 50ug | 0.1 mg/ml | CLCMG104 |

Isotype: Mouse IgG1κ

DESCRIPTION:

Cedarlane's anti-human RP105 (CD180, Bgp95), is a 95-105 kDa type 1 membrane protein that forms a cell surface receptor complex with a molecule called MD1 and is a member of the toll like receptor (TLR) family. The RP105/MD1 complex is a component of the innate immune system and in combination with TLR4 controls B cell recognition and signaling of LPS on gram negative bacteria.

RP105 is expressed mainly on mature peripheral B cells. This anti-body has been reported to work in Flow Cytometry.

PRESENTATION:

Purified: Purified IgG buffered in PBS and 0.02% NaN₃. (Purified from ascitic fluid via Protein G Chromatography).

Biotin, FITC and PE: Biotin/FITC/PE conjugated IgG buffered in PBS, 0.02% NaN₃ and EIA grade BSA as a stabilizing protein to bring total protein concentration to 4-5 mg/mL.

STORAGE/STABILITY:

For all formats, store at 4°C. DO NOT FREEZE PE conjugates. For long term storage (**Purified, Biotin, FITC, No Azide**), aliquot and freeze unused portion at -20°C in volumes appropriate for single usage. Avoid freeze/thaw cycles.

Continued overleaf...

For more information or to place an order please contact...

CEDARLANE®
LABORATORIES LIMITED



toll free: 1-800-268-5058
in North America

phone: (905) 878-8891 • fax: (905) 878-7800

5516 - 8th Line, R.R.#2, Hornby, Ontario, CANADA L0P 1E0

or visit our website for a list of our international distributors including contact information
website: www.cedarlanelabs.com • e-mail: info@cedarlanelabs.com

SPECIFICATIONS:

Clone: G28-8

Hybridoma Production:

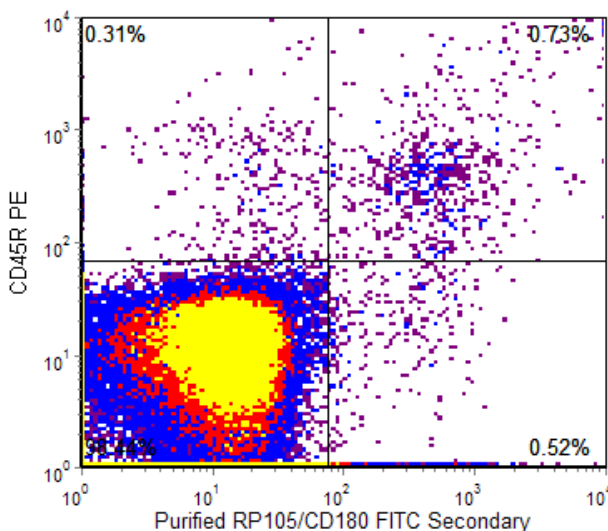
Immunization:
Immunogen: Human RP105
Donor: mouse ascites fluid

Specificity: Human RP105 (CD180)

TEST RESULTS:

Tissue Distribution by Flow Cytometry Analysis:

Cell Source: human peripheral blood leukocytes
Cell Concentration : 1×10^6 cells per tests
Antibody Concentration Used: $0.5 \mu\text{g}/10^6$ cells (For CL7630AP and CL8990PE)



2D Plot of leukocytes from human peripheral blood stained with Purified anti-human RP105/CD180 primary antibody (CL7630AP) (FITC secondary) and PE anti-CD45R B cell marker (CL8990PE)

N.B. Appropriate control samples should always be included in any labeling studies.
*** For optimal results in various applications, it is recommended that each investigator determine dilutions appropriate for individual use.**

REFERENCES:

1. Ogata, H. et al. 2000. The Toll-like Receptor Protein RP105 Regulates Lipopolysaccharide Signaling in B Cells. *The Journal of Experimental Medicine*. July 3, 192(1) 23-29.

FOR RESEARCH USE ONLY

® is a registered trademark of Cedarlane Laboratories Ltd.