



# SZABO SCANDIC

Part of Europa Biosite

## Produktinformation



Forschungsprodukte & Biochemikalien



Zellkultur & Verbrauchsmaterial



Diagnostik & molekulare Diagnostik



Laborgeräte & Service

Weitere Information auf den folgenden Seiten!  
See the following pages for more information!



### Lieferung & Zahlungsart

siehe unsere [Liefer- und Versandbedingungen](#)

### Zuschläge

- Mindermengenzuschlag
- Trockeneiszuschlag
- Gefahrgutzuschlag
- Expressversand

### SZABO-SCANDIC HandelsgmbH

Quellenstraße 110, A-1100 Wien

T. +43(0)1 489 3961-0

F. +43(0)1 489 3961-7

[mail@szabo-scandic.com](mailto:mail@szabo-scandic.com)

[www.szabo-scandic.com](http://www.szabo-scandic.com)

[linkedin.com/company/szaboscandic](https://www.linkedin.com/company/szaboscandic) 

Technically  
Speaking

**CEDARLANE**<sup>®</sup>  
[www.cedarlanelabs.com](http://www.cedarlanelabs.com)



Conveniently Delivering You Today's Innovations  
for the Science of Tomorrow™

**Anti-Human/Mouse Complement Component C3  
Monoclonal Antibody**

Catalogue#	Format	Size	Concentration	Isotype Control
<b>CL7631AP</b>	Purified	250ug	1.0 mg/ml	CLCMG100
<b>CL7631APC</b>	APC	100ug	0.1mg/ml	CLCMG105
<b>CL7631B</b>	Biotin	100ug	0.1 mg/ml	CLCMG115
<b>CL7631F</b>	FITC	100ug	0.1 mg/ml	CLCMG101
<b>CL7631PE</b>	PE	50ug	0.1 mg/ml	CLCMG104

Isotype: Mouse IgG1

**DESCRIPTION:**

Cedarlane's Purified Anti-Human/Mouse Complement Component C3 monoclonal antibody (Clone: 6C9) reacts with human and mouse C3 as well as the breakdown products C3b and iC3b. C3 is the most abundant complement protein in serum. C3 and its cleavage products, C3a and C3b, play a central role in the complement activation cascade. C3b forms an integral part of the C3 and C5 convertases as it promotes complement activation and the subsequent formation of the membrane attack complex. C3a possesses anaphylatoxic as well as various immunoregulatory properties.

Also, C3 has been implicated in developmental and non-inflammatory process such as hematopoiesis, skeletal and vascular development and reproduction.

Reported applications of this antibody include flow cytometry and ELISA.

**PRESENTATION:**

**Purified:** Purified IgG buffered in PBS and 0.02% NaN<sub>3</sub>. (Purified from ascitic fluid via Protein G Chromatography). For maximum recovery of contents, spin down tube before use.

**APC, Biotin, FITC and PE:** APC/Biotin/FITC/PE conjugated IgG buffered in PBS, 0.02% NaN<sub>3</sub> and EIA grade BSA as a stabilizing protein to bring total protein concentration to 4-5 mg/ml.

**STORAGE/STABILITY:**

For all formats, store at 4°C. DO NOT FREEZE **APC, PE** conjugates. For long term storage (**Purified, Biotin** and **FITC**), aliquot and freeze unused portion at -20°C in volumes appropriate for single usage. Avoid freeze/thaw cycles.

Visit our website for your local distributor.

**CEDARLANE**<sup>®</sup>



[www.cedarlanelabs.com](http://www.cedarlanelabs.com)

An ISO 9001:2000 and ISO 13485:2003  
registered company.

In CANADA: **Toll Free: 1-800-268-5058**

4410 Paletta Court, Burlington, ON L7L 5R2 ph: (289) 288-0001, fax: (289) 288-0020  
e-mail: [general@cedarlanelabs.com](mailto:general@cedarlanelabs.com)

In the USA: **Toll Free: 1-800-721-1644**

1210 Turrentine Street, Burlington, NC 27215 ph: (336) 513-5135, fax: (336) 513-5138  
e-mail: [service@cedarlanelabs.com](mailto:service@cedarlanelabs.com)

## **SPECIFICATIONS:**

Clone: 6C9

### Hybridoma Production:

Immunization:

Immunogen: human C3

Donor: C3 kko Mouse spleen cells

Fusion Partner: Sp2/0-Ag14 cells

Specificity: Human and Mouse Complement Component C3

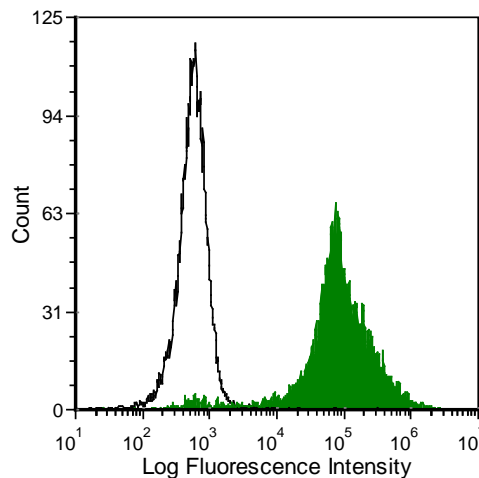
## **TEST RESULTS:**

Mouse Strain: C57Bl/6

Cell Concentration:  $1 \times 10^6$  cells per test

Antibody Concentration Used:  $0.5 \mu\text{g}/10^6$  cells

Percentage of cells stained above control: 97 %



C57BL/6 mouse thymocytes incubated with rabbit anti-mouse T cells and then incubated with fresh human serum were stained with anti-C3/C3b/iC3b (clone: 6C9) (filled histogram) or mouse IgG1 isotype control (open histogram).

**N.B. Appropriate control samples should always be included in any labeling studies.**

**\* For optimal results in various applications, it is recommended that each investigator determine dilutions appropriate for individual use.**

## **REFERENCES:**

1. Kremmer E, Thierfelder S, Felber E, et al. (1990) **Monoclonal antibodies to complement components without the need of their prior purification. II. Antibodies to mouse C3 and C4.** Hybridoma. 9(4):309-17.
2. Cortes C, Ferreira VP, Pangburn MK. (2011) **Native properdin binds to Chlamydia pneumoniae and promotes complement activation.** Infect Immun. 79(2):724-31.
3. Fridkis-Hareli M, Storek M, Mazsaroff I, et al. (2011) **Design and development of TT30, a novel C3d-targeted C3/C5 convertase inhibitor for treatment of human complement alternative pathway-mediated diseases.** Blood. 118(17):4705-13.
4. Cortes C, Ferreira VP, Pangburn MK. (2011) **Native properdin binds to Chlamydia pneumoniae and promotes complement activation.** Infect Immun. 79(2):724-31.
5. Fridkis-Hareli M, Storek M, Mazsaroff I et al. (2011) **Design and development of TT30, a novel C3d-targeted C3/C5 convertase inhibitor for treatment of human complement alternative pathway-mediated diseases.** Blood. 118(17):4705-13.

**FOR RESEARCH USE ONLY**  
® is a Registered Trademark of Cedarlane