



SZABO SCANDIC

Part of Europa Biosite

Produktinformation



Forschungsprodukte & Biochemikalien



Zellkultur & Verbrauchsmaterial



Diagnostik & molekulare Diagnostik



Laborgeräte & Service

Weitere Information auf den folgenden Seiten!
See the following pages for more information!



Lieferung & Zahlungsart

siehe unsere [Liefer- und Versandbedingungen](#)

Zuschläge

- Mindermengenzuschlag
- Trockeneiszuschlag
- Gefahrgutzuschlag
- Expressversand

SZABO-SCANDIC HandelsgmbH

Quellenstraße 110, A-1100 Wien

T. +43(0)1 489 3961-0

F. +43(0)1 489 3961-7

mail@szabo-scandic.com

www.szabo-scandic.com

[linkedin.com/company/szaboscandic](https://www.linkedin.com/company/szaboscandic) 

Technically
Speaking

CEDARLANE[®] 
www.cedarlanelabs.com

Conveniently Delivering You Today's Innovations
for the Science of Tomorrow™

**Anti-Human/Mouse Complement Component C3/C3b/iC3b
Monoclonal Antibody**

Catalogue#	Format	Size	Concentration	Isotype Control
CL7632AP	Purified	250µg	1.0 mg/ml	CLCMG100
CL7632B	Biotin	100µg	0.1 mg/ml	CLCMG115
CL7632F	FITC	100µg	0.1 mg/ml	CLCMG101
CL7632PE	PE	50µg	0.1 mg/ml	CLCMG104
CL7632NA	Purified	1mg	1mg/ml	CLCMG100

Isotype: Mouse IgG1

DESCRIPTION:

Cedarlane's Purified Anti-Human/Mouse Complement Component C3 monoclonal antibody (Clone: 10C7) reacts with human and mouse C3 as well as the breakdown products C3b and iC3b. C3 is the most abundant complement protein in serum. C3 and its cleavage products, C3a and C3b, play a central role in the complement activation cascade. C3b forms an integral part of the C3 and C5 convertases as it promotes complement activation and the subsequent formation of the membrane attack complex. C3a possesses anaphylatoxic as well as various immunoregulatory properties.

Also, C3 has been implicated in developmental and non-inflammatory process such as hematopoiesis, skeletal and vascular development and reproduction.

Reported applications of this antibody include flow cytometry and ELISA.

PRESENTATION:

Purified: Purified IgG buffered in PBS and 0.02% NaN₃. (Purified from ascitic fluid via Protein G Chromatography). For maximum recovery of contents, spin down tube before use.

No Azide: Purified Ig buffered in PBS, no preservative, 0.2µm sterile filtered.

Biotin, FITC and PE: Biotin/FITC/PE conjugated IgG buffered in PBS, 0.02% NaN₃ and EIA grade BSA as a stabilizing protein to bring total protein concentration to 4-5 mg/ml.

STORAGE/STABILITY:

For all formats, store at +4°C. DO NOT FREEZE PE conjugates. For long term storage (**Purified, Biotin, FITC**, aliquot and freeze unused portion at -20°C in volumes appropriate for single usage. Avoid freeze/thaw cycles.

Visit our website for your local distributor.

CEDARLANE[®] 

www.cedarlanelabs.com

An ISO 9001:2000 and ISO 13485:2003
registered company.

In CANADA: Toll Free: 1-800-268-5058

4410 Paletta Court, Burlington, ON L7L 5R2 ph: (289) 288-0001, fax: (289) 288-0020
e-mail: general@cedarlanelabs.com

In the USA: Toll Free: 1-800-721-1644

1210 Turrentine Street, Burlington, NC 27215 ph: (336) 513-5135, fax: (336) 513-5138
e-mail: service@cedarlanelabs.com

SPECIFICATIONS:

Clone: 10C7

Hybridoma Production:

Immunization:

Immunogen: C57BL/6 thymocytes incubated with a rat IgG2b anti-murine Thy-1 (RmT1) and C57BL/6 serum (as a source for C3)

Donor: Mouse spleen cells

Fusion Partner: Mouse myeloma cell line P3X63 Ag. 8.653

Specificity: Human and Mouse Complement Component C3

TEST RESULTS:

Tissue Distribution by Flow Cytometry Analysis:

Mouse Strain: C57BL/6

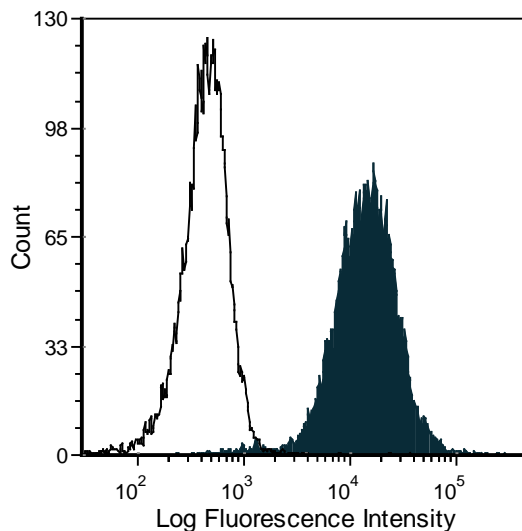
Cell Concentration: 1×10^6 cells per test

Antibody Concentration Used: $1.0 \mu\text{g}/10^6$ cells

Cell Source

Mouse thymocytes incubated with Rabbit Anti-Mouse T cells (CL2001), then incubated with fresh human serum and stained as indicated above.

Percentage of cells stained above control: 98%



C57BL/6 mouse thymocytes incubated with rabbit anti-mouse T cells and then incubated with fresh human serum were stained with anti-C3/C3b/iC3b (clone: 10C7) (filled histogram) or mouse IgG1 isotype control (open histogram).

N.B. Appropriate control samples should always be included in any labeling studies.

*** For optimal results in various applications, it is recommended that each investigator determine dilutions appropriate for individual use.**

REFERENCES:

1. Whipple EC, Ditto AH, Shanahan RS, et al. (2007) **Low doses of antigen coupled to anti-CR2 mAbs induce rapid and enduring IgG immune responses in mice and in cynomolgus monkeys.** Mol Immunol. 44(4):377-88.

FOR RESEARCH USE ONLY
® is a Registered Trademark of Cedarlane