



# SZABO SCANDIC

Part of Europa Biosite

## Produktinformation



Forschungsprodukte & Biochemikalien



Zellkultur & Verbrauchsmaterial



Diagnostik & molekulare Diagnostik



Laborgeräte & Service

Weitere Information auf den folgenden Seiten!  
See the following pages for more information!



### Lieferung & Zahlungsart

siehe unsere [Liefer- und Versandbedingungen](#)

### Zuschläge

- Mindermengenzuschlag
- Trockeneiszuschlag
- Gefahrgutzuschlag
- Expressversand

### SZABO-SCANDIC HandelsgmbH

Quellenstraße 110, A-1100 Wien

T. +43(0)1 489 3961-0

F. +43(0)1 489 3961-7

[mail@szabo-scandic.com](mailto:mail@szabo-scandic.com)

[www.szabo-scandic.com](http://www.szabo-scandic.com)

[linkedin.com/company/szaboscandic](https://www.linkedin.com/company/szaboscandic) 

Technically  
Speaking

**CEDARLANE**<sup>®</sup>  
[www.cedarlanelabs.com](http://www.cedarlanelabs.com)



Conveniently Delivering You Today's Innovations  
for the Science of Tomorrow™

**Rabbit Anti-Human Complement Component C1q  
Polyclonal Antibody**

Catalogue#	Format	Size	Concentration
CL7633AP	Purified	200 µg	1.0 mg/ml
CL7633B	Biotin	100 µg	0.1 mg/ml
CL7633HP	HRPO	100 µg	1.0 mg/ml

Isotype: Rabbit IgG

**DESCRIPTION:**

C1q is part of the C1 complex (C1q<sub>2</sub>S<sub>2</sub>) and is the first component of the classical complement pathway. C1q is a glycoprotein with a molecular weight of 410kDa. It has six extended arms with globular domains at the end of each arm that bind to the Fc regions of IgG and IgM. Binding of C1q to surface bound Immunoglobulins triggers activation of the classical complement pathway which ultimately leads to clearance of invading organisms.

C1q deficiency has a profound effect on host defense and has been associated with the development of systemic lupus erythematosus (SLE).

**PRESENTATION:**

**Purified:** Purified IgG buffered in PBS and 0.02% NaN<sub>3</sub>. (Purified from serum via Affinity Chromatography). For maximum recovery of contents, spin down tube before use.

**Biotin:** Biotin conjugated IgG buffered in PBS, 0.02% NaN<sub>3</sub> and EIA grade BSA as a stabilizing protein to bring total protein concentration to 4-5 mg/ml.

**HRPO:** HRPO conjugated IgG buffered in PBS with 40% glycerol (v/v) and EIA grade BSA as a stabilizing protein to bring total protein concentration to 4-5 mg/ml. No NaN<sub>3</sub> with other preservatives.

**STORAGE/STABILITY:**

For all formats, store at + 4°C. For long term storage, aliquot and freeze unused portion at -20°C in volumes appropriate for single usage. Avoid freeze/thaw cycles.

**APPLICATION:**

This antibody is suitable for use in ELISA and Western Blot at minimum working dilutions of 1:8000 and 1:250 respectively and also Flow Cytometry. This antibody has not been tested in other applications.

*Continued Overleaf....*

Visit our website for your local distributor.

**CEDARLANE**<sup>®</sup>



[www.cedarlanelabs.com](http://www.cedarlanelabs.com)

An ISO 9001:2015 and ISO 13485:2016  
registered company.

In CANADA: **Toll Free: 1-800-268-5058**

4410 Paletta Court, Burlington, ON L7L 5R2 ph: (289) 288-0001, fax: (289) 288-0020  
e-mail: [general@cedarlanelabs.com](mailto:general@cedarlanelabs.com)

In the USA: **Toll Free: 1-800-721-1644**

1210 Turrentine Street, Burlington, NC 27215 ph: (336) 513-5135, fax: (336) 513-5138  
e-mail: [service@cedarlanelabs.com](mailto:service@cedarlanelabs.com)

## **SPECIFICATION:**

**Immunogen:** Native human complement component C1q.

**Specificity:** This antibody is specific for human C1q

## **TEST RESULTS:**

**Tissue Distribution by Flow Cytometry Analysis:**

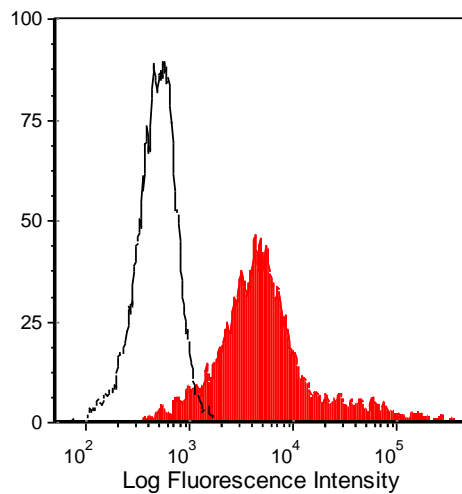
Mouse Strain: Balb/c

Cell Concentration:  $1 \times 10^6$  cells per tests

Antibody Concentration Used:  $1.0 \mu\text{g}/10^6$  cells

### **Cell Source:**

Mouse thymocytes coated with complement binding antibody (CL8600AP – Purified Anti-Mouse CD90 (Thy 1.2) mAb) and incubated with fresh human sera containing 5 mM EDTA.



Balb/c mouse thymocytes incubated with anti-mouse CD90 (Thy 1.2) (clone: 5a-8) + fresh human serum + 5 mM EDTA were stained with anti-C1q (polyclonal) (filled histogram) or rabbit IgG (open histogram).

**N.B. Appropriate control samples should always be included in any labeling studies.**

**\*For optimal results in various applications, it is recommended that each investigator determine dilutions appropriate for individual use.**

## **REFERENCES:**

1. Klickstein LB., Barbashov SF., Liu T., Jack RM., and Weller AN. 1997. Complement Receptor Type1 (CR1, CD35) is a receptor for C1q. *Immunity*. **7**: 345-355.
2. Eggleton.P., Tenner AJ., and Reid KBM. 2000. C1q receptors. *Clin Exp Immunol*. **120**: 406-412.

**FOR RESEARCH USE ONLY**

® is a registered trademark of Cedarlane