



# SZABO SCANDIC

Part of Europa Biosite

## Produktinformation



Forschungsprodukte & Biochemikalien



Zellkultur & Verbrauchsmaterial



Diagnostik & molekulare Diagnostik



Laborgeräte & Service

Weitere Information auf den folgenden Seiten!  
See the following pages for more information!



### Lieferung & Zahlungsart

siehe unsere [Liefer- und Versandbedingungen](#)

### Zuschläge

- Mindermengenzuschlag
- Trockeneiszuschlag
- Gefahrgutzuschlag
- Expressversand

### SZABO-SCANDIC HandelsgmbH

Quellenstraße 110, A-1100 Wien

T. +43(0)1 489 3961-0

F. +43(0)1 489 3961-7

[mail@szabo-scandic.com](mailto:mail@szabo-scandic.com)

[www.szabo-scandic.com](http://www.szabo-scandic.com)

[linkedin.com/company/szaboscandic](https://www.linkedin.com/company/szaboscandic) 

Technically  
Speaking

**CEDARLANE**<sup>®</sup>   
[www.cedarlanelabs.com](http://www.cedarlanelabs.com)

Conveniently Delivering You Today's Innovations  
for the Science of Tomorrow™

**Anti-Human C3/C3b/iC3b  
Monoclonal Antibody**

Catalogue#	Format	Size	Concentration	Isotype Control
<b>CL7636AP</b>	Purified	250µg	1.0 mg/ml	CLCMG100
<b>CL7636B</b>	Biotin	100µg	0.1 mg/ml	CLCMG115
<b>CL7636F</b>	FITC	100µg	0.1 mg/ml	CLCMG101
<b>CL7636PE</b>	PE	50µg	0.1 mg/ml	CLCMG104

Isotype: Mouse IgG<sub>1</sub>

**DESCRIPTION:**

Cedarlane's anti-Human C3/C3b/iC3b monoclonal antibody specifically binds human C3 as well as the breakdown products C3b and iC3b. C3 is the most abundant complement protein in serum. C3 and its cleavage products, C3a and C3b, play a central role in the complement activation cascade. C3b forms an integral part of the C3 and C5 convertases as it promotes complement activation and the subsequent formation of the membrane attack complex. C3a possesses anaphylatoxic as well as various immunoregulatory properties.

Also, C3 has been implicated in developmental and non-inflammatory process such as hematopoiesis, skeletal and vascular development and reproduction.

Cedarlane's CL7637 (clone: 1H8) and CL7636 (clone: 7C12) recognize separate, non-overlapping epitopes on C3 fragments. Clone 7C12 is suitable for use in Flow Cytometry and ELISA.

**PRESENTATION:**

**Purified:** Purified IgG buffered in PBS and 0.02% NaN<sub>3</sub>. (Purified from ascitic fluid via Protein G Chromatography). For maximum recovery of contents, spin down tube before use.

**Biotin, FITC, and PE:** Biotin/FITC/PE conjugated IgG buffered in PBS, 0.02% NaN<sub>3</sub> and EIA grade BSA as a stabilizing protein to bring total protein concentration to 4-5 mg/ml.

**STORAGE/STABILITY:**

For all formats, store at 4°C. DO NOT FREEZE PE conjugate. For long term storage (**Purified, Biotin, FITC**), aliquot and freeze unused portion at -20°C in volumes appropriate for single usage. Avoid freeze/thaw cycles.

Visit our website for your local distributor.

**CEDARLANE**<sup>®</sup> 

[www.cedarlanelabs.com](http://www.cedarlanelabs.com)

An ISO 9001:2000 and ISO 13485:2003  
registered company.

In CANADA: Toll Free: 1-800-268-5058

4410 Paletta Court, Burlington, ON L7L 5R2 ph: (289) 288-0001, fax: (289) 288-0020  
e-mail: [general@cedarlanelabs.com](mailto:general@cedarlanelabs.com)

In the USA: Toll Free: 1-800-721-1644

1210 Turrentine Street, Burlington, NC 27215 ph: (336) 513-5135, fax: (336) 513-5138  
e-mail: [service@cedarlanelabs.com](mailto:service@cedarlanelabs.com)

## **SPECIFICATIONS:**

Clone: 7C12

### Hybridoma Production:

Immunization:

Immunogen: Human C3b(i) coupled to sepharose 4B.

Donor: BALB/c mice

Fusion Partner: Mouse myeloma cell line Sp2/0-Ag 14

Specificity: This antibody is specific for human C3/C3b/iC3b.

## **TEST RESULTS:**

Tissue Distribution by Flow Cytometry Analysis:

Cell Concentration:  $1 \times 10^6$  cells per tests

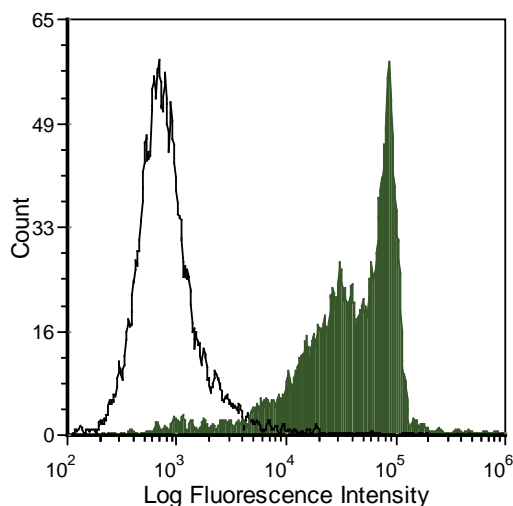
Antibody Concentration Used:  $0.1 \mu\text{g}/10^6$  cells

Cell Source:

Balb/c thymus (activated with anti-Mouse T-Cells and Human Serum)

Percentage of cells stained above control:

90.42%



Balb/c mouse thymocytes incubated with rabbit anti-mouse T cells and then incubated with fresh human serum were stained with anti-C3/C3b/iC3b (clone: 7C12) (filled histogram) or mouse IgG1 isotype control (open histogram).

**N.B. Appropriate control samples should always be included in any labeling studies.**

**\* For optimal results in various applications, it is recommended that each investigator determine dilutions appropriate for individual use.**

## **REFERENCES:**

1. Kennedy AD, Solga MD, Schuman TA, Chi AW, Lindorfer MA, Sutherland WM, Foley PL, Taylor RP. An anti-C3b(i) mAb enhances complement activation, C3b(i) deposition, and killing of CD20+ cells by rituximab. *Blood*. 2003 Feb 1;101(3):1071-9.
2. Beurskens FJ, Lindorfer MA, Farooqui M, Beum PV, Engelberts P, Mackus WJ, Parren P, Wiestner A, Taylor RP. Exhaustion of Cytotoxic Effector Systems May Limit Monoclonal Antibody-Based Immunotherapy in Cancer Patients. *J Immunol*. 2012 Apr 1;188(7):3532-41.
3. Kennedy AD, Beum PV, Solga MD, DiLillo DJ, Lindorfer MA, Hess CE, Densmore JJ, Williams ME, Taylor RP. Rituximab infusion promotes rapid complement depletion and acute CD20 loss in chronic lymphocytic leukemia. *J Immunol*. 2004 Mar 1;172(5):3280-8.
4. Lindorfer MA, Pawluczko AW, Peek EM, Hickman K, Taylor RP, Parker CJ. A novel approach to preventing the hemolysis of paroxysmal nocturnal hemoglobinuria: both complement-mediated cytolysis and C3 deposition are blocked by a monoclonal antibody specific for the alternative pathway of complement. *Blood*. 2010 Mar 18;115(11):2283-91.
5. Totic L, Sutherland WM, Kurek J, Edberg JC, Taylor RP. Preparation of monoclonal antibodies to C3b by immunization with C3b(i)-sepharose. *J Immunol Methods*. 1989 Jun 21;120(2):241-9.

**FOR RESEARCH USE ONLY**

® is a registered trademark of Cedarlane