



SZABO SCANDIC

Part of Europa Biosite

Produktinformation



Forschungsprodukte & Biochemikalien



Zellkultur & Verbrauchsmaterial



Diagnostik & molekulare Diagnostik



Laborgeräte & Service

Weitere Information auf den folgenden Seiten!
See the following pages for more information!



Lieferung & Zahlungsart

siehe unsere [Liefer- und Versandbedingungen](#)

Zuschläge

- Mindermengenzuschlag
- Trockeneiszuschlag
- Gefahrgutzuschlag
- Expressversand

SZABO-SCANDIC HandelsgmbH

Quellenstraße 110, A-1100 Wien

T. +43(0)1 489 3961-0

F. +43(0)1 489 3961-7

mail@szabo-scandic.com

www.szabo-scandic.com

[linkedin.com/company/szaboscandic](https://www.linkedin.com/company/szaboscandic) 

Technically
Speaking

CEDARLANE[®]
www.cedarlanelabs.com



Conveniently Delivering You Today's Innovations
for the Science of Tomorrow™

**Anti-Human CD200
Monoclonal Antibody**

| Catalogue# | Format | Size | Concentration | Isotype Control |
|------------|------------------------------|--------|---------------|-----------------|
| CL7669AP | Purified | 250 µg | 1.0 mg/ml | CLCR2A00 |
| CL7669LE | Low Endotoxin | 500 µg | 1.0 mg/ml | CLCR2A00 |
| CL7669B | Biotin | 100 µg | 0.1 mg/ml | CLCR2A00 |
| CL7669F | FITC | 100 µg | 0.1 mg/ml | CLCR2A01 |
| CL7669PE | PE | 50 µg | 0.1 mg/ml | CLCR2A04 |
| CL7669APC | APC | 100 µg | 0.1 mg/ml | CLCR2A05 |
| CL7669AF4 | Alexa Fluor [®] 488 | 100 µg | 0.1 mg/ml | N/A |
| CL7669AF6 | Alexa Fluor [®] 647 | 100 µg | 0.1 mg/ml | N/A |

Alexa Fluor[®] is a registered trademark of Life Technologies Corporation.

Isotype: Rat IgG_{2a}

DESCRIPTION:

CD200, also known as OX-2, is a type-1 membrane glycoprotein that belongs to the immunoglobulin superfamily (IgSF). It's expressed on several tissues including thymocytes, neurons, endothelium, follicular dendritic cells in all lymphoid organs, a subset of CD34+ progenitor cells, and at low levels on some smooth muscle and B lymphocytes. CD200 is not expressed on NK cells, monocytes, granulocytes, or platelets.

CD200 co-stimulates T-cell proliferation and may regulate myeloid cell activity in a variety of tissues. Additionally, interaction of CD200 with its receptor on macrophages induces a downregulation of macrophage activity in a variety of tissues, suggesting a regulatory function.

PRESENTATION:

Purified: Purified IgG buffered in PBS and 0.02% NaN₃. (Purified via Protein G Chromatography). For maximum recovery of contents, spin down tube before use.

LE: Purified Ig buffered in PBS, no preservative, 0.2µm sterile filtered. (Purified from cell culture supernatant via Protein G Chromatography)

Biotin, FITC, PE, APC AF488 and AF647: Biotin/FITC/PE/APC/AF488/AF647 conjugated IgG buffered in PBS, 0.02% NaN₃ and EIA grade BSA as a stabilizing protein to bring total protein concentration to 4-5 mg/ml.

STORAGE/STABILITY:

For all formats, store at 4°C. DO NOT FREEZE APC, PE, AF488 and AF647 conjugates. For long term storage (**Purified, LE, Biotin and FITC**), aliquot and freeze unused portion at -20°C in volumes appropriate for single usage. Avoid freeze/thaw cycles.

Continued Overleaf.....

Visit our website for your local distributor.

CEDARLANE[®]



www.cedarlanelabs.com

An ISO 9001:2000 and ISO 13485:2003
registered company.

In CANADA: Toll Free: 1-800-268-5058

4410 Paletta Court, Burlington, ON L7L 5R2 ph: (289) 288-0001, fax: (289) 288-0020
e-mail: general@cedarlanelabs.com

In the USA: Toll Free: 1-800-721-1644

1210 Turrentine Street, Burlington, NC 27215 ph: (336) 513-5135, fax: (336) 513-5138
e-mail: service@cedarlanelabs.com

SPECIFICATIONS:

Clone: 1B9

Immunogen: Human CD200-Fc fusion protein.

Specificity: This antibody is specific for human CD200.

TEST RESULTS:

Tissue Distribution by Flow Cytometry Analysis:

Cell Concentration: 1×10^6 cells per tests

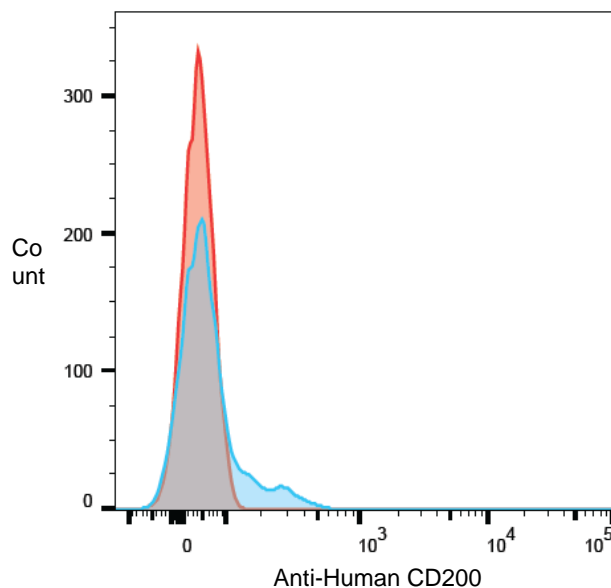
Antibody Concentration Used: $0.1 \mu\text{g}/10^6$ cells

Cell Source:

Human PBLs

Percentage of cells stained above control:

16.4 %



Human peripheral blood lymphocytes were stained with anti-CD200 (clone: 1B9) (blue histogram) or Rat IgG2a isotype control (red histogram).

N.B. Appropriate control samples should always be included in any labeling studies.

*** For optimal results in various applications, it is recommended that each investigator determine dilutions appropriate for individual use.**

REFERENCES:

1. Chen DX, Gorczynski RM. (2005) Discrete monoclonal antibodies define functionally important epitopes in the CD200 molecule responsible for immunosuppression function. *Transplantation*. 79(3):282-8.
2. Pallasch CP, et al. (2009) Disruption of T cell suppression in chronic lymphocytic leukemia by CD200 blockade. *Leuk Res*. 33(3):460-4.
3. Wong KK, et al. (2010) The role of CD200 in immunity to B cell lymphoma. *J Leukoc Biol*. 88(2):361-72.
4. Wong KK, et al. (2012) Soluble CD200 is critical to engraft chronic lymphocytic leukemia cells in immunocompromised mice. *Cancer Res*. 72(19):4931-43.
5. Wong KK, et al. (2016) Characterization of CD200 Ectodomain Shedding. *PLoS One*. 11(4):e0152073.
6. Gorczynski RM, Zhu F. (2017) Checkpoint blockade in solid tumors and B-cell malignancies, with special consideration of the role of CD200. *Cancer Manag Res*. 9:601-609.
7. Zhu F, et al. (2018) An autologous tumor vaccine for CLL. *Leuk Res*. 68:40-47.
8. Chen Z, et al. (2018) Cell membrane-bound CD200 signals both via an extracellular domain and following nuclear translocation of a cytoplasmic fragment. *Leuk Res*. 69:72-80.

FOR RESEARCH USE ONLY

® is a registered trademark of Cedarlane